

# POP<sup>®</sup> Rivet Tool Manual

## Rivet Presenter Operator's Manual

# Introduction

Thank you for choosing the Emhart Teknologies Rivet Presenter.

The Rivet Presenter increases productivity by delivering a rivet from a bulk reservoir directly to the nose of your POP® Rivetool freeing one hand to hold and position the work piece.

Models	Rivet Size	Max. Length
RP4	1/8" (3.2mm) diameter rivets	46
RP4-E	1/8" (3.2mm) diameter rivets	46
RP5	5/32" (4mm) diameter rivets	56
RP5-E	5/32" (4mm) diameter rivets	56
RP6	3/16" (4.8mm) diameter rivets	66
RP6-E	3/16" (4.8mm) diameter rivets	66

Rivet Presenters must be used with a POP® Rivetool equipped with a vacuum Mandrel Collection System.

# Specifications

Overall Size . . . . . 13 ¼" (337mm) High  
21 ¾" (553mm) Long  
8 ¾" (223mm) Wide

Empty Weight . . . . . Approx. 23lbs (~10.5 Kg)

Electrical Requirements – RP4, RP5, RP6 . . . 110VAC, 50-60 Hz, 0.5 Amp  
RP4-E, RP5-E, RP6-E. . . .240VAC, 50-60 Hz, 0.25 Amp

Air Supply Requirements . . . . . 70-90 PSI (4.8-6.1 Bar) dry, filtered

Approximate Rivet Capacity . . . . . RP4, RP4-E ~ 1000 rivets  
RP5, RP5-E ~ 800 rivets  
RP6, RP6-E ~ 600 rivets

## Receptacle Choices

Tool	Receptacle Part No.	Use for These Rivets
MCS510	RP4-486	1/8" (3.2mm), 5/32" (4mm)
MCS5201	RP4-486	1/8" (3.2mm), 5/32" (4mm)
MCS1500	RP4-486	1/8" (3.2mm), 5/32" (4mm)
MCS510	RP6-486	3/16" (4.8mm)
MCS5201	RP6-486	3/16" (4.8mm)
MCS5200	RP4-501	1/8" (3.2mm), 5/32" (4mm)
MCS540	RP4-501	1/8" (3.2mm), 5/32" (4mm)
MCS5200	RP6-501	3/16" (4.8mm)
MCS540	RP6-501	3/16" (4.8mm)
MCS5400	RP6-110	3/16" (4.8mm)

## Safety Instructions

**TO INSURE PROPER FUNCTIONING AND SAFE OPERATION READ THIS MANUAL CAREFULLY BEFORE SETTING UP OR OPERATING THE RIVET PRESENTER UNIT**

### **DO**

Always wear eye protection.

Operate this system in a Clean, Dry environment.

Use Caution when connecting or disconnecting  
Air and Electrical power.

Keep hair and fingers away from rivet loading area.

Disconnect Air and Electric power before  
servicing or relocating the unit.

Use only extension cords rated for operating  
current.

### **DO NOT**

Do Not operate this unit outdoors.

Do Not wear loose clothing or jewelry  
that may get caught in moving parts.

Do Not attempt to move the unit by  
pulling on air or electric lines.

Do Not remove any covers or operate  
the unit with any covers removed.

Do Not put fingers or objects other  
than POP tool Nose Housing into the  
Receptacle.

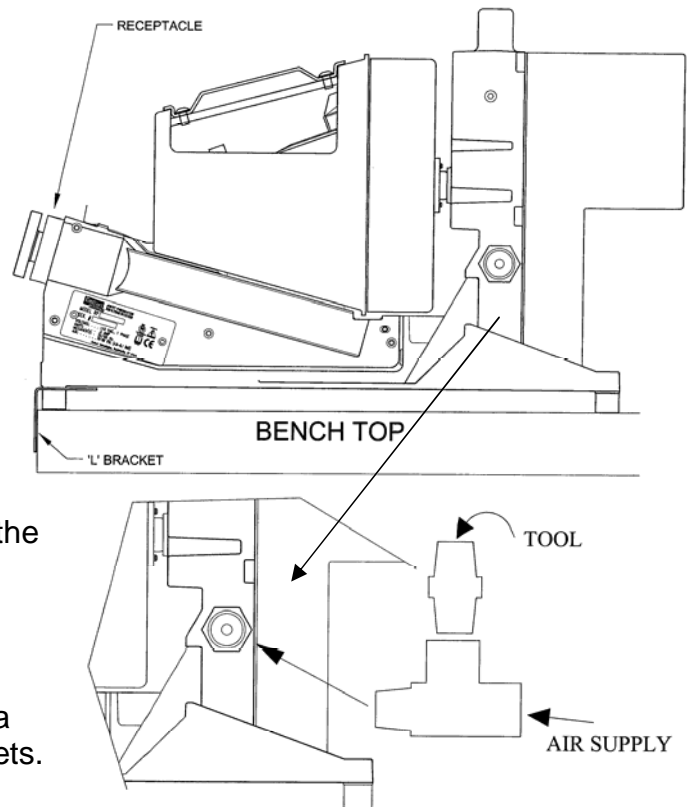
## Getting Started

After unpacking from the shipping materials, set the unit on the bench-top. Unscrew the front Foot Pad and L bracket, turn L bracket over, and screw Foot Pad back into place. This provides a stop so the unit does not move backward in use.

Connect the air supply. An optional Tee fitting and Hex Nipple are supplied so that a single air line may be used to power both the Rivet Presenter and the Rivetool.

Plug in the Electric Power cord and turn on the Power Switch.

Add rivets to the Reservoir up to the fill line shown inside. Insert the Rivetool into the Presenter Receptacle and hold in place for a few minutes to allow the Track to fill with rivets. You are now ready to work.



## Unit Operation

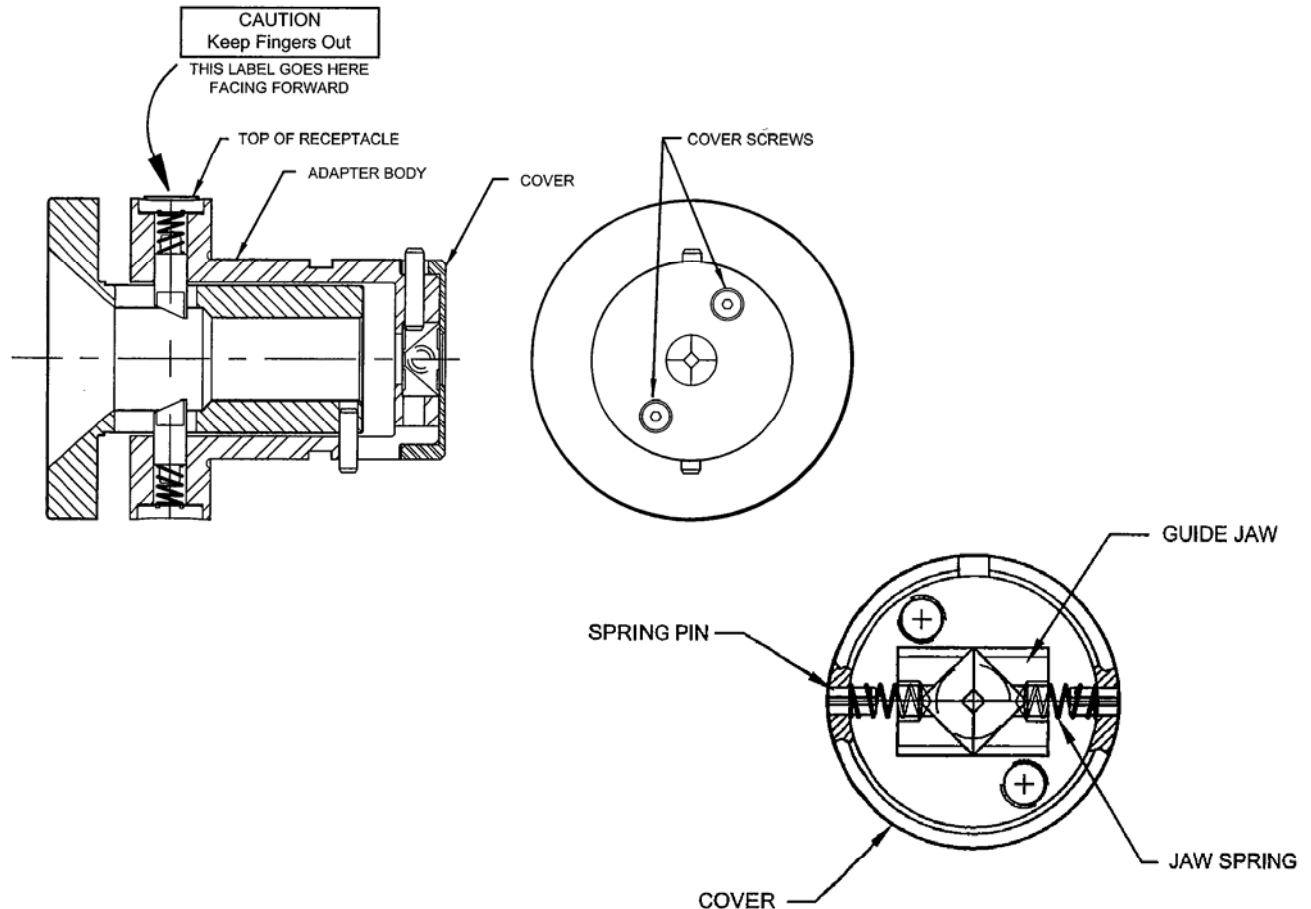
Insert the nose of the Rivet Setting Tool into the Rivet Presenter Receptacle and push it in to activate the unit. Remove the tool and rivet.

When the tool is inserted into the Presenter the Feed Drum starts rotating and dropping rivets into the track Orientation Plate. At the same time one air cylinder moves the Index Head at the bottom of the Rivet Track, allowing one rivet to drop into the Bottom Chamber. Another air cylinder pushes the dropped rivet into the Tool Nosepiece. The vacuum Mandrel Collection System of the Tool holds the rivet into the Nosepiece when the tool is removed from the Presenter.

For safest operation, be sure to keep Spring Guard in place and Reservoir Cover closed.

## Care and Maintenance

In normal use, occasional cleaning of the Receptacle is all that is usually required. Remove the Receptacle from the unit by unscrewing the Thumbscrew and sliding the Receptacle out. Remove the two screws holding the back cover on and Carefully remove the Cover. **NOTE:** Take care not to lose the Guide Jaws and Springs inside.



**Re-Assembly Hint:** Assemble the Guide Jaws and Springs in place as shown and hold them in place with the allen wrench used for the two screws. Put this in place on the Adapter Assembly, Jaws in the slot, and slowly remove the wrench from the slot. The Cover Assembly should seat fully to allow attachment of the Cover Screws.

When cleaning the Receptacle Assembly, wipe off dirt from the surfaces of the Guide Jaws, and the Guide Jaw Slot in the Adapter Body. Lubrication of the Guide Jaws is not recommended. **Do Not** use grease or solid lubrication on these surfaces as this will collect dirt and inhibit smooth operation.

# Troubleshooting

<b>Trouble</b>	<b>Probable Cause</b>	<b>Remedy</b>
Feed Drum does not rotate	Power disconnected or switched off	Plug in Power Cord, switch on power and insert Rivetool
Feed Drum rotates but rivet is not inserted	Air supply disconnected or shut off	Check air supply and valve
Unit activates but rivet is not inserted into tool	Rivetool MCS is not switched on Unit was activated more than once without removing tool Between activations, two or more rivets are Stuck in Receptacle Guide Jaws	Slide switch on Remove Receptacle and clear rivets Position Presenter for easier direct insertion of Tool

<b>Item</b>	<b>Description</b>
1	Receptacle Assembly
2	Guard Spring
3	Rivet Escapement Assembly
4	Reservoir Cover
5	Rivet Track Assembly
6	Orientation Plate
7	Handle
8	Gear Motor Cover
9	Air Inlet
10	Specification Label
11	Bench Stop L Bracket
12	On / Off Switch
13	Feed Drum
14	Rivet Reservoir
15	Thumbscrew
16	Electrical Power Cord

# Troubleshooting

