

7. FIXED COLLECTOR BOTTLE KIT

The Fixed Collector Bottle is an alternative to the standard stem collector and allows greater storage capacity for collection of large rivet stems. To replace the stem collector with the Fixed Collector proceed as follows:

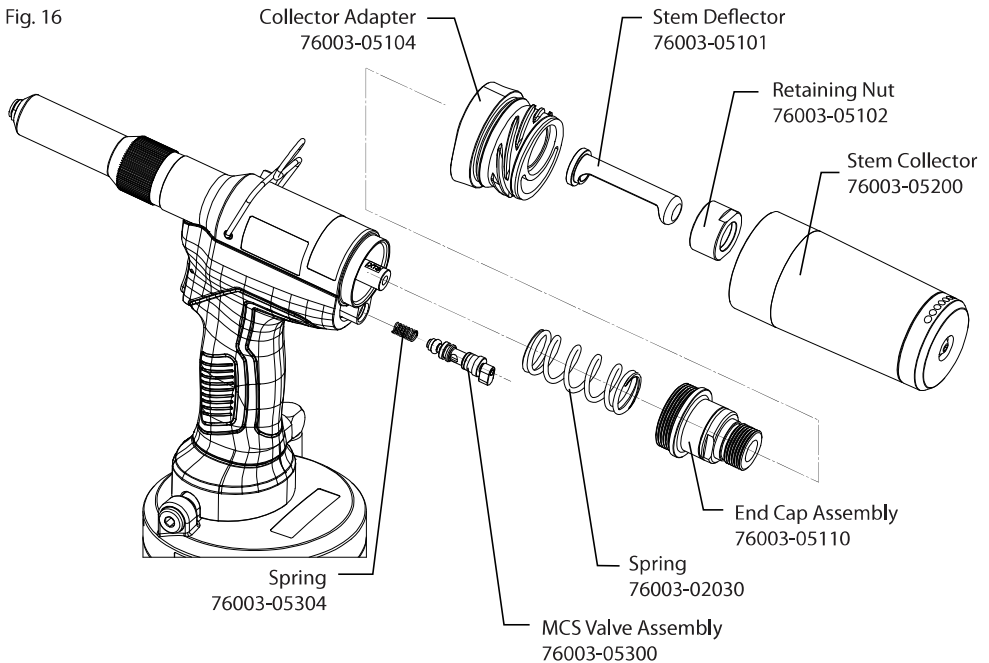
PREPARING THE BASE TOOL TO ACCEPT THE FIXED COLLECTOR BOTTLE KIT

IMPORTANT - READ THE SAFETY WARNINGS LISTED IN THE PROSET XT3 AND PROSET XT4 INSTRUCTION MANUAL CAREFULLY BEFORE PUTTING INTO SERVICE.

IMPORTANT - THE AIR SUPPLY MUST BE TURNED OFF OR DISCONNECTED BEFORE FITTING OR REMOVING THE FIXED COLLECTOR BOTTLE KIT.

Refer to fig.16 below. Refer also to the Proset XT3 and Proset XT4 Service Manuals 07900-09410 and 07900-09411.

Fig. 16



- The air supply must be disconnected.
- Rotate Stem Collector (76003-05200) anti-clockwise and remove from the Collector Adapter (76003-05104).
- Unscrew and remove the Deflector Retaining Nut (76003-05102) and the Stem Deflector (76003-05101).
- Remove the Collector Adapter (76003-05104), including O Ring (07003-00530).
- Unscrew and remove the End Cap Assembly (76003-05110), including O Ring (07003-00508). Observe caution when removing the End Cap Assembly (76003-05110) as it will be subjected to a compressive force from Spring (76003-02030).
- Remove Spring (76003-02030).
- Remove the MCS Valve Assembly (76003-05300) and the Spring (76003-05304) from the Tool.

FITTING THE FIXED COLLECTOR BOTTLE KIT

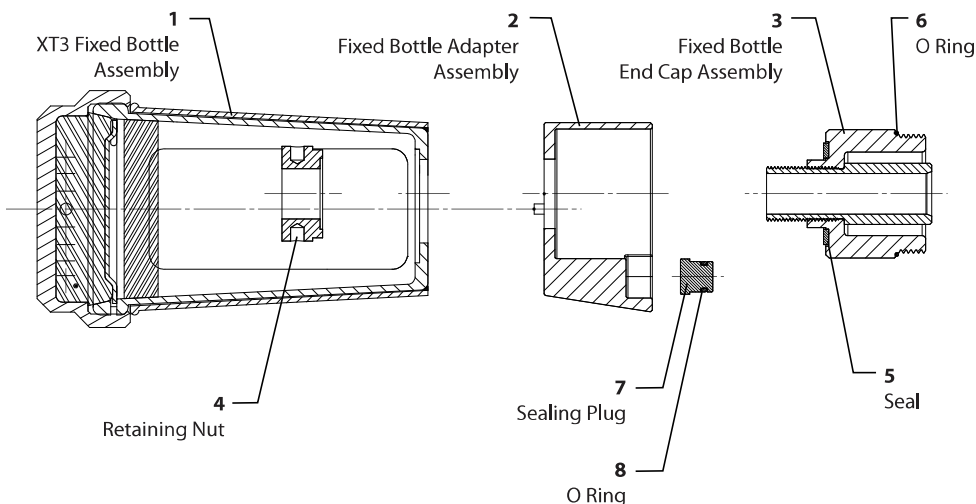
IMPORTANT - READ THE SAFETY WARNINGS LISTED IN THE PROSET XT3 AND PROSET XT4 INSTRUCTION MANUAL CAREFULLY BEFORE PUTTING INTO SERVICE.

IMPORTANT - THE AIR SUPPLY MUST BE TURNED OFF OR DISCONNECTED BEFORE FITTING OR REMOVING THE FIXED COLLECTOR BOTTLE KIT.

Refer to fig. 16 and 17 and the table 9 below. Refer also to the Proset XT3 and Proset XT4 Service Manuals 07900-09410 and 07900-09411.

Table 9 - PARTS LIST - FIXED COLLECTOR BOTTLE KIT 76003-20500			
Item	Part Number	Description	Qty
1	76003-20510	XT3 Fixed Bottle Assembly	1
2	76003-20520	Fixed Bottle Adapter Assembly	1
3	76003-20530	Fixed Bottle End Cap Assembly	1
4	76003-20501	Retaining Nut	1
5	71210-02029	Seal	1
6	07003-00278	O Ring	1
7	76003-20502	Sealing Plug	1
8	07003-00512	O Ring	1

Fig. 17



Item numbers in **bold** refer to fig. 17 and table 9.

- The air supply must be disconnected.
- Install the Spring (76003-02030) into the recess in the Fixed Bottle End Cap Assembly (**3**).
- Attach Fixed Bottle End Cap Assembly (**3**), together with the Seal (**5**), O Ring (**6**) and Spring (76003-02030) to the tool head assembly and tighten with a spanner.
- Insert the Sealing Plug (**7**), together with O Ring (**8**) fully into the bore in the tool head assembly.
- Assemble the Fixed Bottle Adapter Assembly (**2**) over the Fixed Bottle End Cap Assembly (**3**) and on to the tool.