



**SHEREX FASTENING SOLUTIONS  
SPIN-SPIN RIVET NUT INSTALLATION TOOL**

**SSG-803 / 804  
MANUAL**



**SSG-803**

**Specifications**

R.P.M.—600

\*Air pressure—70-90psi (oiled)

Air inlet—1/4"

Air consumption—5CFM

Hose Diameter—3/8"

Thread Size—

5/16-18 & 3/8-16

Metric M6, M8 & M10

Can be used for 1/4-20, but SSG-802  
is recommended for this size

**SSG-804**

**Specifications**

R.P.M.—400

\*Air pressure—70-90psi (oiled)

Air inlet—1/4"

Air consumption—5CFM

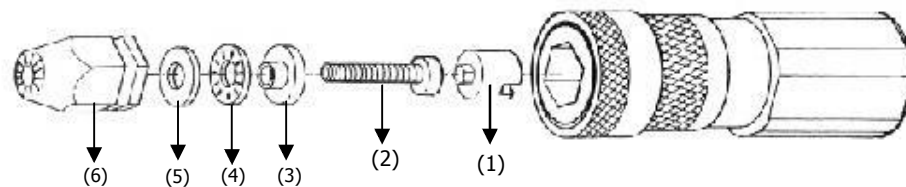
Hose Diameter—3/8"

Thread Size—5/16-18 & 3/8-16

Metric M8 & M10

Due to RPM's, Sherex generally  
recommends the SSG-803 for these  
sizes.

\* Must be adjusted to suit thread size/application



**(1.) Assemble the bearing set (parts 2,3,4,5) shown in figure**

**(2.)**



**(2.) Insert part 1 into the Gun Body. Rotate part 1 until the slot connects with the Gun Body, shown in figure**

**(3.)**



**(3.) Install the pre-assembled bearing set with part 1**

**(4.)**



**(4.) Insert part 6 into Gun Body's hexagon slot**

**(5.)**



**(5.) Push Gun Body's quick releasing ring backward and push part 6 into the Gun Body. Completely release the quick releasing ring to complete the tool assembly**

# Sherex Spin/Spin Rivet Nut Tool



**Keep  
threads  
Lubricated!**

## SSG-800 series

### Instructions for Use:

1. Insert head set into tool as described on page 2.
2. Turn the rivet nut onto the cap screw — 1 complete turn.
3. Insert the rivet nut into the work piece.
4. Depress the top part of the trigger (F position). When the rivet nut is completely installed the tool will stall.
5. Once the tool stalls, release the top of the trigger and depress the bottom of the Trigger (R position). The tool will reverse out of the work piece leaving the rivet nut completely installed.

The SSG provides a quick and easy way of installing rivet nuts. This tool uses torque to install rivet nuts so it does not need any adjustment, it is already set for the rivet nut. **If necessary, minor adjustments can be made by increasing or decreasing air pressure.**

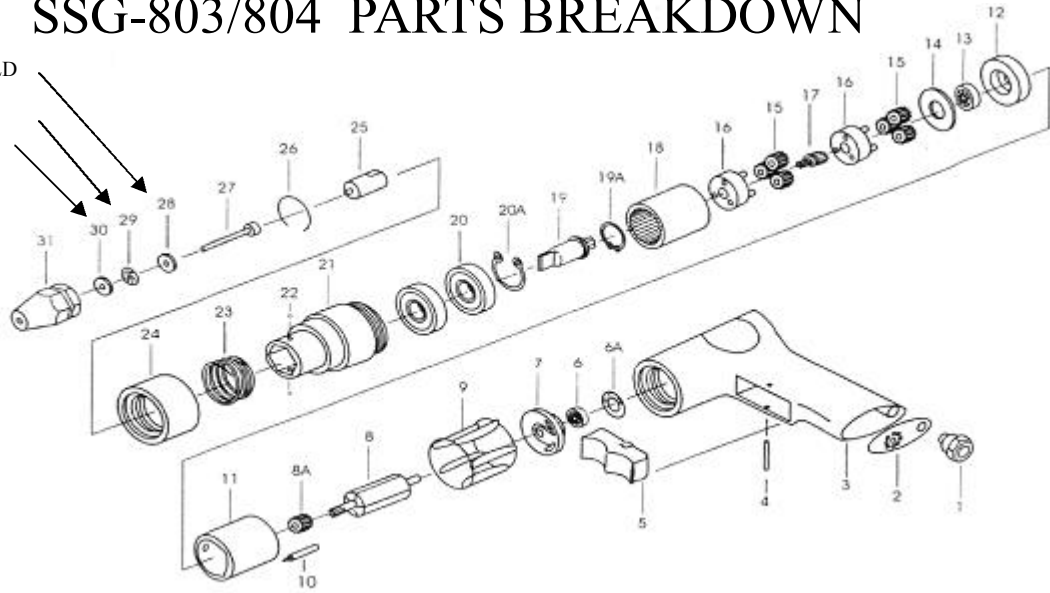
This tool is recommended for use with Sherex CAL, CAK, CAH, CAO, CPB, CFT, and CFW rivet nuts. Feel free to ask questions about specific applications, or use with other rivet nut styles.

# SSG-803/804 PARTS BREAKDOWN

28, 29, & 30 SOLD  
AS COMPLETE  
SET BS-XX

**KEEP BEARING  
SET WELL  
GREASED!**

USE SHEREX  
SSG-LUBE OR  
LUBRIPLATE  
L0161-001



Part No.	Description	NO. Required	Part No.	Description	NO. Required
SSG-803-1	Air Inlet	1	SSG-803-16	Gear Cage	2
SSG-803-2	Diffuser-Exhaust	1	SSG-804-16	Gear Cage	2
SSG-803-3	Handle Assembly	1	SSG-803-17	Sun Gear (12T)	1
SSG-803-4	Pin (3x28)	1	SSG-804-17	Sun Gear (9T)	1
SSG-803-5	Trigger	1	SSG-803-18	Internal Gear	1
SSG-803-6A	Gasket	1	SSG-804-18	Internal Gear	1
SSG-803-6	Ball Bearing (696zz)	1	SSG-803-19	Drive Spindle	1
SSG-803-7	Rear Plate	1	SSG-803-19A	Retaining Ring	1
SSG-803-8	Rotor (6T)	1	SSG-803-20	Ball Bearing (6200z)	2
SSG-804-8	Rotor (9T)	1	SSG-803-20A	Retaining Ring	1
SSG-803-8A	Sun Gear (12T)	1	SSG-803-21	Nose Housing	1
SSG-803-9	Rotor Blade	5	SSG-803-22	Locking Balls	2
SSG-803-10	Roll Pin (2.5x10)	2	SSG-803-23	Spring	1
SSG-803-11	Cylinder	1	SSG-803-24	Quick Change Sleeve	1
SSG-803-12	Front End Plate	1	(25) HD-XX	Hex Driver	1
SSG-804-12	Front End Plate (34X6)&(34X8)	1	SSG-803-26	Circlip	1
SSG-803-13	Ball Bearing (626zz)	1	(27)—MA-XXXX	Mandrel (socket hd cap screw)*	1ea
SSG-804-13	Ball Bearing (698zz)	1	(28, 29, & 30)	Rear Thrust Plate, Roller Bearings & Washer (Bearing Set)	1ea
SSG-803-14	Washer	1	Sold as a set BS-25 to BS-37 BS-M6 to BS-M10		
SSG-803-15	Planet Gear (15T)	6			
SSG-804-15	Planet Gear (16T)	6			
			(31) Nose Piece	Nose Piece (Sold w/Head sets) Head Sets Designated by Thread Size. HS-2520, HS-3118, HS-3716 & Metric HS-M6, HS-M8, HS-M10 Includes 25, 27, 28, 29, 30, & 31	1

\* Use only high Quality Socket head cap screws such as Unbrako®, or Holokrome®