



**SHEREX FASTENING SOLUTIONS
SPIN-SPIN RIVET NUT INSTALLATION TOOL**

**SSG-801 / 802
MANUAL**



SSG-801

Specifications

R.P.M.—3000

*Air pressure—35-80psi (oiled)

Air inlet—1/4"

Air consumption—5CFM

Hose Diameter—3/8"

Thread Size—4-40, 6-32, 8-32

Metric M3 & M4

SSG-802

Specifications

R.P.M.—1500

*Air pressure—60-90psi (oiled)

Air inlet—1/4"

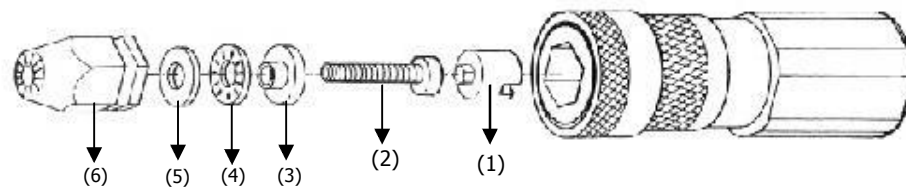
Air consumption—5CFM

Hose Diameter—3/8"

Thread Size—10-24, 10-32,
1/4-20, and 1/4-28

Metric M5 & M6

* Must be adjusted to suit thread size/application



(1.) Assemble the bearing set (parts 2,3,4,5) shown in figure

(2.)



(2.) Insert part 1 into the Gun Body. Rotate part 1 until the slot connects with the Gun Body, shown in figure

(3.)



(3.) Install the pre-assembled bearing set with part 1

(4.)



(4.) Insert part 6 into Gun Body's hexagon slot

(5.)



(5.) Push Gun Body's quick releasing ring backward and push part 6 into the Gun Body. Completely release the quick releasing ring to complete the tool assembly

Sherex Spin/Spin Rivet Nut Tool



**Keep
threads
Lubricated!**

SSG-800 series

Instructions for Use:

1. Insert head set into tool as described on page 2.
2. Turn the rivet nut onto the cap screw — 1 complete turn.
3. Insert the rivet nut into the work piece.
4. Depress the top part of the trigger (F position). When the rivet nut is completely installed the tool will stall.
5. Once the tool stalls, release the top of the trigger and depress the bottom of the Trigger (R position). The tool will reverse out of the work piece leaving the rivet nut completely installed.

The SSG provides a quick and easy way of installing rivet nuts. This tool uses torque to install rivet nuts so it does not need any adjustment, it is already set for the rivet nut. **If necessary, minor adjustments can be made by increasing or decreasing air pressure.**

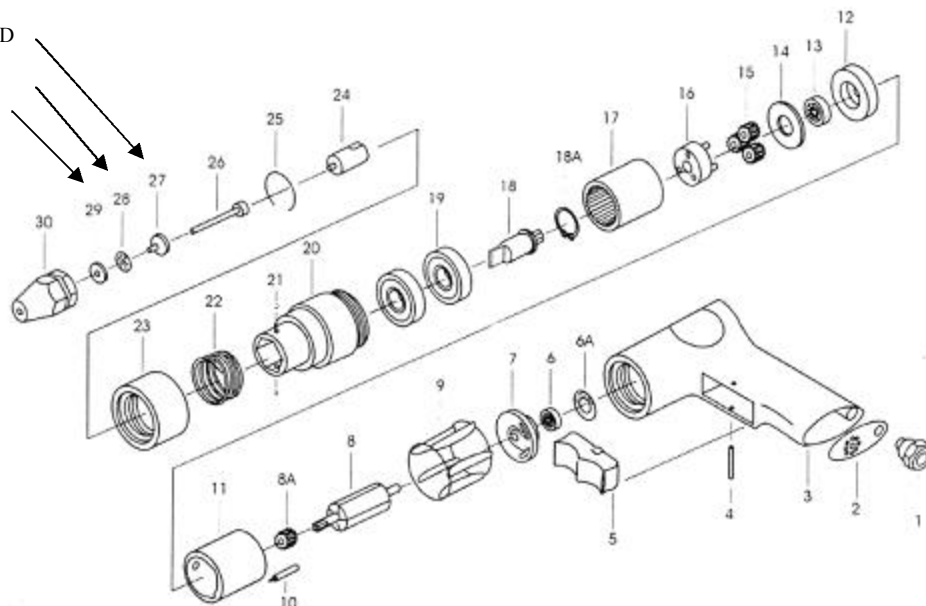
This tool is recommended for use with Sherex CAL, CAK, CAH, CAO, CPB, CFT, and CFW rivet nuts. Feel free to ask questions about specific applications, or use with other rivet nut styles.

SSG-801/802 PARTS BREAKDOWN

27, 28, & 29 SOLD
AS COMPLETE
SET BS-XX

**KEEP BEARING
SET WELL
GREASED!**

USE SHEREX
SSG-LUBE OR
LUBRIPLATE
L0161-001



Part No.	Description	NO. Required	Part No.	Description	NO. Required
SSG-802-1	Air Inlet	1	SSG-801-16	Gear Cage	1
SSG-802-2	Diffuser-Exhaust	1	SSG-802-16	Gear Cage	1
SSG-802-3	Handle Assembly	1	SSG-802-17	Internal Gear	1
SSG-802-4	Pin (3x28)	1	SSG-802-18	Drive Spindle	1
SSG-802-5	Trigger	1	SSG-802-18A	Retaining Ring	1
SSG-802-6A	Gasket	1	SSG-802-19	Ball Bearing (6200z)	2
SSG-802-6	Ball Bearing (696zz)	1	SSG-802-20	Nose Housing	1
SSG-802-7	Rear Plate	1	SSG-802-21	Locking Balls	2
SSG-802-8	Rotor (6T)	1	SSG-802-22	Change Value Spring	1
SSG-801-8A	Sun Gear (12T)	1	SSG-802-23	Quick Change Sleeve	1
SSG-802-9	Rotor Blade	5	(24) HD-XX	Hex Driver	1
SSG-802-10	Roll Pin (2.5x10)	2	SSG-802-25	Circlip	1
SSG-802-11	Cylinder	1	(26)—MA-XXXX	Mandrel (socket hd cap screw)*	1ea
SSG-802-12	Front End Plate	1	(27, 28, & 29) Sold as a set BS-4 to BS-25 BS-M3 to BS-M6	Rear Thrust Plate, Roller Bearings & Washer	1ea
SSG-802-13	Ball Bearing (626zz)	1			
SSG-802-14	Washer	1			
SSG-801-15	Planet Gear (15T)	3	(30) Nose Piece	Nose Piece (Sold w/Head sets) Head Sets Designated by Thread Size.	1
SSG-802-15	Planet Gear (18T)	3		801: HS-0440, HS-0632, HS-0832, HS-M3, HS-M4. 802: HS-1024, HS-1032, HS-2520, HS-2528. HS-M5, HS M6	

* Use only high Quality Socket head cap screws such as Unbrako®, or Holokrome®