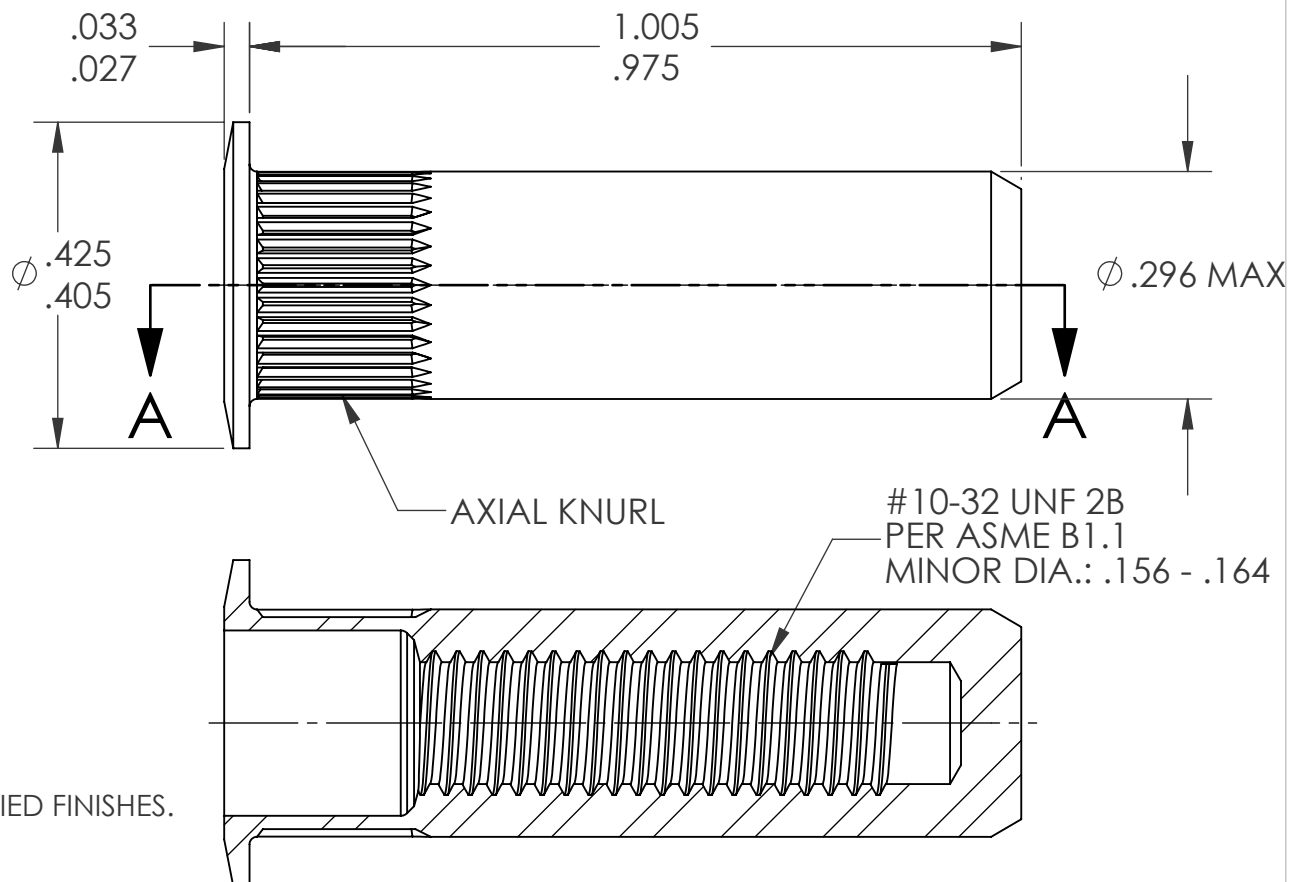
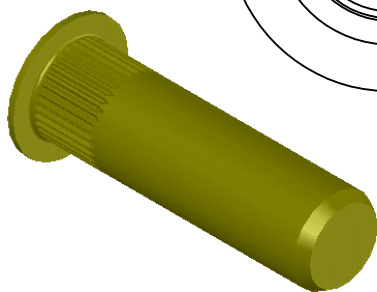
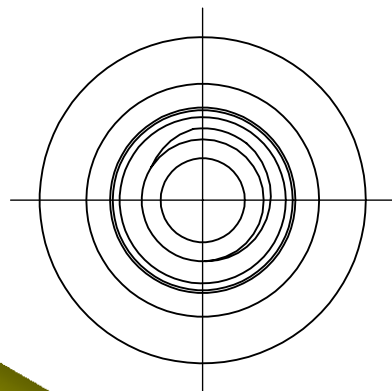


REVISIONS			
REV.	DESCRIPTION	DATE	ECN
A	INITIAL RELEASE	5/23/05	
B	NEW FINISH PER SFS-01-001, SC2	1/14/15	1735




#### NOTE:

- GRIP RANGE: .020 - .130
- HOLE SIZE: .297 +.006/-.000 AFTER ALL APPLIED FINISHES.
- INSTALLED LENGTH: .845 MAX.
- INSTALLED THREAD DEPTH: .730 REF.
- LUBRICATION: OIL
- INSTALLATION TOOL: SSG 802 SPIN SPIN

#### SECTION A-A

**PROPRIETARY AND CONFIDENTIAL**  
THIS DRAWING, AND THE INFORMATION CONTAINED HEREIN, ARE THE PROPERTY OF SHEREX AND ARE NOT TO BE USED IN ANY MANNER DETRIMENTAL TO THE INTEREST OF THE COMPANY.  
SHEREX SOLUTIONS RESERVES THE RIGHT TO REVISE PART/DRAWING WITHOUT NOTICE.

		UNLESS OTHERWISE SPECIFIED:		NAME	DATE			
		DIMENSIONS ARE IN INCHES TOLERANCES: ANGULAR: MACH±1 BEND ±1 TWO PLACE DECIMAL ±.01 THREE PLACE DECIMAL ±.002	DRAWN	TOO	5/23/05			
		INTERPRET GEOMETRIC TOLERANCING PER: ASME Y14.5M-1994	CHECKED			TITLE:  LARGE FLANGE CLOSED END		
			ENG APPR.	TOO	5/23/05			
			MFG APPR.	AJP	5/23/05			
			Q.A.					
		MATERIAL  C1008/C1010	COMMENTS: E-mail: info@sherex.com www.sherex.com Phone: 866-474-3739 Fax: 716-875-0358			SIZE DWG. NO.		REV
		FINISH ZINC PLATE W/YELLOW TRIVALENT CHROMATE PER SFS-01-001, SC2				A CAL2-1032-130B		B
NEXT ASSY	USED ON					SCALE: 2:1 WEIGHT:.0058 kg SHEET 1 OF 1		
APPLICATION		DO NOT SCALE DRAWING						