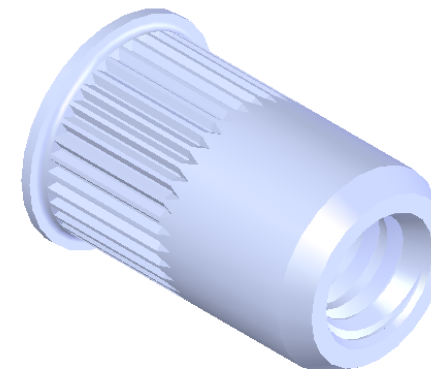
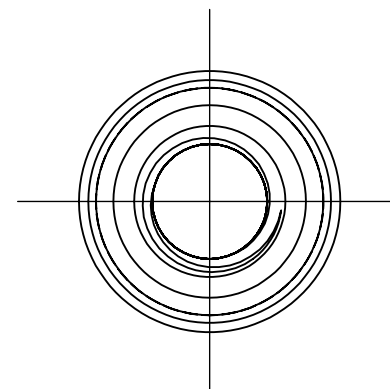


SECTION A-A

NOTE:

1. GRIP RANGE: .020 - .130
2. HOLE SIZE: .297 +.006/-.000 AFTER ALL APPLIED FINISHES.
3. INSTALLED LENGTH: .315 MAX.
4. LUBRICATION: NONE
5. INSTALLATION TOOL: MS 50 SPIN PULL

REVISIONS			
REV.	DESCRIPTION	DATE	ECN
A	INITIAL RELEASE	2/12/10	1277



PROPRIETARY AND CONFIDENTIAL
THIS DRAWING, AND THE INFORMATION CONTAINED HEREIN, ARE THE PROPERTY OF SHEREX AND ARE NOT TO BE USED IN ANY MANNER DETRIMENTAL TO THE INTEREST OF THE COMPANY.
SHEREX SOLUTIONS RESERVES THE RIGHT TO REVISE PART/DRAWING WITHOUT NOTICE.

		UNLESS OTHERWISE SPECIFIED:		NAME	DATE
		DIMENSIONS ARE IN INCHES TOLERANCES: ANGULAR: MACH± 1 BEND ±1 TWO PLACE DECIMAL ±.01 THREE PLACE DECIMAL ±.002	DRAWN	CL	2/12/10
		INTERPRET GEOMETRIC TOLERANCING PER: ASME Y14.5M-1994	CHECKED		
			ENG APPR.	JVK	2/12/10
			MFG APPR.		
		MATERIAL 302/303 STAINLESS	Q.A.	JVK	2/12/10
		FINISH PASSIVATE	COMMENTS: E-mail: info@sherex.com www.sherex.com Phone: 866-474-3739 Fax: 716-875-0358		
NEXT ASSY	USED ON				
APPLICATION		DO NOT SCALE DRAWING			



TITLE:

SMALL FLANGE OPEN END

SIZE	DWG. NO.	REV
A	CAK1-1024-130	A
SCALE: 2:1	WEIGHT: .0021 kg	SHEET 1 OF 1