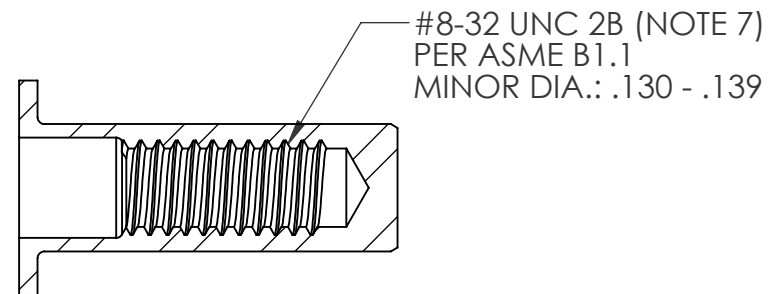
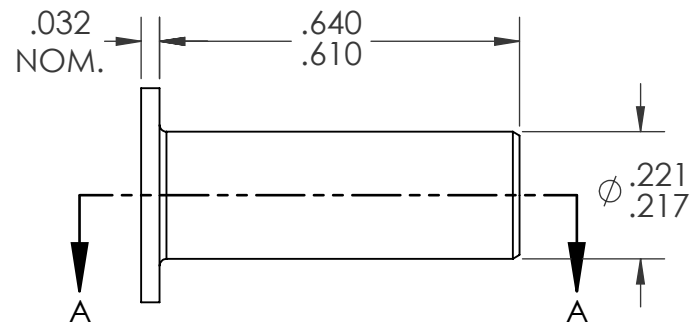
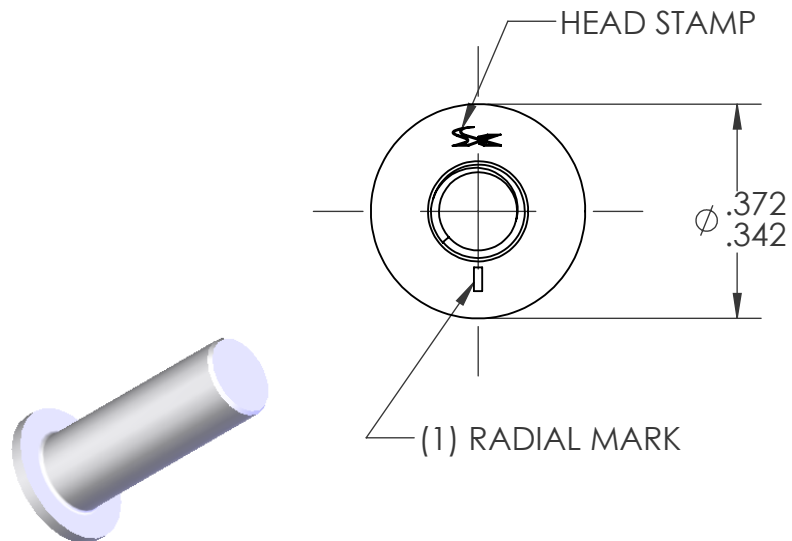


REVISIONS			
REV.	DESCRIPTION	DATE	ECN
A	INITIAL RELEASE	12/7/05	
B	UPDATE TO CURRENT FORMAT	9/1/10	1353




SECTION A-A  
SCALE 3 : 1

NOTE:

1. GRIP RANGE: .010 - .075
2. HOLE SIZE: .221 +.005/-0.000 AFTER ALL APPLIED FINISHES.
3. INSTALLED LENGTH: .490 REF.
4. INSTALLED THREAD DEPTH: .305 REF.
5. LUBRICATION: NONE
6. INSTALLATION TOOL: FLEX 5P/5S SPIN PULL
7. MAY BE PRODUCED TO 3B THREAD CLASS DEPENDING ON THE MANUFACTURING LOT NUMBER OR CUSTOMER REQUIREMENT. SPECIFIC CLASS AVAILABLE UPON REQUEST

**PROPRIETARY AND CONFIDENTIAL**  
THIS DRAWING, AND THE INFORMATION CONTAINED HEREIN, ARE THE PROPERTY OF SHEREX, AND ARE NOT TO BE USED IN ANY MANNER DETRIMENTAL TO THE INTEREST OF THE COMPANY.  
SHEREX SOLUTIONS RESERVES THE RIGHT TO REVISE PART/DRAWING WITHOUT NOTICE.

		UNLESS OTHERWISE SPECIFIED:		NAME	DATE					
		DIMENSIONS ARE IN INCHES TOLERANCES: ANGULAR: MACH± 1 BEND ±1 TWO PLACE DECIMAL ±.01 THREE PLACE DECIMAL ±.005	DRAWN	TOO	12/7/05					
			CHECKED							
		INTERPRET GEOMETRIC TOLERANCING PER: ASME Y14.5M-1994	ENG APPR.	TOO	12/7/05	TITLE:  FLAT HEAD CLOSED END				
			MFG APPR.	AJP	12/7/05					
			Q.A.							
		MATERIAL  C1008/C1010/C1110	COMMENTS:			SIZE DWG. NO.  <b>A</b> CA-0832SB-075			REV  B	
		FINISH	E-mail: info@sherex.com www.sherex.com Phone: 866-474-3739 Fax: 716-875-0358							
		ZINC PLATE CLEAR DICHROMATE PER SHEREX SFS-01-003; SC2								
NEXT ASSY	USED ON									
APPLICATION		DO NOT SCALE DRAWING				SCALE: 2:1		WEIGHT: .0022 kg	SHEET 1 OF 1	