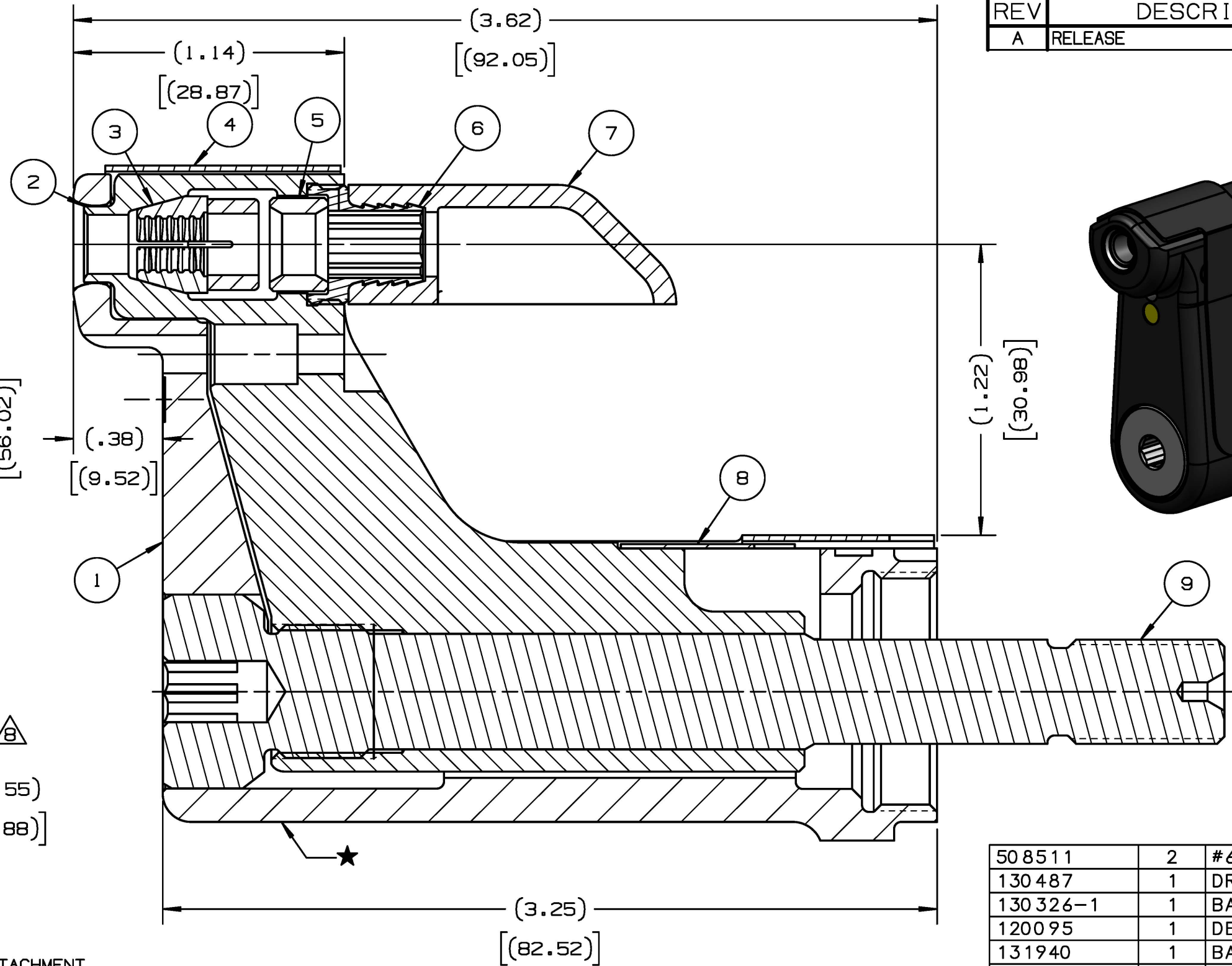


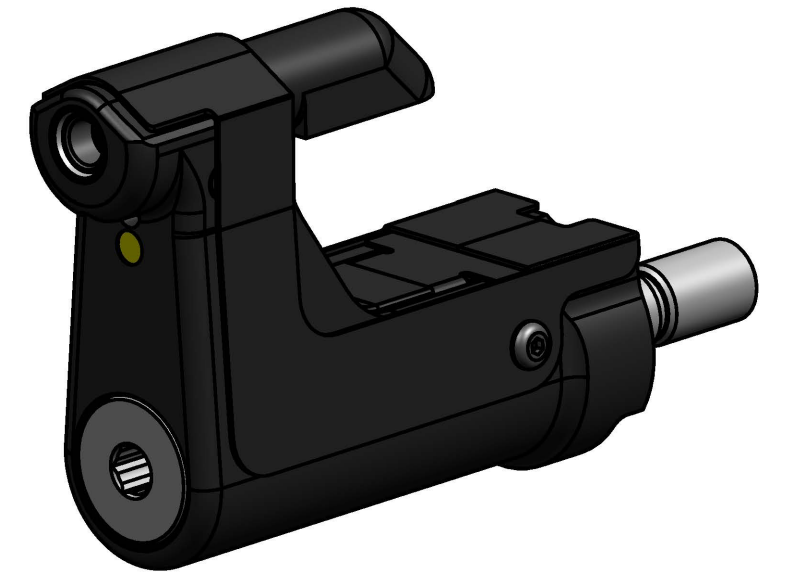
NOTES:

- 1 MAXIMUM RECOMMENDED STROKE: .562
- 2 FOR USE WITH THE 254 TOOL, USE ATTACHMENT P/N 119400-1 AND STROKE LIMITER 118362
- 3 FOR USE WITH 2582 TOOL, USE ATTACHMENT P/N 119400-1 AND STROKE LIMITER KIT 119888
- 4 FOR OTHER TOOLS AND/OR OTHER TOOL AND STROKE COMBINATIONS, CONSULT ENGINEERING DEPARTMENT
- 5 SHIP WITH STOP 126747
- 6 131999 PINTAIL CATCHER KIT AVAILABLE WHICH CONSISTS OF:  
126748-1 UNITIZED DEFLECTOR  
130754 ADJUSTMENT SCREW  
130753 PINTAIL CATCHER  
506035 SPRING
- 7 130048 CHUCK JAW, 130838 FOLLOWER, 131908 LOCATOR, 505717 SPRING AVAILABLE

△ APPLY LOCTITE 243 TO THREADS



REV	DESCRIPTION	DET	DATE
A	RELEASE	HKS	04/09/19



508511	2	#6-32 B.H.C.S.	10
130487	1	DRAWBAR	9
130326-1	1	BACK GUARD	8
120095	1	DEFLECTOR	7
131940	1	BARBED RETAINER	6
131985	1	SPACER	5
130322-1CS	1	WRAP AROUND GUARD	4
130056	1	UNITIZED JAWS	3
131960	1	COLLET	2
130826C	1	ANVIL	1
PART NO.	QTY	DESCRIPTION	ITEM

IDENTIFICATION PER SPEC 42-311: ★ PERMANENT		HUCK INTERNATIONAL, INC., I.S.D 1 CORPORATE DR KINGSTON, NEW YORK 12401	
ITAR/ECCN: EAR99		NOSE ASSEMBLY -08 LGP STRAD EXT CLR	
SCH B#: 8467.99.0190		FINAL ASSY: FOR USE WITH 206 STYLE TOOLS	
HTS: 8467.99.0190	B	99LGP-08-ZBAD	