

NOTES:

- 1 TO ASSEMBLE:
- A) THREAD LOCKNUT ON PULLER AS SHOWN.
- B) THREAD PULLER IN TOOL'S END CAP.
- C) COLLAPSE PULLER AND TIGHTEN JAM NUT USING WRENCH P/N: 128817
- D) INSTALL ANVIL OVER PULLER AND THREAD INTO TOOL'S PISTON

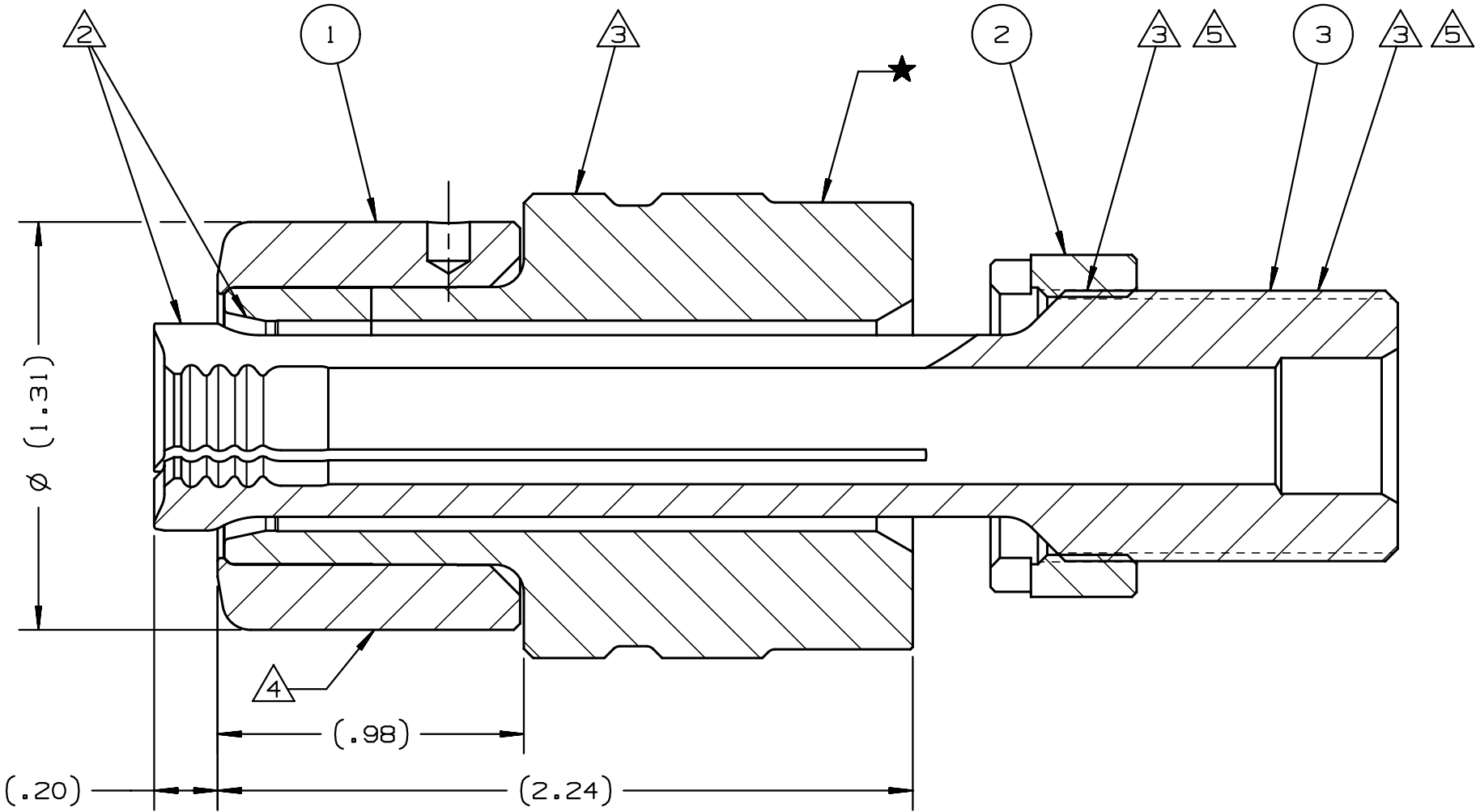
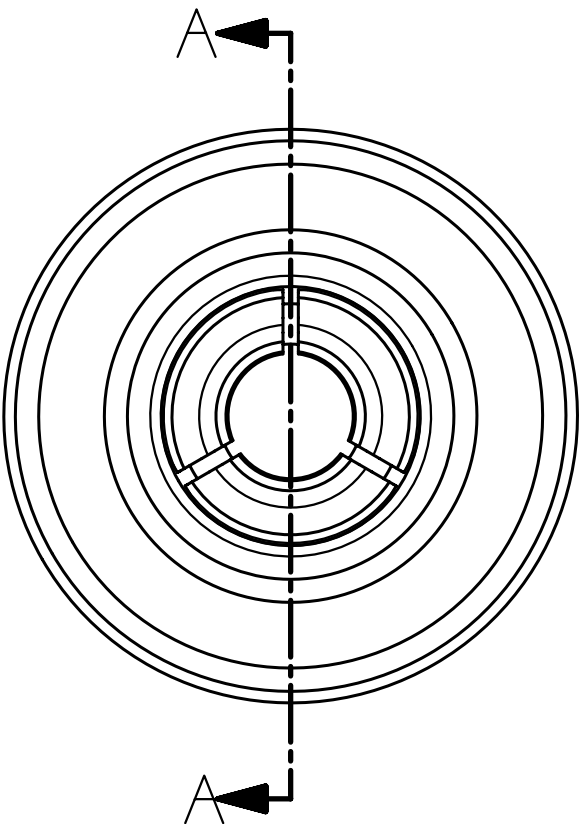
- 2

APPLY ANTI-SEIZE LUBRICANT P/N: 508183 OR EQUIVALENT TO OUTSIDE OF PULLER AND INSIDE OF ANVIL.
- 3

APPLY LOCTITE 242 P/N: 505316 TO THESE THREADED JOINTS PER MFR'S INSTRUCTIONS DURING ASSEMBLY ON TOOL.
- 4

APPLY WARNING STICKER P/N: 590273 TO ANVIL.
- 5

LEFT HAND THREAD



SECTION A - A

REV	DESCRIPTION	DET	DATE
A	RELEASE	SMA	12/13/17
B	(.20) WAS (.18), (2.24) WAS (2.26)	SMA	01/04/18

131072	1	PULLER, SF20, 12MM BT	3
128807	1	LOCKNUT, PULLER	2
128930XA	1	ANVIL ASM, 12MM BT, SF20 LS	1
PART NO.	QTY	DESCRIPTION	ITEM
IDENTIFICATION PER SPEC 42-311: ★ PERMANENT		HUCK INTERNATIONAL, INC., I.S.D 1 CORPORATE DR KINGSTON, NEW YORK 12401	
ITAR/ECCN: EAR99		NOSE, 12MM BT CA SF20 TOOL	
SCH B#: 8467.99.0190		FINAL ASSY: -	
HTS: 8467.99.0190		ENG: SMA	CK: DATE: 12/13/17 SCALE: 2:1
		B	99BT-M12-IRAT-XA