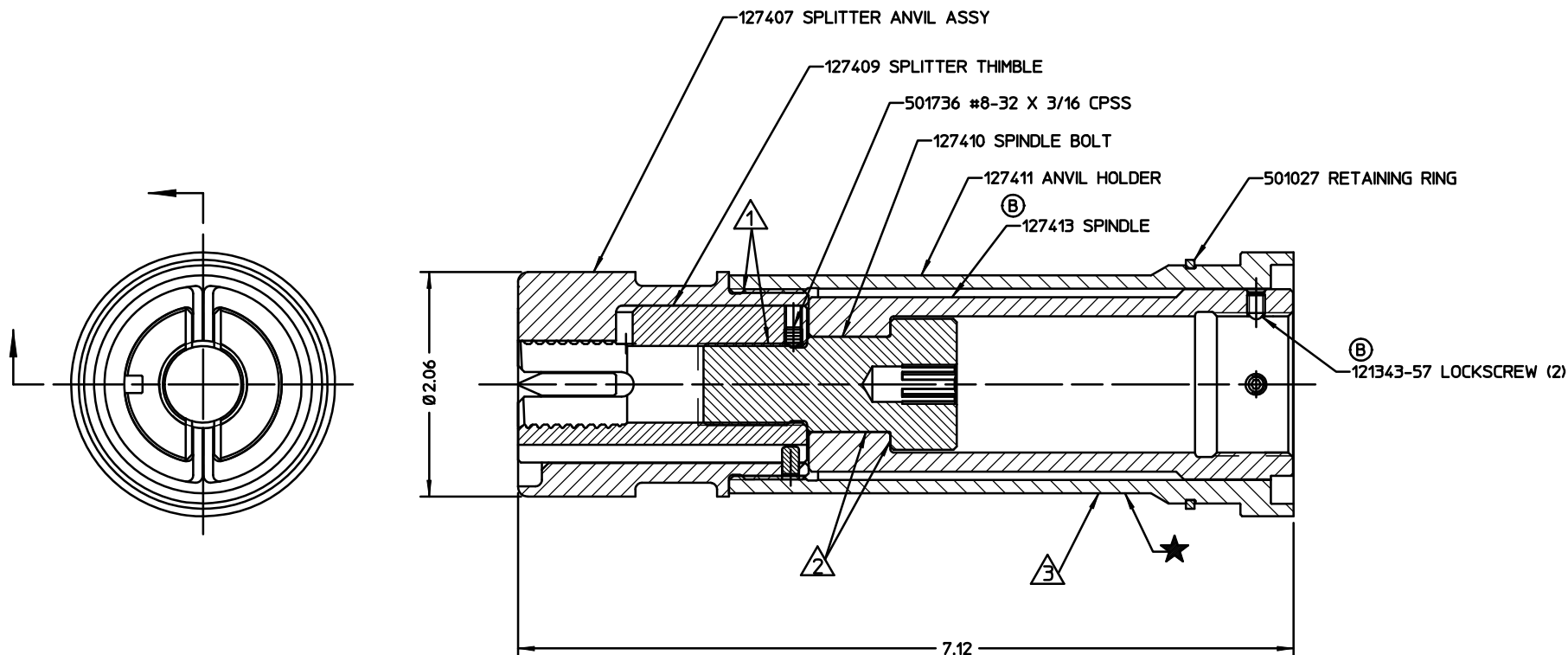


NOTES:

- 1 APPLY LOCTITE 242 P/N 505016 TO THESE THREADED JOINTS.
- 2 APPLY GREASE P/N 620030 TO SPINDLE BEFORE ASSEMBLY TO SPINDLE BOLT.
- 3 APPLY WARNING STICKER P/N 590273 TO ANVIL HOLDER.
DO NOT PERMIT STICKER TO OVERLAP ONTO ANVIL.

REV	DESCRIPTION	DATE
A	RELEASE, FORMERLY PR2657-M20CC	10/29/03
B	127413 SPINDLE WAS 127412 SPINDLE ASSEMBLY ADDED 121343-57 LOCKSCREW	05/24/04



FORM KE104 REV C		By accepting this proprietary Huck drawing, recipient agrees not to reproduce or disclose any part thereof to any others without the written permission of Huck International, Inc.					
MATERIAL:	-	SPEC:	TOLERANCES UNLESS OTHERWISE SPECIFIED: (ALL DIMENSIONS ARE IN INCHES)		HUCK INTERNATIONAL, INC., I.S.D. 1 CORPORATE DRIVE, P.O. BOX 2270 KINGSTON, NEW YORK 12401		
HARDNESS:	-	RAW OR STOCKED STATE					
HEAT TREAT TO:	-	SPEC:	.XX, .XXX ±	.01, .005	ASSY, SPLITTER NOSE - 2624HS MHS-20 (20mm) HUCKSPIN		
SURFACE TREAT:	-	SPEC:	INT. COR. RADII	.005-.015			
SURFACE FINISH NOT TO EXCEED: 125 Ra			BREAK EDGES		.005-.015	DET: CHR CK: DATE: 05/24/04 SCALE: FULL	
IDENTIFICATION PER SPEC 42-311: ★ PERMANENT			ANGLES ±		3°	FOC: B	
SURFACES TO BE ○, //, ✱, ⊥, & ▽ WITHIN .005 T.I.R.			FINAL ASSY:			FAC: 99-7512CC	