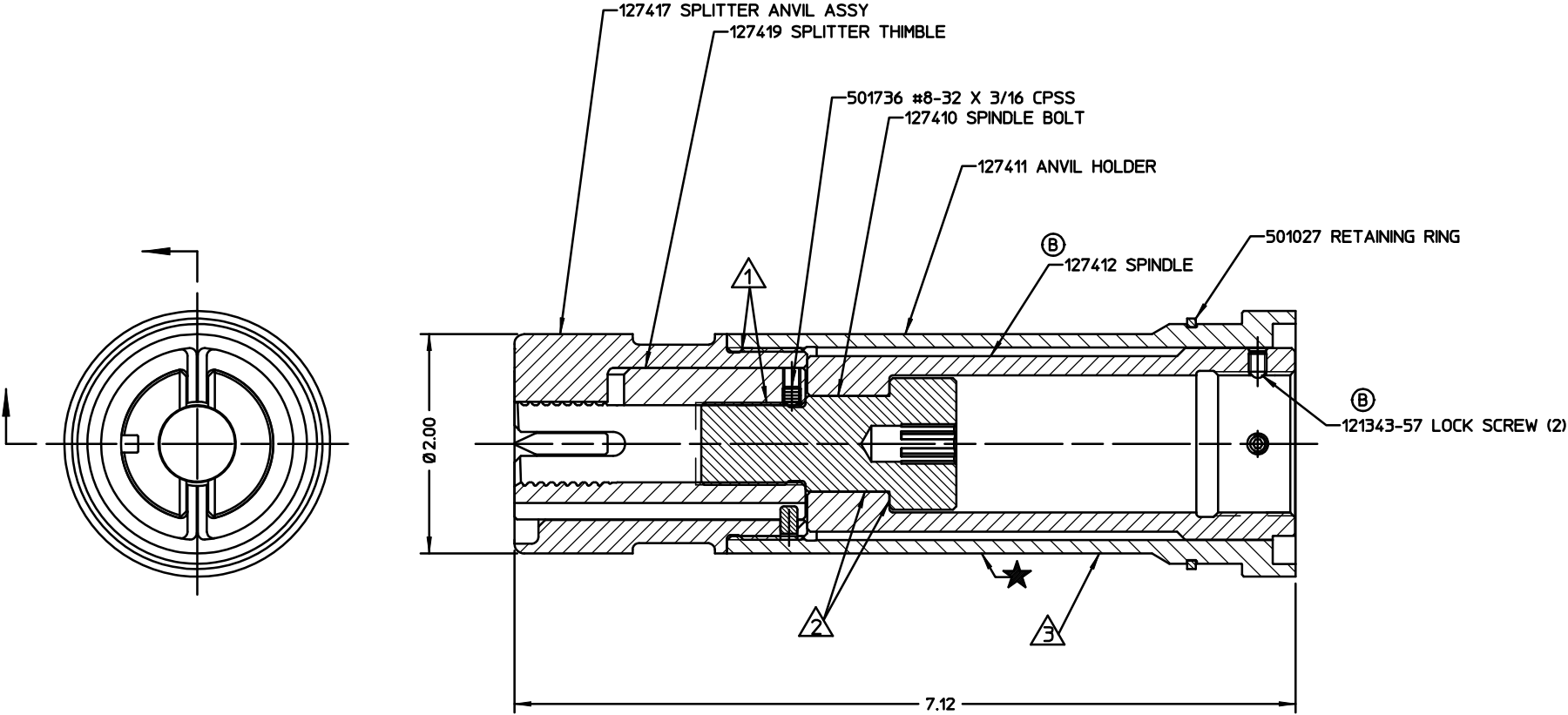


REV	DESCRIPTION	DATE
A	RELEASE, FORMERLY PR2657-24CC	10/29/03
B	121413 SPINDLE WAS 121412 SPINDLE ASSEMBLY ADDED 121343-57 LOCK SCREW	05/21/04

NOTES:

- 1 APPLY LOCTITE 242 P/N 505016 TO THESE THREADED JOINTS.
- 2 APPLY GREASE P/N 620030 TO SPINDLE BEFORE ASSEMBLY TO SPINDLE BOLT.
- 3 APPLY WARNING STICKER P/N 590273 TO ANVIL HOLDER.  
DO NOT PERMIT STICKER TO OVERLAP ONTO ANVIL.



FORM KE104 REV C		By accepting this proprietary Huck drawing, recipient agrees not to reproduce or disclose any part thereof to any others without the written permission of Huck International, Inc.				
MATERIAL:	-	SPEC:	TOLERANCES UNLESS OTHERWISE SPECIFIED: (ALL DIMENSIONS ARE IN INCHES)		HUCK INTERNATIONAL, INC., I.S.D. 1 CORPORATE DRIVE, P.O. BOX 2270 KINGSTON, NEW YORK 12401	
HARDNESS:	-	RAW OR STOCKED STATE				
HEAT TREAT TO:	-	SPEC:	.XX, .XXX ±	.01, .005	ASSY, SPLITTER NOSE - 2624HS HS-24 (3/4") HUCKSPIN	
SURFACE TREAT:	-	SPEC:	INT. COR. RADII	.005-.015		
SURFACE FINISH NOT TO EXCEED: 125 Ra			BREAK EDGES	.005-.015	DET: CHR	CK:
IDENTIFICATION PER SPEC 42-311: ★ PERMANENT			ANGLES ±	3°	DATE: 05/21/04 SCALE: FULL	
SURFACES TO BE ○, //, ◇, ⊥, & ▽ WITHIN .005 T.I.R.			FINAL ASSY:		FAC.	B 99-7503CC