

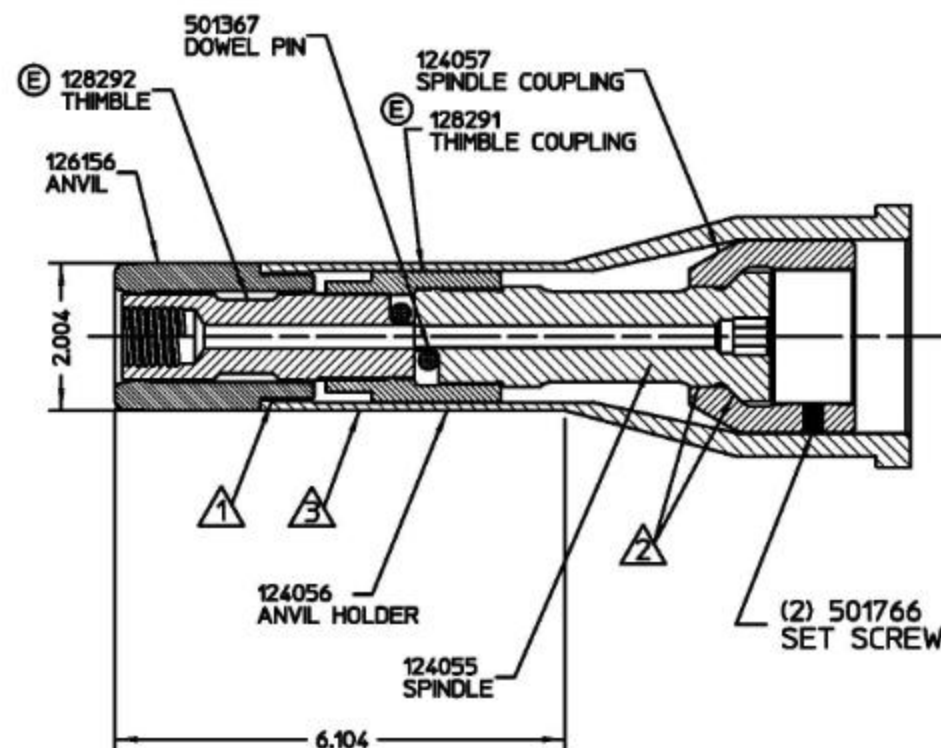
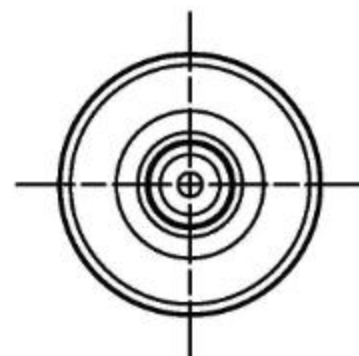
REV	DESCRIPTION	DATE
A	RELEASE, REPLACES P/N 99-3450-1	09/01/95
B	UPDATED 124057 PICTORIAL	06/11/96
C	126156 WAS 124054	07/10/00
D	127637 WAS 124268	9/20/04
E	128291, 128292 & 501367 WAS 127637. ADDED NOTE 4, REVISED ASSEMBLY INSTRUCTIONS	10/05/06

# NOTES

- 1 APPLY LOCTITE 242 P/N 505016 TO THIS THREADED JOINT.
- 2 APPLY GREASE P/N 620030 TO SPINDLE BEFORE ASSEMBLY INTO SPINDLE COUPLING.
- 3 APPLY WARNING STICKER P/N 590273 TO ANVIL HOLDER. DONOT PERMIT STICKER TO OVERLAP ONTO ANVIL.

## 4 THIMBLE ASSEMBLY P/N 128296 CONSISTS OF

- (1) 128291 THIMBLE COUPLING
- (1) 128292 THIMBLE, MHS-20
- (2) 501367 DOWEL PINS



## TO ASSEMBLE SPINDLE/THIMBLE

- A) INSERT SPINDLE 124055 INTO COUPLING 124057
- B) THREAD THIMBLE COUPLING 128291 ON SPINDLE 124055 UNTIL SPINDLE BOTTOMS.
- C) BACK OFF SPINDLE 124055 UNTIL FLAT IS ALIGNED WITH THE DOWEL PIN HOLES IN THE THIMBLE COUPLING 128291
- D) INSTAL DOWEL PINS 501367
- E) THREAD THIMBLE 128292 INTO SPINDLE COUPLING 128291 UNTIL IT BOTTOMS
- F) BACK OFF THIMBLE 128292 UNTIL FLAT IS ALIGNED WITH THE DOWEL PIN HOLES IN THE THIMBLE COUPLING 128291
- G) INSTALL DOWEL PIN 501367

HUCK INTERNATIONAL, INC., I.S.D. 85 GRAND STREET, P.O. BOX 2270 KINGSTON, NEW YORK 12401			
ASSY, NOSE MHS-20 (HS52) 20mm HUCK-SPIN			
DET:CHR	CK:	DATE: 10/05/06	SCALE: 1/2
FOC.	B	99-7418-1	
FAC.			