

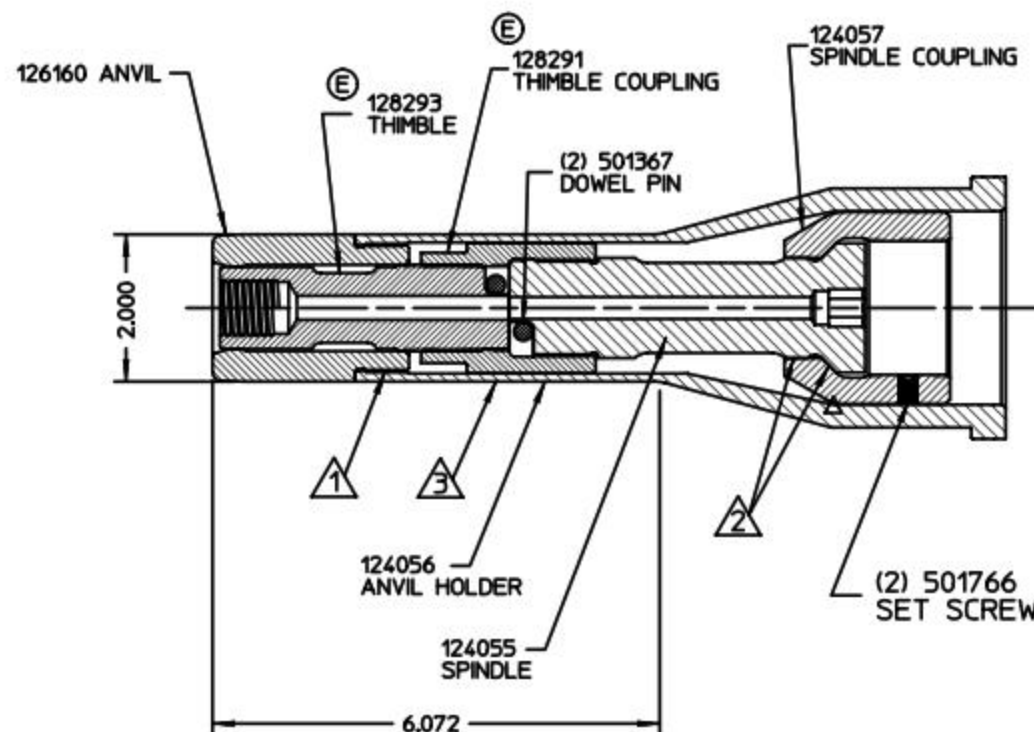
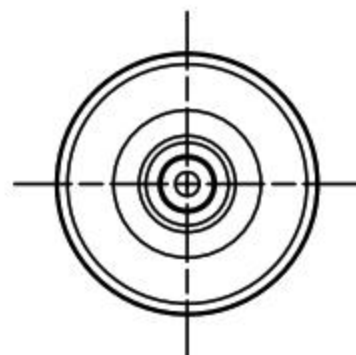
REV	DESCRIPTION	DATE
A	RELEASE, REPLACES P/N 99-3451-1	9/01/95
B	UPDATED 124057 PICTORIAL	6/11/96
C	126160 WAS 124061	07/10/00
D	127644 WAS 124263	9/20/04
E	128291, 128293 & 501367 WAS 127644, ADDED NOTE 4, REVISED ASSEMBLY INSTRUCTIONS	10/06/06

NOTES

- 1 APPLY LOCTITE 242 P/N 505016 TO THIS THREADED JOINT.
- 2 APPLY GREASE P/N 620030 TO SPINDLE BEFORE ASSEMBLY INTO SPINDLE COUPLING.
- 3 APPLY WARNING STICKER P/N 590273 TO ANVIL HOLDER. DONOT PERMIT STICKER TO OVERLAP ONTO ANVIL.

4 THIMBLE ASSEMBLY P/N 128297 CONSISTS OF

- (1) 128291 THIMBLE COUPLING
- (1) 128293 THIMBLE, HS-24
- (2) 501367 DOWEL PINS



TO ASSEMBLE SPINDLE/THIMBLE

- A) INSERT SPINDLE 124055 INTO COUPLING 124057
- B) THREAD THIMBLE COUPLING 128291 ON SPINDLE 124055 UNTIL SPINDLE BOTTOMS.
- C) BACK OFF SPINDLE 124055 UNTIL FLAT IS ALIGNED WITH THE DOWEL PIN HOLES IN THE THIMBLE COUPLING 128291
- D) INSTAL DOWEL PINS 501367
- E) THREAD THIMBLE 128293 INTO SPINDLE COUPLING 128291 UNTIL IT BOTTOMS
- F) BACK OFF THIMBLE 128293 UNTIL FLAT IS ALIGNED WITH THE DOWEL PIN HOLES IN THE THIMBLE COUPLING 128291
- G) INSTALL DOWEL PIN 501367

HUCK INTERNATIONAL, INC., I.S.D. 85 GRAND STREET, P.O. BOX 2270 KINGSTON, NEW YORK 12401			
ASSY, NOSE HS-24 (HS52) 3/4" HUCK-SPIN			
DET:CHR	CK:	DATE:10/06/06	SCALE: 1/2
FOC.	B	99-7314-1	
FAC.			