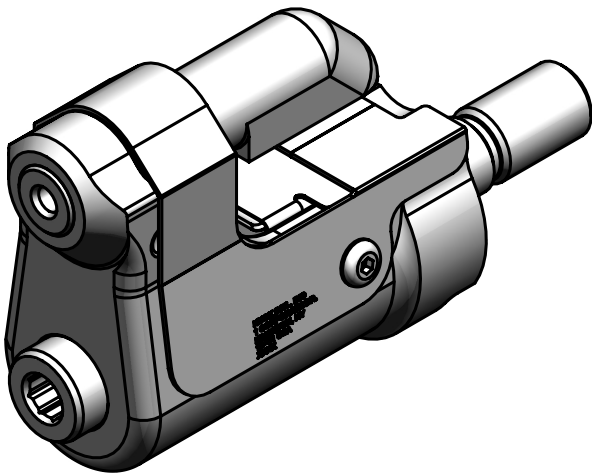
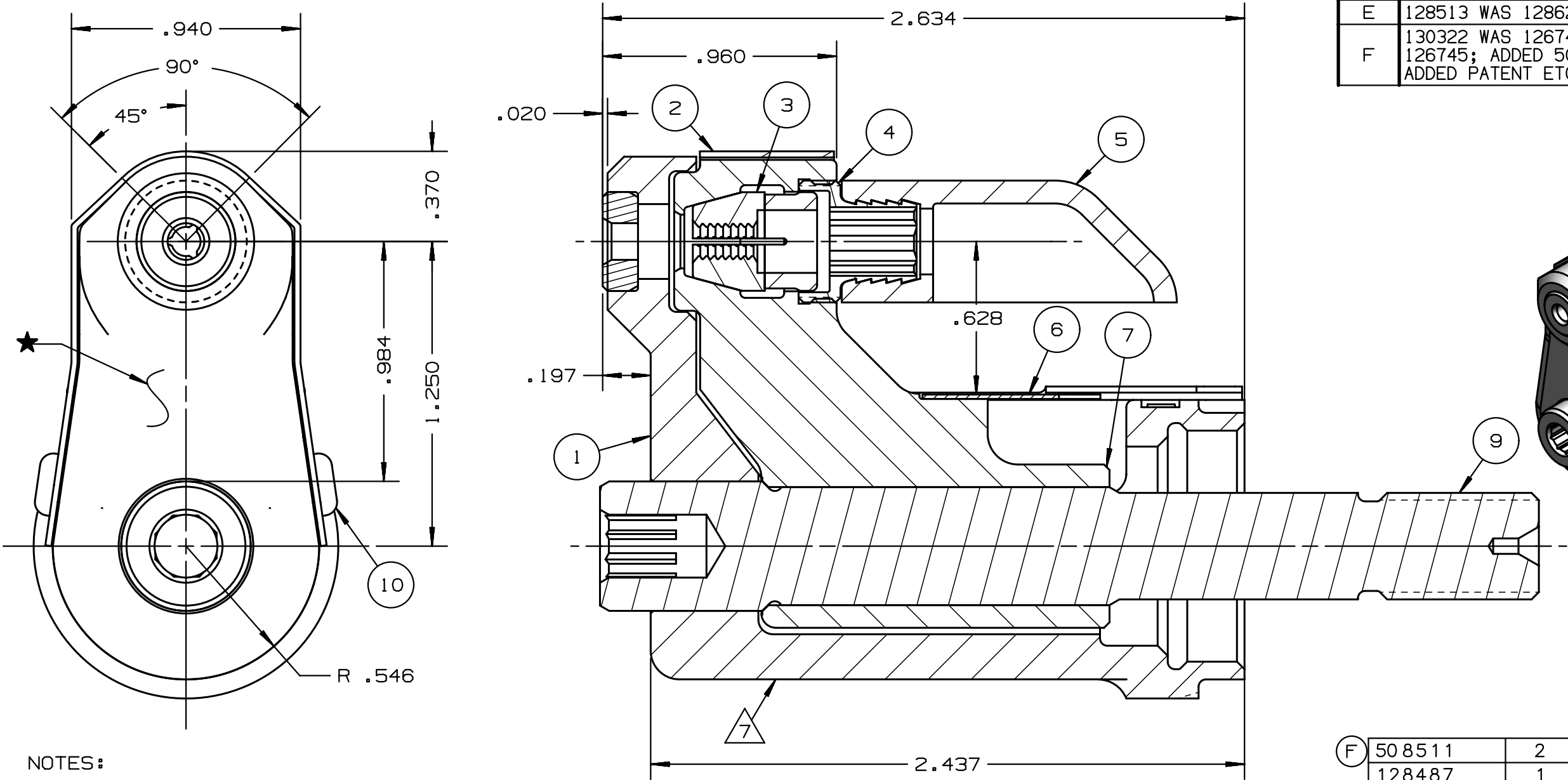


REV	DESCRIPTION	DET	DATE
D	UCJ 128079 WAS 120383,128623 ASSY WAS 127079 COLLET & 126707 DRAWBAR.		03/04/08
E	128513 WAS 128623. ADDED 128487	JJC	07/30/12
F	130322 WAS 126746; 130326 WAS 126745; ADDED 508511; ADDED VIEW; ADDED PATENT ETCH	HKS	7/22/13



NOTES:

- 1 MAXIMUM RECOMMENDED STORKE: .500
- 2 FOR USE WITH THE 225/245 TOOL, USE ATTACHEMENT P/N 119400-1 AND STROKE LIMITER 118362
- 3 FOR USE WITH 2500 TOOL, USE ATTACHMENT P/N 119400-1 AND STROKE LIMITER KIT 119888
- 4 FOR OTHER TOOLS AND/OR OTER TOOL AND STROK COMBINATIONS, CONSULT ENGINEERING DEPARTMENT
- 5 SHIP WITH STOP 126747
- 6 SHIP WITH DEFLECTOR 126748-1
- 7 ETCH "U.S. PATENT #6739170" WHERE SHOWN

FOR USE WITH 206-375

(F)	508511	2	B.H.C.S.	10
	128487	1	DRAWBAR	9
	126748-1	1	UNITIZED DEFLECTOR	8
	128513	1	COLLET	7
(F)	130326	1	GUARD	6
	120095	1	DEFLECTOR	5
	122912	1	BARBED RETAINER	4
	120383	1	UNITIZED CHUCK JAW	3
(F)	130322	1	TOP GUARD	2
	127119U	1	ANVIL	1
	PART NO.	QTY	DESCRIPTION	ITEM

IDENTIFICATION PER SPEC 42-311: ★ ETCH			
ITAR:	HUCK INTERNATIONAL, INC., I.S.D. 1 CORPORATE DR, P.O. BOX 2270 KINGSTON, NEW YORK 12401		
ECCN: EAR99	NOSE ASSEMBLY -06 FLAT BR UNIMATIC		
SCH B#: 8467.99.0190	DET: MVM	CK:	DATE: 6/16/03 SCALE: 2:1
HTS: 8467.99.0190	B	99-3717U	