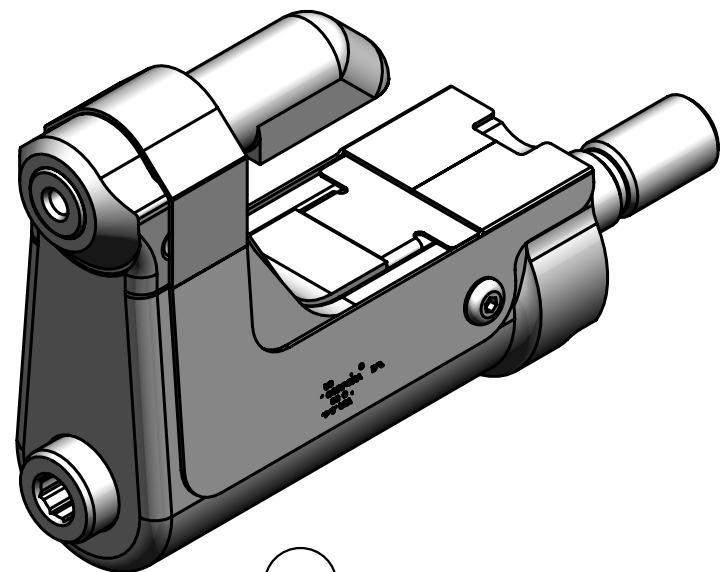


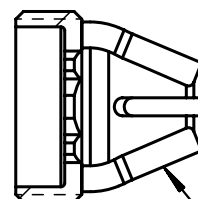
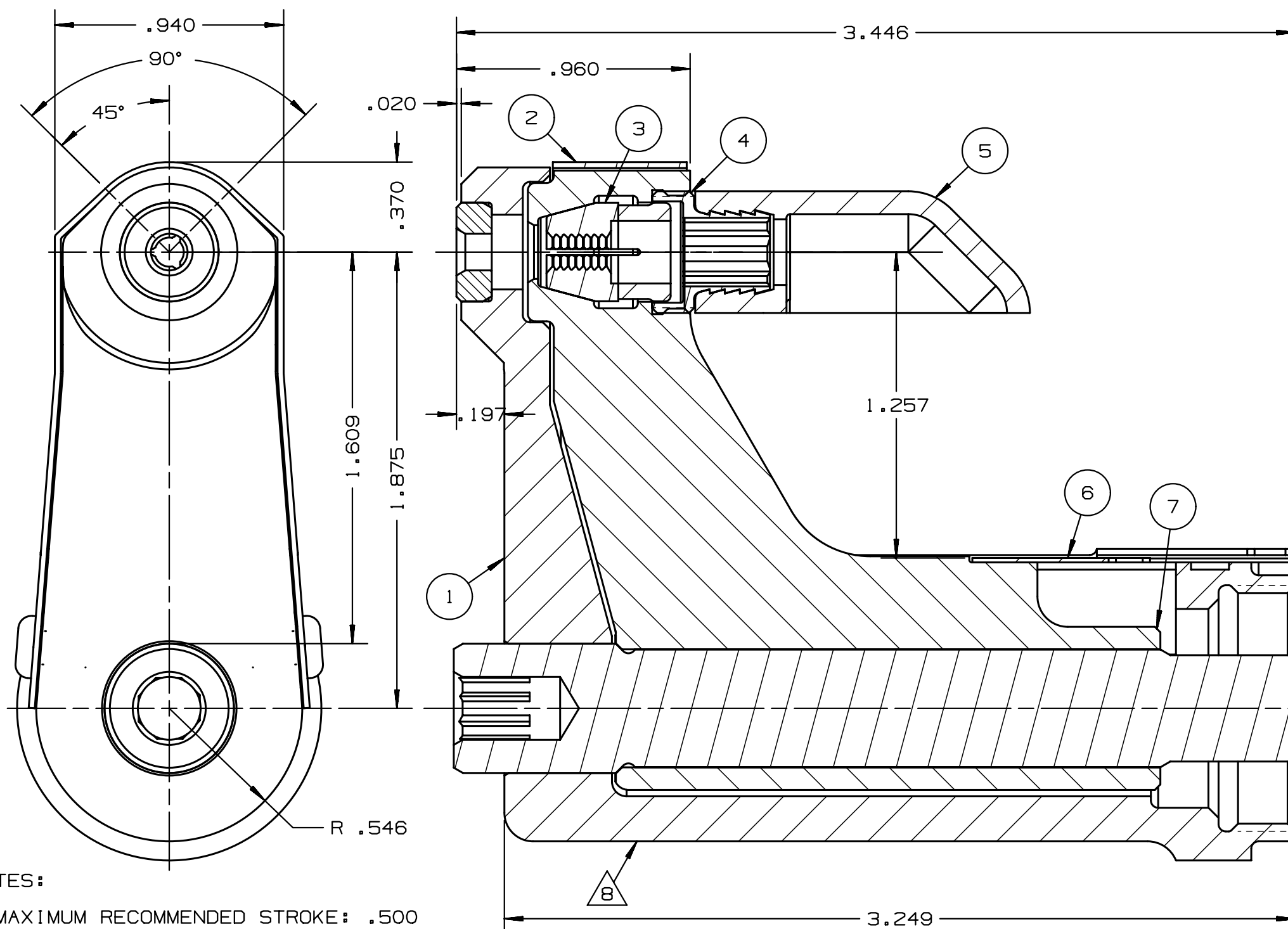
REV	DESCRIPTION	DET	DATE
E	ADDED NOTE 7.	MK	10/19/09
F	128513C WAS 128623C. ADDED 128487	JJC	07/30/12
G	130322-1 WAS 126746; 130326-1 WAS 126745; ADDED 508511; ADDED VIEW; ADDED PATENT ETCH	HKS	7/22/13



9

FOR USE WITH 206-375			
G 508511	2	B.H.C.S.	10
128488	1	DRAWBAR	9
126748-1	1	UNITIZED DEFLECTOR	8
128514	1	COLLET	7
G 130326-1	1	GUARD	6
120095	1	DEFLECTOR	5
122912	1	BARBED RETAINER	4
128079	1	UNITIZED CHUCK JAW	3
G 130322-1	1	TOP GUARD	2
127120U	1	ANVIL	1
PART NO.	QTY	DESCRIPTION	ITEM

IDENTIFICATION PER SPEC 42-311: ★ ETCH			
ITAR:	HUCK INTERNATIONAL, INC., I.S.D. 1 CORPORATE DR, P.O. BOX 2270 KINGSTON, NEW YORK 12401		
ECCN: EAR99	NOSE ASSEMBLY -06 FLAT BR LONG UNIMATIC		
SCH B#: 8467.99.0190	DET: MVM	CK:	DATE: 10/29/02 SCALE: 2:1
HTS: 8467.99.0190	B	99-3717-1U	



8

NOTES:

- 1 MAXIMUM RECOMMENDED STROKE: .500
- 2 FOR USE WITH THE 225/245 TOOL, USE ATTACHMENT P/N 119400-1 AND STROKE LIMITER KIT 119362
- 3 FOR USE WITH 2500 TOOL, USE ATTACHMENT P/N 119400-1 AND STROKE LIMITER KIT 119888
- 4 FOR OTHER TOOLS AND/OR OTHER TOOL AND STROKE COMBINATIONS, CONSULT ENGINEERING DEPARTMENT
- 5 SHIP WITH STOP 126747
- 6 SHIP WITH DEFLECTOR 126748-1
- 7 128624 ASSEMBLY CONSISTS OF 128514 COLLET AND 128488 DRAWBAR.

△ ETCH "U.S. PATENT #6739170" WHERE SHOWN