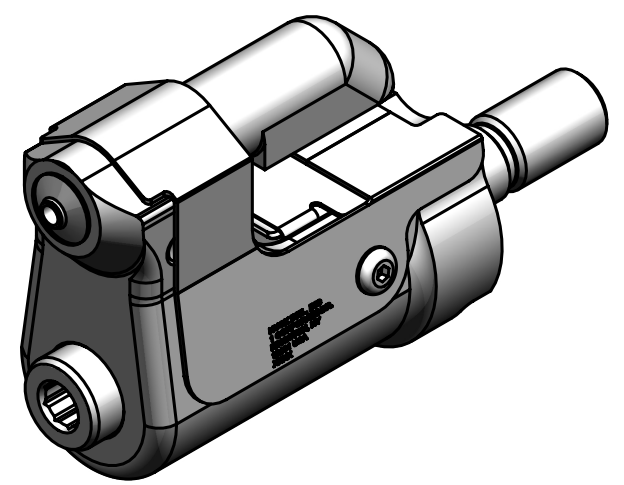
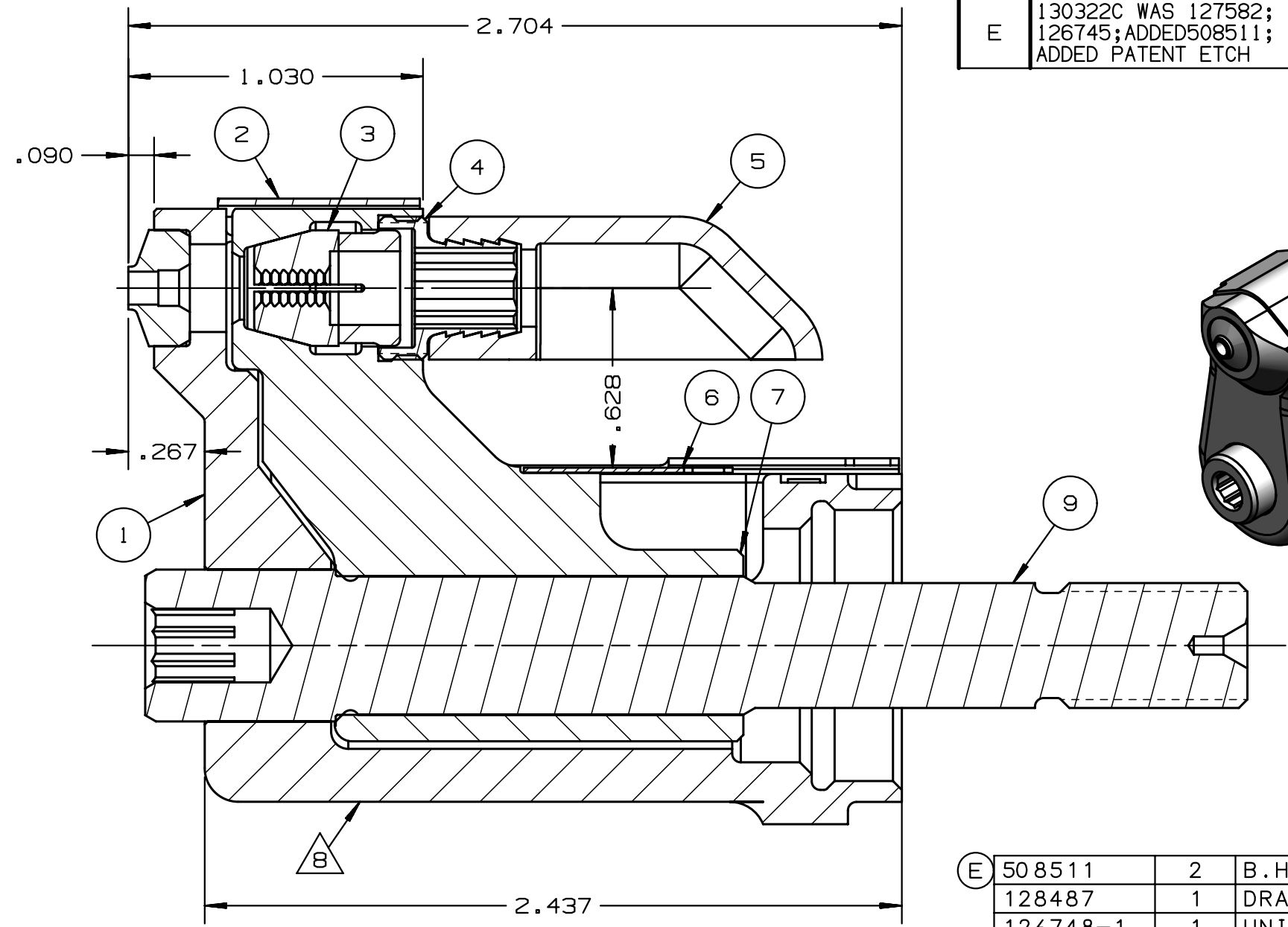
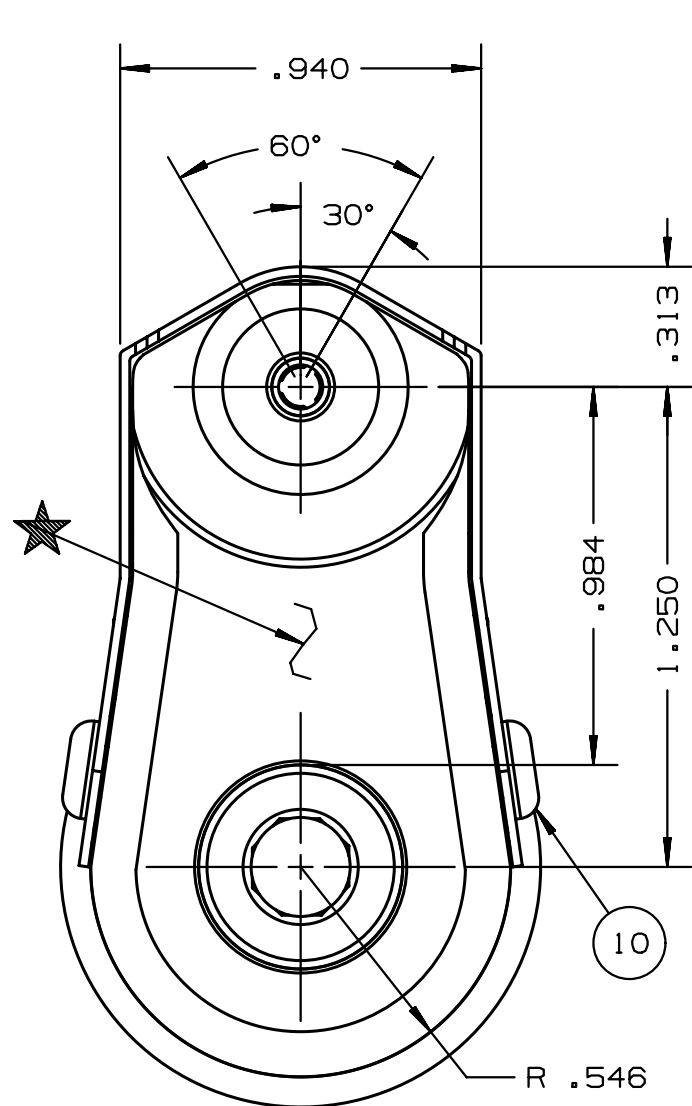


REV	DESCRIPTION	DET	DATE
C	ADDED NOTE 7.	MK	10/19/09
D	128513C WAS 128623C. ADDED 128487	JJC	07/30/12
E	130322C WAS 127582; 130326 WAS 126745; ADDED 508511; ADDED VIEW; ADDED PATENT ETCH	HKS	7/22/13



- NOTES:
- 1 MAXIMUM RECOMMENDED STROKE: .500
 - 2 FOR USE WITH THE 225/245 TOOL, USE ATTACHMENT P/N 119400-1 AND STROKE LIMITER 118362
 - 3 FOR USE WITH 2500 TOOL, USE ATTACHMENT P/N 119400-1 AND STROKE LIMITER KIT 119888
 - 4 FOR OTHER TOOLS AND/OR OTHER TOOL AND STROKE COMBINATIONS, CONSULT ENGINEERING DEPARTMENT
 - 5 SHIP WITH STOP 126747
 - 6 SHIP WITH DEFLECTOR 126748-1
 - 7 128623C ASSEMBLY CONSISTS OF 128513C COLLET AND 128487 DRAWBAR.
 - 8 ETCH "U.S. PATENT #6739170" WHERE SHOWN

FOR USE WITH 206-375			
(E) 508511	2	B.H.C.S.	10
128487	1	DRAWBAR	9
126748-1	1	UNITIZED DEFLECTOR	8
128513C	1	COLLET	7
(E) 130326	1	GUARD	6
120095	1	DEFLECTOR	5
122912	1	BARBED RETAINER	4
128081	1	UNITIZED CHUCK JAW	3
(E) 130322C	1	TOP GUARD	2
127117C	1	ANVIL	1
PART NO.	QTY	DESCRIPTION	ITEM

IDENTIFICATION PER SPEC 42-311: ★ ETCH			
ITAR:		HUCK INTERNATIONAL, INC., I.S.D. 1 CORPORATE DR, P.O. BOX 2270 KINGSTON, NEW YORK 12401	
ECCN: EAR99		CLEARANCE NOSE ASSEMBLY -05 BLIND RIVET UNIMATIC	
SCH B#: 8467.99.0190		DET: MVM	CK: DATE: 10/04/04 SCALE: 2:1
HTS: 8467.99.0190		B	99-3716C