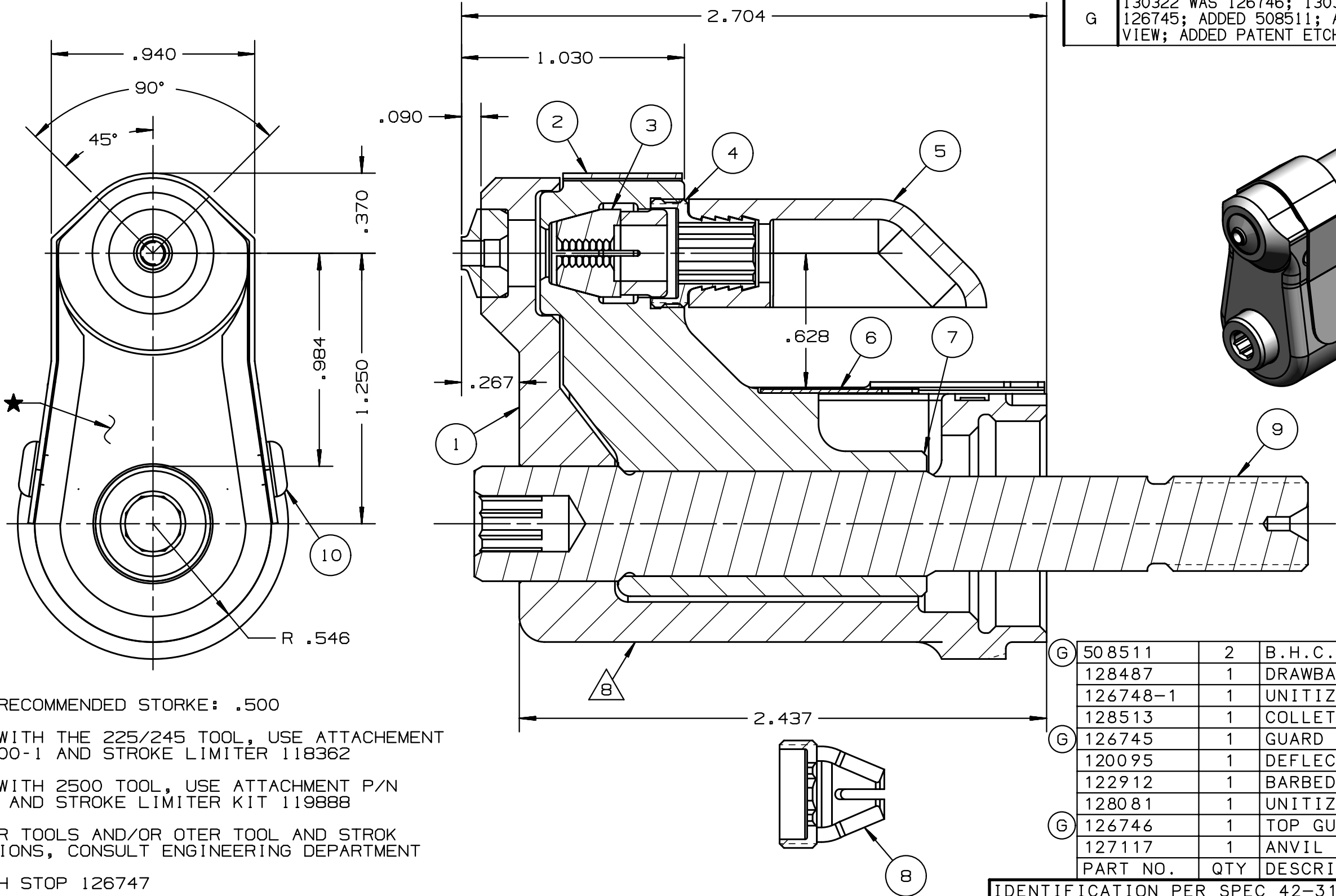


| REV | DESCRIPTION | DET | DATE |
|-----|---|-----|----------|
| E | ADDED NOTE 7. | MK | 10/19/09 |
| F | 128513 WAS 128623. ADDED 128487 | JJC | 07/30/12 |
| G | 130322 WAS 126746; 130326 WAS 126745; ADDED 508511; ADDED VIEW; ADDED PATENT ETCH | HKS | 6/13/13 |



NOTES:

- 1 MAXIMUM RECOMMENDED STORKE: .500
- 2 FOR USE WITH THE 225/245 TOOL, USE ATTACHEMENT P/N 119400-1 AND STROKE LIMITER 118362
- 3 FOR USE WITH 2500 TOOL, USE ATTACHMENT P/N 119400-1 AND STROKE LIMITER KIT 119888
- 4 FOR OTHER TOOLS AND/OR OTER TOOL AND STROK COMBINATIONS, CONSULT ENGINEERING DEPARTMENT
- 5 SHIP WITH STOP 126747
- 6 SHIP WITH DEFLECTOR 126748-1
- 7 128623 ASSEMBLY CONSISTS OF 128513 COLLET AND 128487 DRAWBAR

△ ETCH "U.S. PATENT #6739170" WHERE SHOWN

FOR USE WITH 206-375

| | | | | |
|---|----------|-----|--------------------|------|
| G | 508511 | 2 | B.H.C.S. | 10 |
| | 128487 | 1 | DRAWBAR | 9 |
| | 126748-1 | 1 | UNITIZED DEFLECTOR | 8 |
| | 128513 | 1 | COLLET | 7 |
| G | 126745 | 1 | GUARD | 6 |
| | 120095 | 1 | DEFLECTOR | 5 |
| | 122912 | 1 | BARBED RETAINER | 4 |
| | 128081 | 1 | UNITIZED CHUCK JAW | 3 |
| G | 126746 | 1 | TOP GUARD | 2 |
| | 127117 | 1 | ANVIL | 1 |
| | PART NO. | QTY | DESCRIPTION | ITEM |

| | | | |
|--|--|---|--------------------------|
| IDENTIFICATION PER SPEC 42-311: ★ ETCH | | | |
| ITAR: | | HUCK INTERNATIONAL, INC., I.S.D. | |
| ECCN: EAR99 | | 1 CORPORATE DR, P.O. BOX 2270 KINGSTON, NEW YORK 12401 | |
| SCH B#: 8467.99.0190 | | NOSE ASSEMBLY -05 BLIND RIVET UNIMATIC | |
| HTS: 8467.99.0190 | | DET: MVM CK: | DATE: 6/16/03 SCALE: 2:1 |
| | | B | 99-3716 |