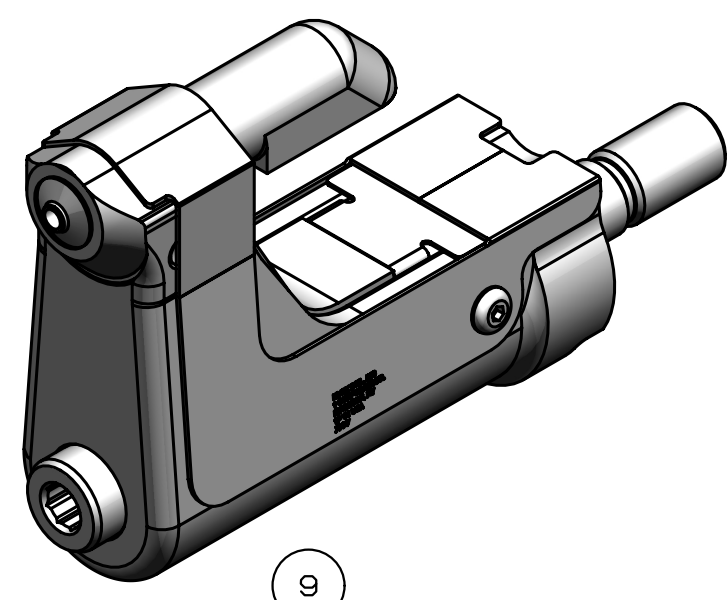
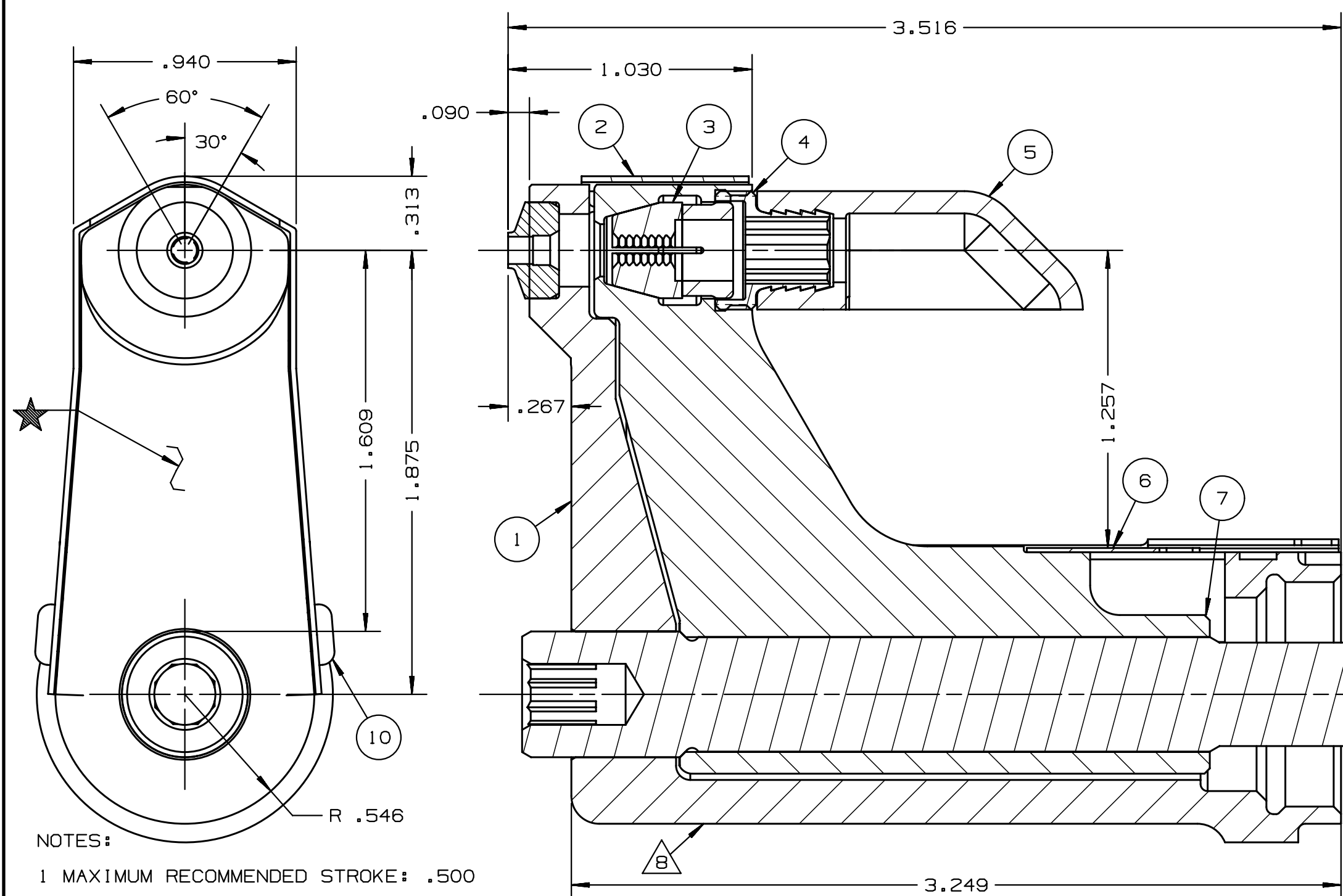




REV	DESCRIPTION	DET	DATE
C	ADDED NOTE 7.	MK	10/19/09
D	128514C WAS 128624C. ADDED 128487	JJC	07/30/12
E	130322-1C WAS 127582; 130326-1 WAS 126745; ADDED 508511; ADDED VIEW; ADDED PATENT ETCH	HKS	7/22/13



- NOTES:
- 1 MAXIMUM RECOMMENDED STROKE: .500
 - 2 FOR USE WITH THE 225/245 TOOL, USE ATTACHMENT P/N 119400-1 AND STROKE LIMITER KIT 118362
 - 3 FOR USE WITH 2500 TOOL, USE ATTACHMENT P/N 119400-1 AND STROKE LIMITER KIT 119888
 - 4 FOR OTHER TOOLS AND/OR OTHER TOOL AND STROKE COMBINATIONS, CONSULT ENGINEERING DEPARTMENT
 - 5 SHIP WITH STOP 126747
 - 6 SHIP WITH DEFLECTOR 126748-1
 - 7 128624C ASSEMBLY CONSISTS OF 128514C COLLET AND 128488 DRAWBAR.
-  ETCH "U.S. PATENT #6739170" WHERE SHOWN

FOR USE WITH 206-375

(E)	508511	2	B.H.C.S.	10
	128488	1	DRAWBAR	9
	126748-1	1	UNITIZED DEFLECTOR	8
	128514C	1	COLLET	7
(E)	130326-1	1	GUARD	6
	120095	1	DEFLECTOR	5
	122912	1	BARBED RETAINER	4
	128081	1	UNITIZED CHUCK JAW	3
(E)	130322-1C	1	TOP GUARD	2
	127118C	1	ANVIL	1
	PART NO.	QTY	DESCRIPTION	ITEM

IDENTIFICATION PER SPEC 42-311:  ETCH			
ITAR:		HUCK INTERNATIONAL, INC., I.S.D. 1 CORPORATE DR., P.O. BOX 2270 KINGSTON, NEW YORK 12401	
ECCN: EAR99		CLEARANCE NOSE ASSEMBLY -05 BLIND RIVET LONG UNIMATIC	
SCH B#: 8467.99.0190		DET: MVM	CK: DATE: 10/05/04 SCALE: 2:1
HTS: 8467.99.0190		B 99-3716-1C	