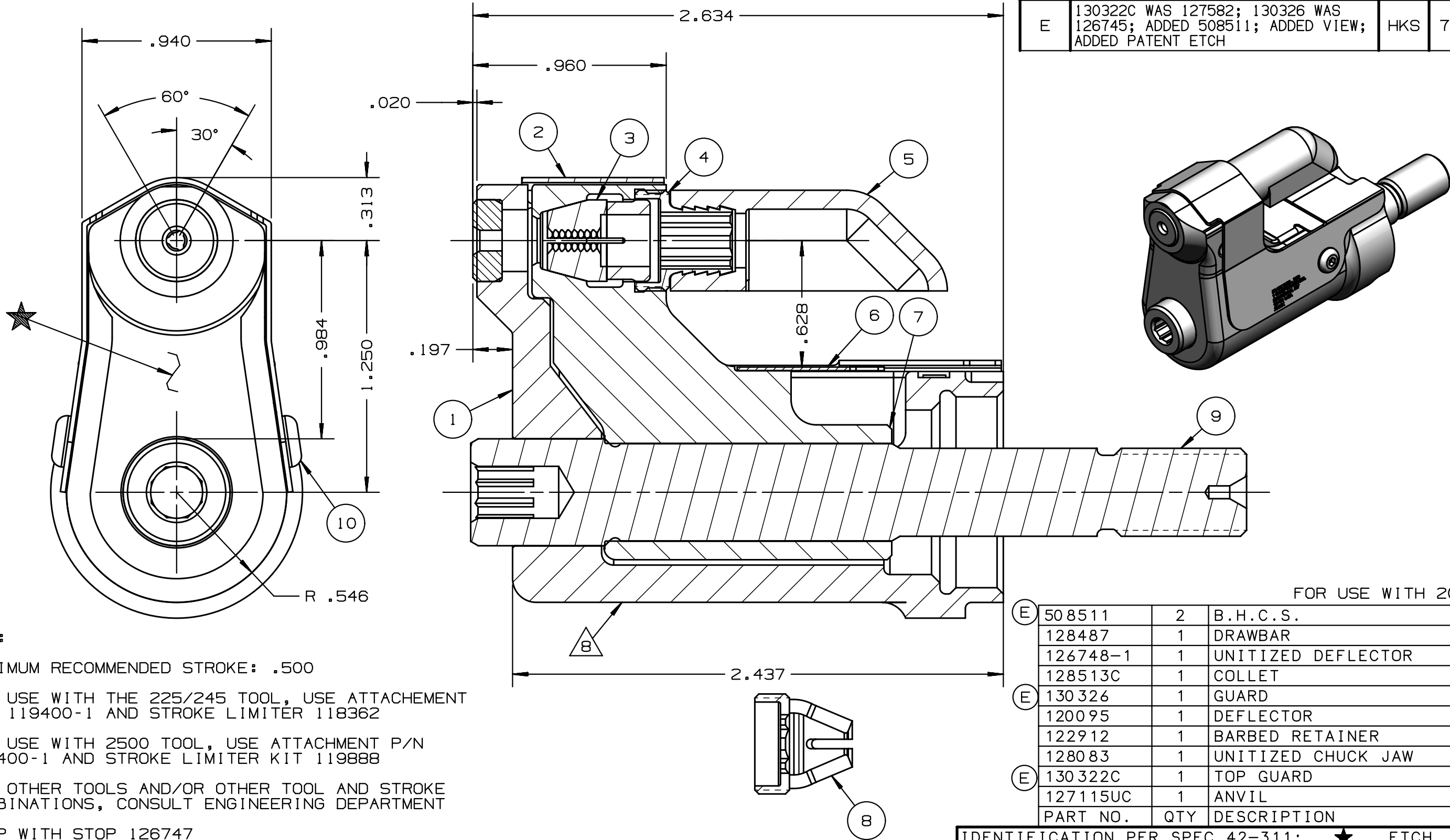


REV	DESCRIPTION	DET	DATE
C	ADDED NOTE 7.	MK	10/16/09
D	128513C WAS 128623C. ADDED 128487	JJC	07/26/12
E	130322C WAS 127582; 130326 WAS 126745; ADDED 508511; ADDED VIEW; ADDED PATENT ETCH	HKS	7/22/13



NOTES:

- 1 MAXIMUM RECOMMENDED STROKE: .500
 - 2 FOR USE WITH THE 225/245 TOOL, USE ATTACHEMENT P/N 119400-1 AND STROKE LIMITER 118362
 - 3 FOR USE WITH 2500 TOOL, USE ATTACHMENT P/N 119400-1 AND STROKE LIMITER KIT 119888
 - 4 FOR OTHER TOOLS AND/OR OTHER TOOL AND STROKE COMBINATIONS, CONSULT ENGINEERING DEPARTMENT
 - 5 SHIP WITH STOP 126747
 - 6 SHIP WITH DEFLECTOR 126748-1
 - 7 128623C ASSEMBLY CONSISTS OF 128513C COLLET AND 128487 DRAWBAR.
- ETCH "U.S. PATENT #6739170" WHERE SHOWN

IDENTIFICATION PER SPEC 42-311: ETCH			
ITAR:	HUCK INTERNATIONAL, INC., I.S.D. 1 CORPORATE DR, P.O. BOX 2270 KINGSTON, NEW YORK 12401		
ECCN: EAR99	CLEARANCE NOSE ASSEMBLY -04 FLAT BR UNIMATIC		
SCH B#: 8467.99.0190	DET: MVM	CK:	DATE: 10/04/04 SCALE: 2:1
HTS: 8467.99.0190	B 99-3715UC		