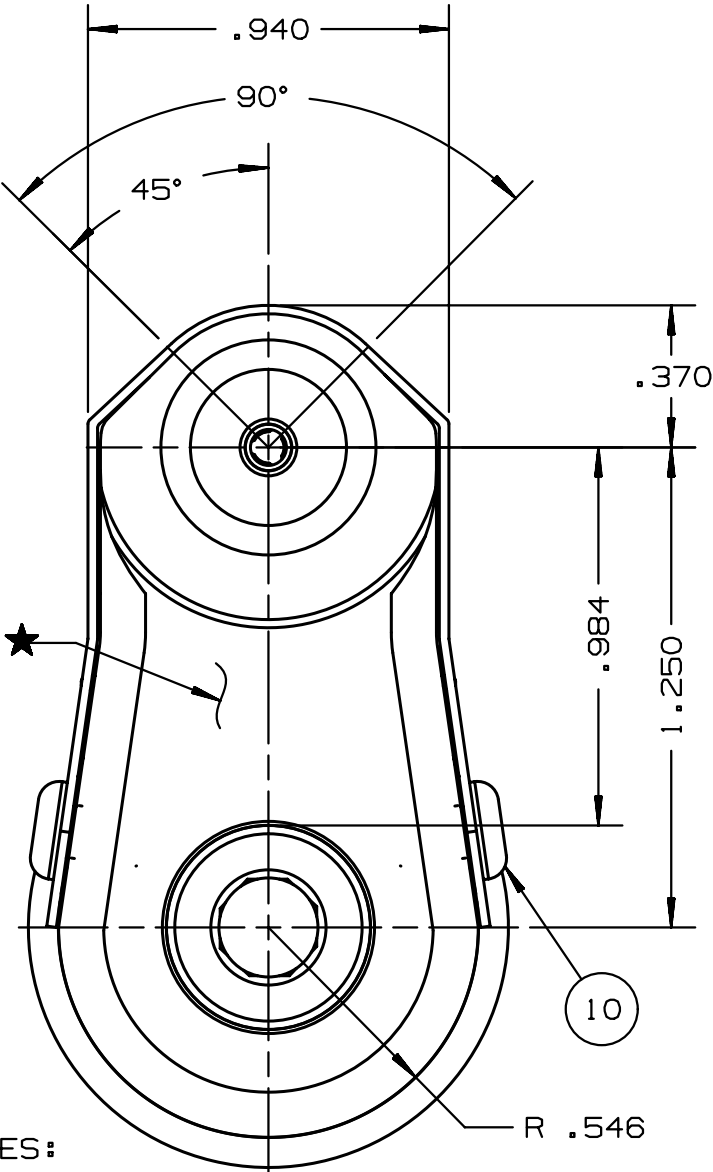



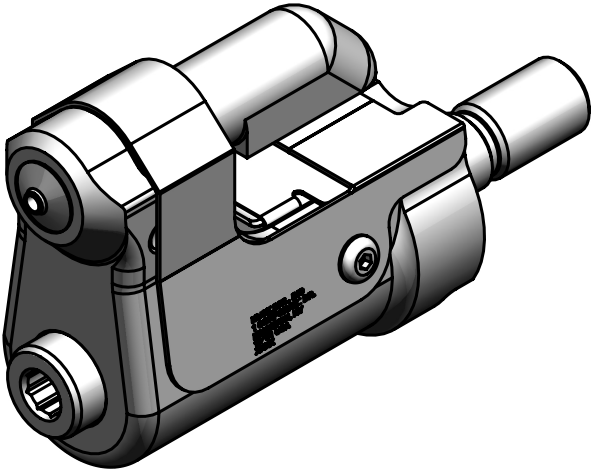
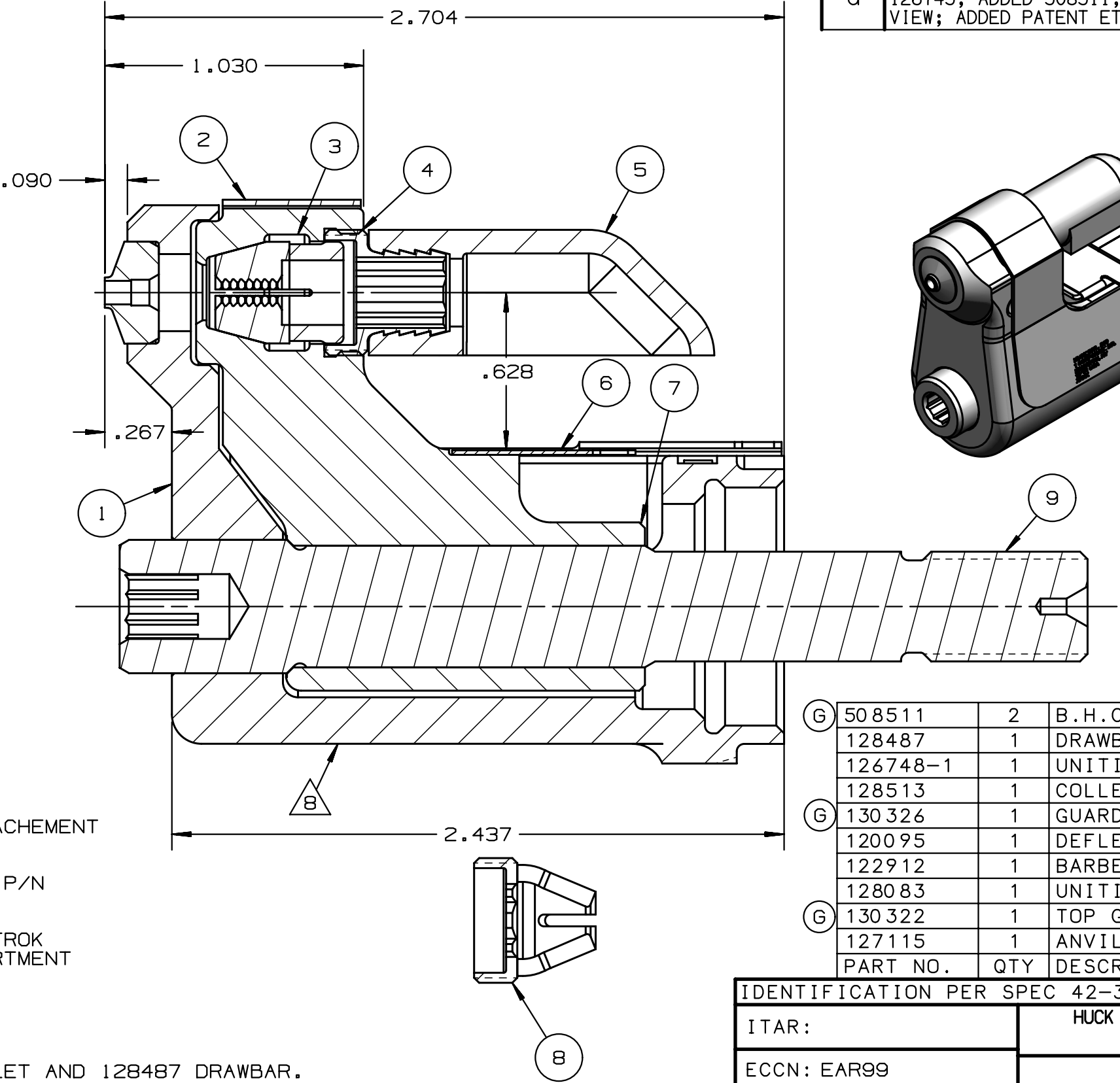
| REV | DESCRIPTION | DET | DATE |
|-----|-----------------------------------------------------------------------------------|-----|----------|
| E | ADDED NOTE 7. ADDED CENTERLINE DIMENSION | MK | 10/16/09 |
| F | 128513 WAS 128623. ADDED 128487 | JJC | 07/26/12 |
| G | 130322 WAS 126746; 130326 WAS 126745; ADDED 508511; ADDED VIEW; ADDED PATENT ETCH | HKS | 6/13/13 |




NOTES:

- 1 MAXIMUM RECOMMENDED STROKE: .500
- 2 FOR USE WITH THE 225/245 TOOL, USE ATTACHMENT P/N 119400-1 AND STROKE LIMITER 118362
- 3 FOR USE WITH 2500 TOOL, USE ATTACHMENT P/N 119400-1 AND STROKE LIMITER KIT 119888
- 4 FOR OTHER TOOLS AND/OR OTER TOOL AND STROK COMBINATIONS, CONSULT ENGINEERING DEPARTMENT
- 5 SHIP WITH STOP 126747
- 6 SHIP WITH DEFLECTOR 126748-1
- 7 128623 ASSEMBLY CONSISTS OF 128513 COLLET AND 128487 DRAWBAR.

 ETCH "U.S. PATENT #6739170" WHERE SHOWN



| FOR USE WITH 206-375 | | | |
|----------------------|-----|--------------------|------|
| G 508511 | 2 | B.H.C.S. | 10 |
| 128487 | 1 | DRAWBAR | 9 |
| 126748-1 | 1 | UNITIZED DEFLECTOR | 8 |
| 128513 | 1 | COLLET | 7 |
| G 130326 | 1 | GUARD | 6 |
| 120095 | 1 | DEFLECTOR | 5 |
| 122912 | 1 | BARBED RETAINER | 4 |
| 128083 | 1 | UNITIZED CHUCK JAW | 3 |
| G 130322 | 1 | TOP GUARD | 2 |
| 127115 | 1 | ANVIL | 1 |
| PART NO. | QTY | DESCRIPTION | ITEM |

| | | | |
|----------------------------------------------------------------------------------------------------------------------------|-----------------------------------------------------------------------------------------------|---------|--------------------------|
| IDENTIFICATION PER SPEC 42-311:  ETCH | | | |
| ITAR: | HUCK INTERNATIONAL, INC., I.S.D. 1 CORPORATE DR, P.O. BOX 2270 KINGSTON, NEW YORK 12401 | | |
| ECCN: EAR99 | NOSE ASSEMBLY -04 BLIND RIVET UNIMATIC | | |
| SCH B#: 8467.99.0190 | DET: MVM | CK: | DATE: 6/16/03 SCALE: 2:1 |
| HTS: 8467.99.0190 | B | 99-3715 | |