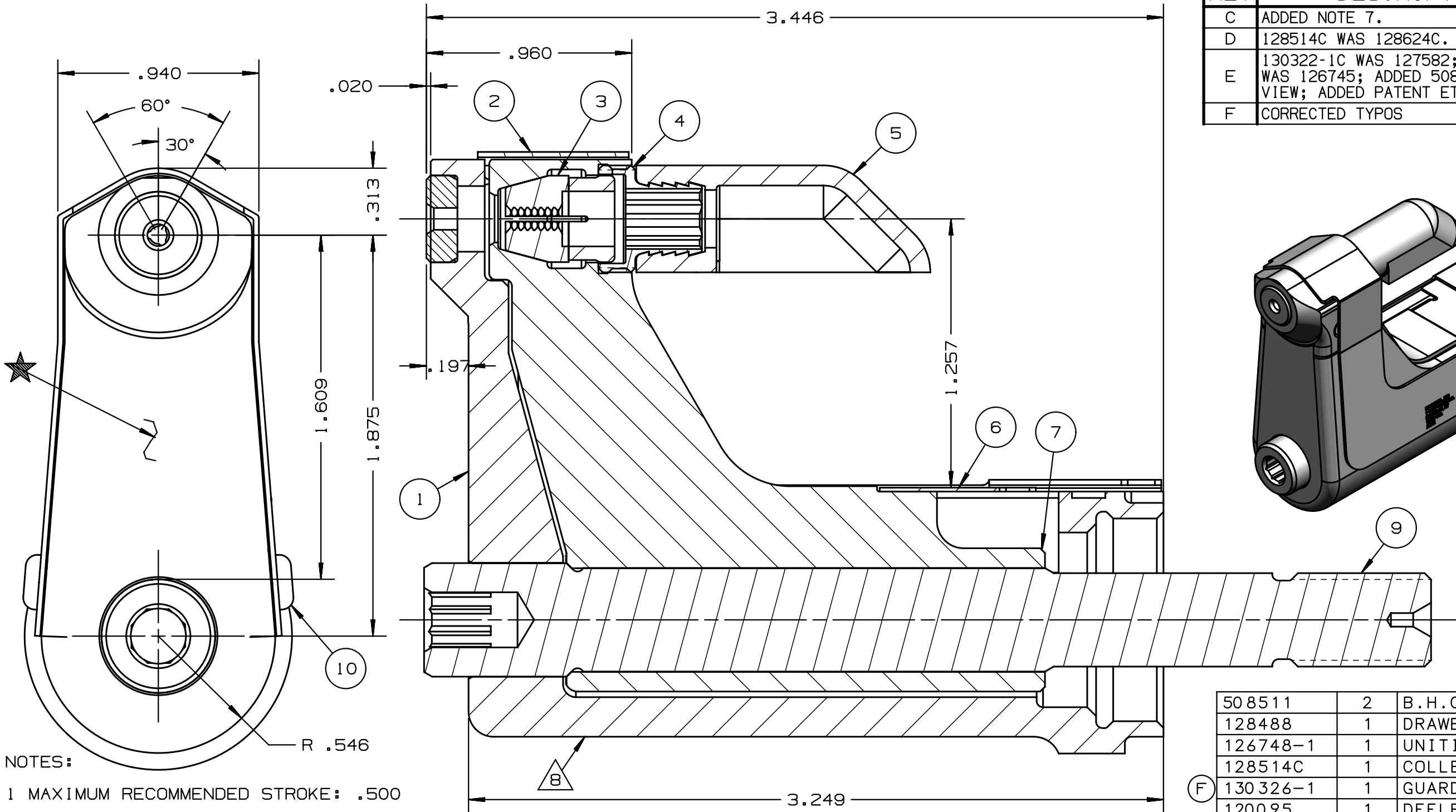
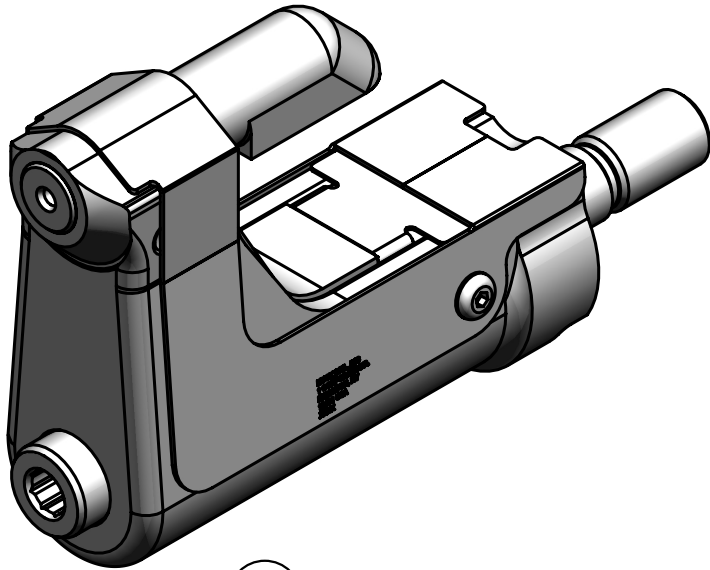


REV	DESCRIPTION	DET	DATE
C	ADDED NOTE 7.	MK	10/16/09
D	128514C WAS 128624C. ADDED 128488	JJC	07/26/12
E	130322-1C WAS 127582; 130326-1 WAS 126745; ADDED 508511; ADDED VIEW; ADDED PATENT ETCH	HKS	7/22/13
F	CORRECTED TYPOS	HKS	11/15/13



- NOTES:
- 1 MAXIMUM RECOMMENDED STROKE: .500
  - 2 FOR USE WITH THE 225/245 TOOL, USE ATTACHMENT P/N 119400-1 AND STROKE LIMITER KIT 118362
  - 3 FOR USE WITH 2500 TOOL, USE ATTACHMENT P/N 119400-1 AND STROKE LIMITER KIT 119888
  - 4 FOR OTHER TOOLS AND/OR OTHER TOOL AND STROKE COMBINATIONS, CONSULT ENGINEERING DEPARTMENT
  - 5 SHIP WITH STOP 126747
  - 6 SHIP WITH DEFLECTOR 126748-1
  - 7 128624C ASSEMBLY CONSISTS OF 128514C COLLET AND 128488.
  - 8 ETCH "U.S. PATENT #6739170" WHERE SHOWN



FOR USE WITH 206-375			
508511	2	B.H.C.S.	10
128488	1	DRAWBAR	9
126748-1	1	UNITIZED DEFLECTOR	8
128514C	1	COLLET	7
130326-1	1	GUARD	6
120095	1	DEFLECTOR	5
122912	1	BARBED RETAINER	4
128083	1	UNITIZED CHUCK JAW	3
130322-1C	1	TOP GUARD	2
127116UC	1	ANVIL	1
PART NO.	QTY	DESCRIPTION	ITEM

IDENTIFICATION PER SPEC 42-311: ★ ETCH			
ITAR:	HUCK INTERNATIONAL, INC., I.S.D. 1 CORPORATE DR, P.O. BOX 2270 KINGSTON, NEW YORK 12401		
ECCN: EAR99	CLEARANCE NOSE ASSEMBLY -04 FLAT BR LONG UNIMATIC		
SCH B#: 8467.99.0190	DET: MVM	CK:	DATE: 10/4/04 SCALE: 2:1
HTS: 8467.99.0190	B 99-3715-1UC		