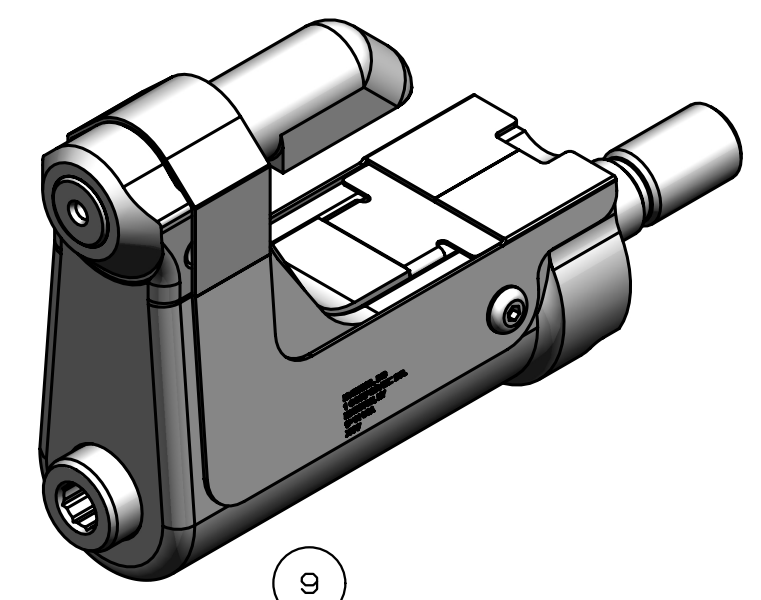


- NOTES:
- 1 MAXIMUM RECOMMENDED STROKE: .500
  - 2 FOR USE WITH THE 225/245 TOOL, USE ATTACHMENT P/N 119400-1 AND STROKE LIMITER KIT 119362
  - 3 FOR USE WITH 2500 TOOL, USE ATTACHMENT P/N 119400-1 AND STROKE LIMITER KIT 119888
  - 4 FOR OTHER TOOLS AND/OR OTHER TOOL AND STROKE COMBINATIONS, CONSULT ENGINEERING DEPARTMENT
  - 5 SHIP WITH STOP 126747
  - 6 SHIP WITH DEFLECTOR 126748-1
  - 7 128624 ASSEMBLY CONSISTS OF 128514 COLLET AND 128488 DRAWBAR.
  - 8 ETCH "U.S. PATENT #6739170" WHERE SHOWN

REV	DESCRIPTION	DET	DATE
E	ADDED NOTE 7.	MK	10/16/09
F	128514 WAS 128624. ADDED 128488	JJC	07/26/12
G	130322-1 WAS 126746; 130326-1 WAS 126745; ADDED 508511; ADDED VIEW; ADDED PATENT ETCH	HKS	7/22/13



FOR USE WITH 206-375			
G 508511	2	B.H.C.S.	10
128488	1	DRAWBAR	9
126748-1	1	UNITIZED DEFLECTOR	8
128514	1	COLLET	7
G 130326-1	1	GUARD	6
120095	1	DEFLECTOR	5
122912	1	BARBED RETAINER	4
128083	1	UNITIZED CHUCK JAW	3
G 130322-1	1	TOP GUARD	2
127116U	1	ANVIL	1
PART NO.	QTY	DESCRIPTION	ITEM

IDENTIFICATION PER SPEC 42-311: ★ ETCH			
ITAR:		HUCK INTERNATIONAL, INC., I.S.D. 1 CORPORATE DR, P.O. BOX 2270 KINGSTON, NEW YORK 12401	
ECCN: EAR99		NOSE ASSEMBLY -04 FLAT BLIND RIVET UNIMATIC LONG	
SCH B#: 8467.99.0190		DET: MVM	CK: DATE: 10/29/02 SCALE: 2:1
HTS: 8467.99.0190		B	99-3715-1U