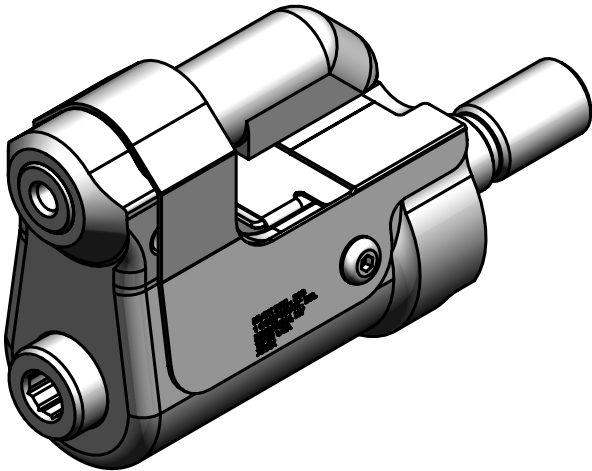
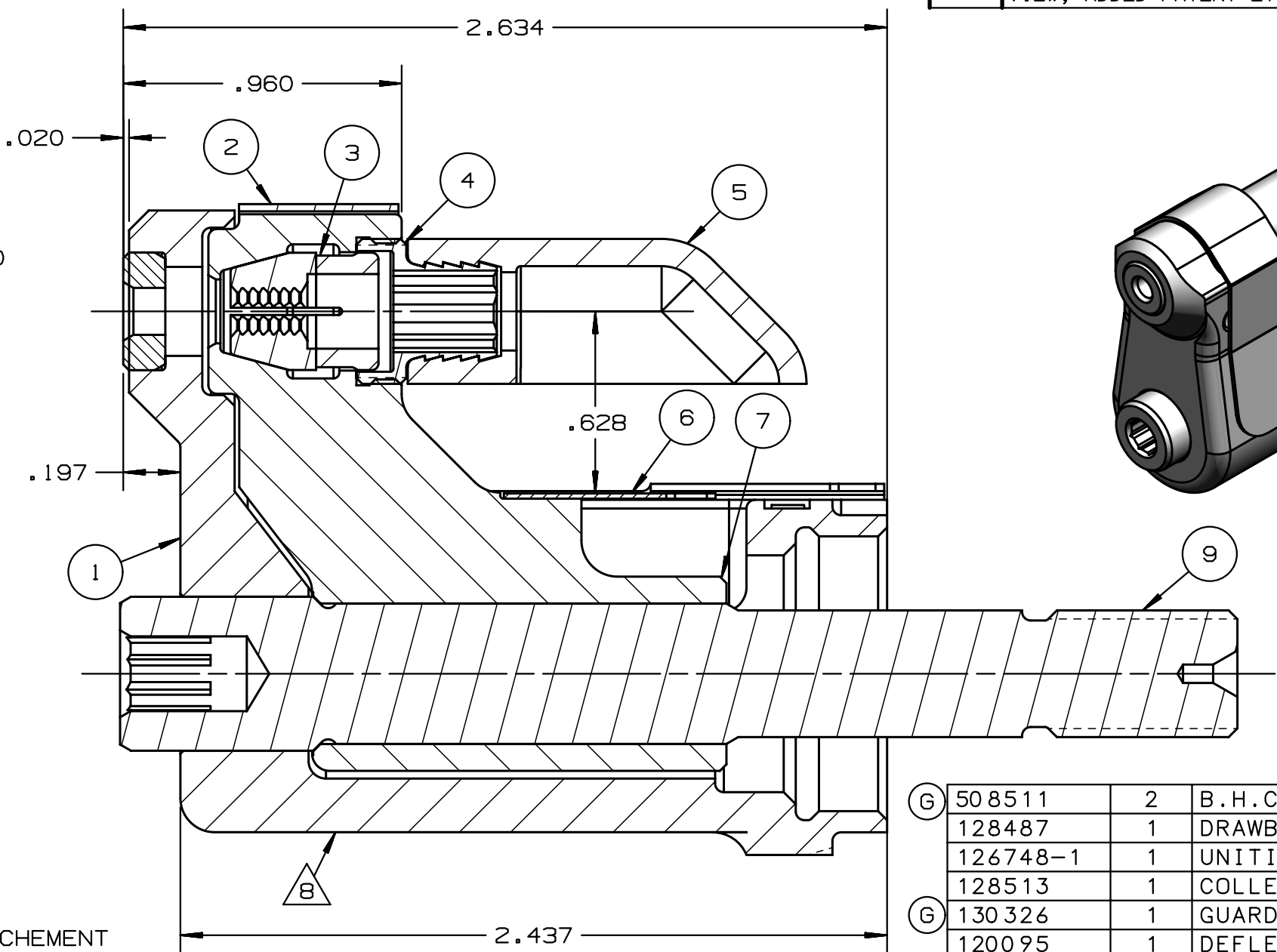
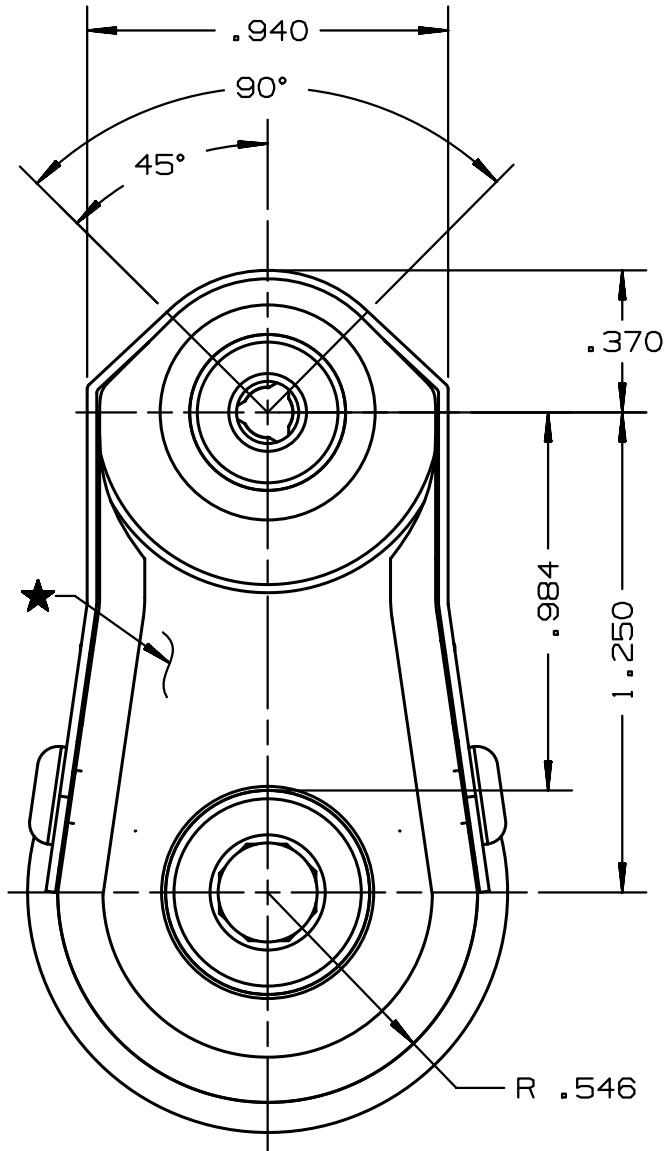



REV	DESCRIPTION	DET	DATE
E	ADDED NOTE 7. ADDED CENTERLINE DIMENSION	MK	10/13/09
F	128513 WAS 128623. ADDED 128487	JJC	07/25/12
G	130322 WAS 126746; 130326 WAS 126745; ADDED 508511; ADDED VIEW; ADDED PATENT ETCH	HKS	7/22/13




NOTES:

- 1 MAXIMUM RECOMMENDED STROKE: .500
- 2 FOR USE WITH THE 225/245 TOOL, USE ATTACHEMENT P/N 119400-1 AND STROKE LIMITER 118362
- 3 FOR USE WITH 2500 TOOL, USE ATTACHEMENT P/N 119400-1 AND STROKE LIMITER KIT 119888
- 4 FOR OTHER TOOLS AND/OR OTER TOOL AND STROK COMBINATIONS, CONSULT ENGINEERING DEPARTMENT
- 5 SHIP WITH STOP 126747
- 6 SHIP WITH DEFLECTOR 126748-1
- 7 128623 ASSEMBLY CONSISTS OF 128513 COLLET AND 128487 DRAWBAR.

 ETCH "U.S. PATENT #6739170" WHERE SHOWN

FOR USE WITH 206-375			
(G) 508511	2	B.H.C.S.	10
128487	1	DRAWBAR	9
126748-1	1	UNITIZED DEFLECTOR	8
128513	1	COLLET	7
(G) 130326	1	GUARD	6
120095	1	DEFLECTOR	5
122912	1	BARBED RETAINER	4
128077	1	UNITIZED CHUCK JAW	3
(G) 130322	1	TOP GUARD	2
127125W	1	ANVIL	1
PART NO.	QTY	DESCRIPTION	ITEM

IDENTIFICATION PER SPEC 42-311:  ETCH			
ITAR:	HUCK INTERNATIONAL, INC., I.S.D. 1 CORPORATE DR, P.O. BOX 2270 KINGSTON, NEW YORK 12401		
ECCN: EAR99	NOSE ASSEMBLY -06 FLAT BLIND BOLT		
SCH B#: 8437.99.0190	DET: MVM	CK:	DATE: 6/16/03 SCALE: 2:1
HTS: 8437.99.0190	B 99-3713W		