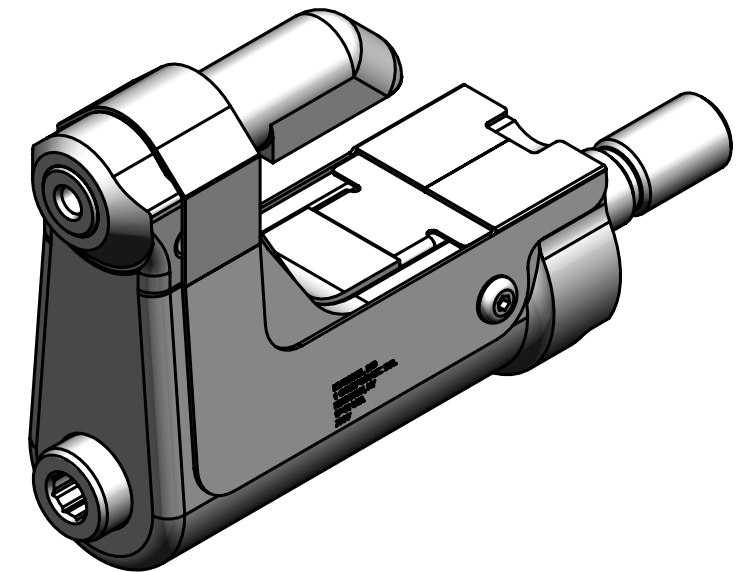


NOTES:

- 1 MAXIMUM RECOMMENDED STROKE: .500
- 2 FOR USE WITH THE 225/245 TOOL, USE ATTACHMENT P/N 119400-1 AND STROKE LIMITER KIT 119362
- 3 FOR USE WITH 2500 TOOL, USE ATTACHMENT P/N 119400-1 AND STROKE LIMITER KIT 119888
- 4 FOR OTHER TOOLS AND/OR OTHER TOOL AND STROKE COMBINATIONS, CONSULT ENGINEERING DEPARTMENT
- 5 SHIP WITH STOP 126747
- 6 SHIP WITH DEFLECTOR 126748-1
- 7 128624 ASSEMBLY CONSISTS OF 128514 COLLET AND 128488 DRAWBAR.


 ETCH "U.S. PATENT #6739170" WHERE SHOWN

REV	DESCRIPTION	DET	DATE
E	ADDED NOTE 7. ADDED CENTERLINE DIMENSION	MK	10/13/09
F	128514 WAS 128624. ADDED 128487	JJC	07/25/12
G	130322-1 WAS 126746; 130326-1 WAS 126745; ADDED 508511; ADDED VIEW; ADDED PATENT ETCH	HKS	7/22/13



FOR USE WITH 206-375

G	508511	2	B.H.C.S.	9
	126748-1	1	UNITIZED DEFLECTOR	8
	128624	1	COLLET & DRAWBAR ASSY	7
G	130326-1	1	GUARD	6
	120095	1	DEFLECTOR	5
	122912	1	BARBED RETAINER	4
	128077	1	UNITIZED CHUCK JAW	3
G	130322-1	1	TOP GUARD	2
	127126W	1	ANVIL	1
PART NO.		QTY	DESCRIPTION	ITEM

IDENTIFICATION PER SPEC 42-311:  ETCH			
ITAR:		HUCK INTERNATIONAL, INC., I.S.D. 1 CORPORATE DR, P.O. BOX 2270 KINGSTON, NEW YORK 12401	
ECCN: EAR99		NOSE ASSEMBLY -06 FLAT BLIND BOLT LONG	
SCH B#: 8467.99.0190		DET: MVM	CK: <span></span> DATE: 10/29/02 SCALE: 2:1
HTS: 8467.99.0190		<b>B</b> <b>99-3713-1W</b>	