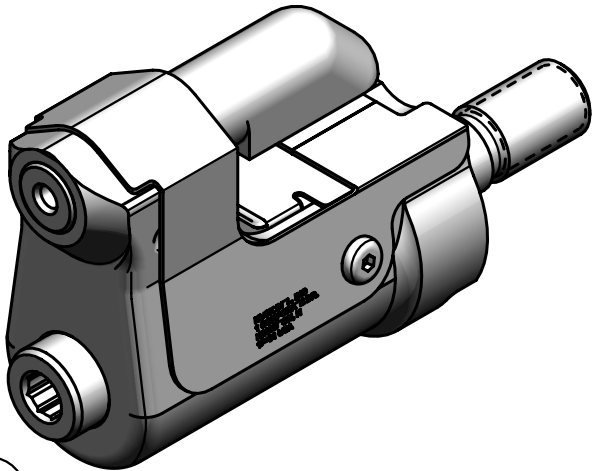
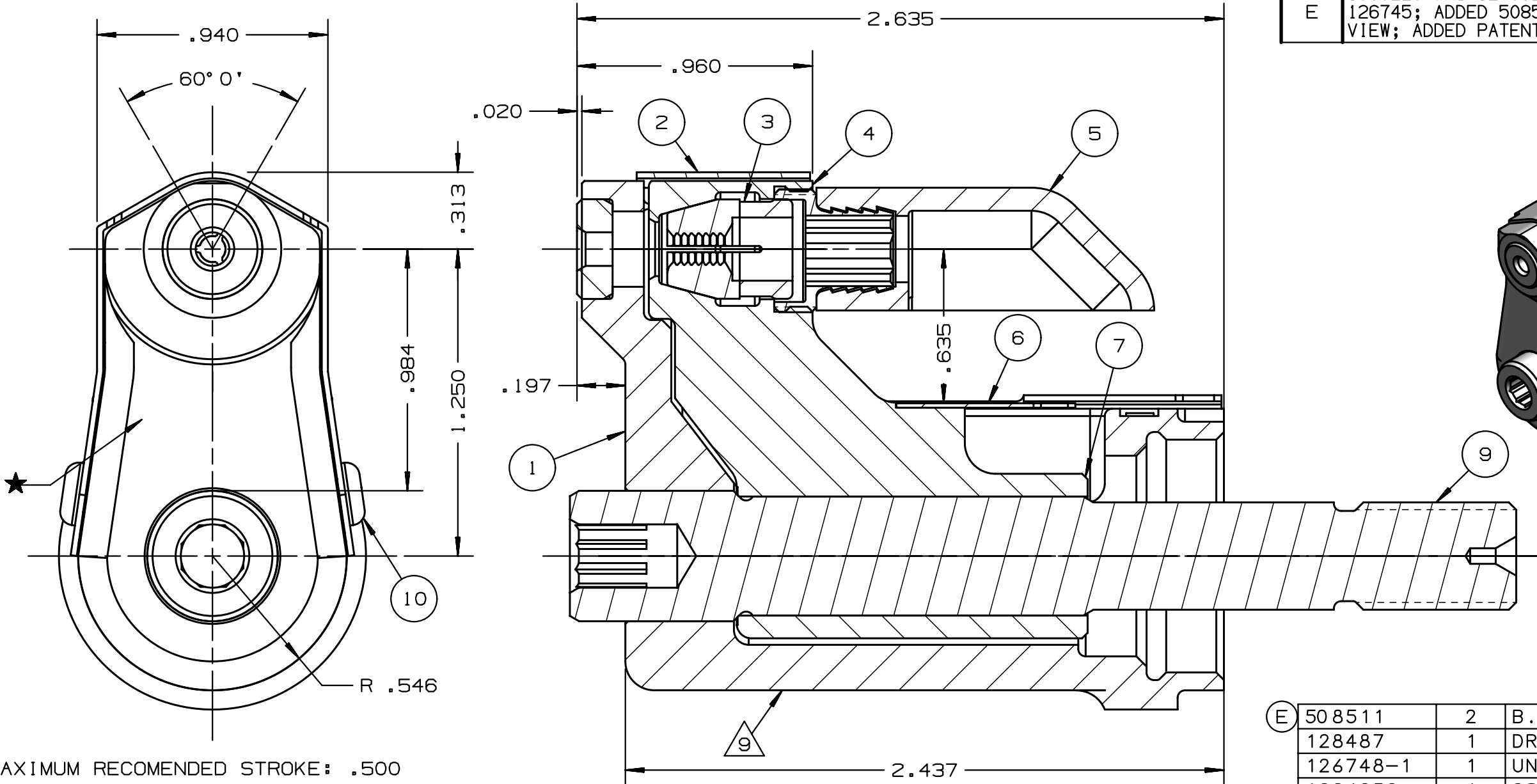


REV	DESCRIPTION	DET	DATE
C	ADDED NOTE 7. ADDED CENTERLINE DIMENSION	MK	10/12/09
D	128513C WAS 128623C; ADDED 128487	JJC	07/25/12
E	130322C WAS 127582; 130326 WAS 126745; ADDED 508511; ADDED VIEW; ADDED PATENT ETCH	HKS	7/22/13



NOTES:

- 1 MAXIMUM RECOMENDED STROKE: .500
- 2 FOR USE WITH THE 225/245 TOOL, USE ATTACHMENT P/N 119400-1 AND STROKE LIMITER KIT 118362.
- 3 FOR USE WITH THE 2500 TOOL, USE ATTACHMENT P/N 119400-1 AND STROKE LIMITER KIT 119888.
- 4 FOR OTHER TOOLS AND/OR OTHER TOOL AND STROKE COMBINATIONS, CONSULT ENGINEERIGN DEPARTMENT.
- 5 SHIP WITH STOP 126747.
- 6 SHIP WITH DEFLECTOR 126748-1.
- 7 128623C ASSEMBLY CONSISTS OF 128513C COLLET AND 128487 DRAWBAR.
- 8 ETCH "U.S. PATENT #6739170" WHERE SHOWN

FOR USE WITH 206-375

(E) 508511	2	B.H.C.S.	10
128487	1	DRAWBAR	9
126748-1	1	UNITIZED DEFLECTOR	8
128623C	1	COLLET & DRAWBAR ASSY	7
(E) 126745	1	GUARD	6
120095	1	DEFLECTOR	5
122912	1	BARBED RETAINER	4
128082	1	UNITIZED CHUCK JAW	3
(E) 127582	1	TOP GUARD	2
127123WC	1	ANVIL	1
PART NO.	QTY	DESCRIPTION	ITEM

IDENTIFICATION PER SPEC 42-311: ★ ETCH			
ITAR:	HUCK INTERNATIONAL, INC., I.S.D. 1 CORPORATE DR, P.O. BOX 2270 KINGSTON, NEW YORK 12401		
ECCN: EAR99	CLEARANCE NOSE ASSEMBLY -05 FLAT BLIND BOLT		
SCH B#: 8467.99.0190	DET: CHR	CK:	DATE: 07/27/04 SCALE: 2:1
HTS: 8467.99.0190	B	99-3712WC	