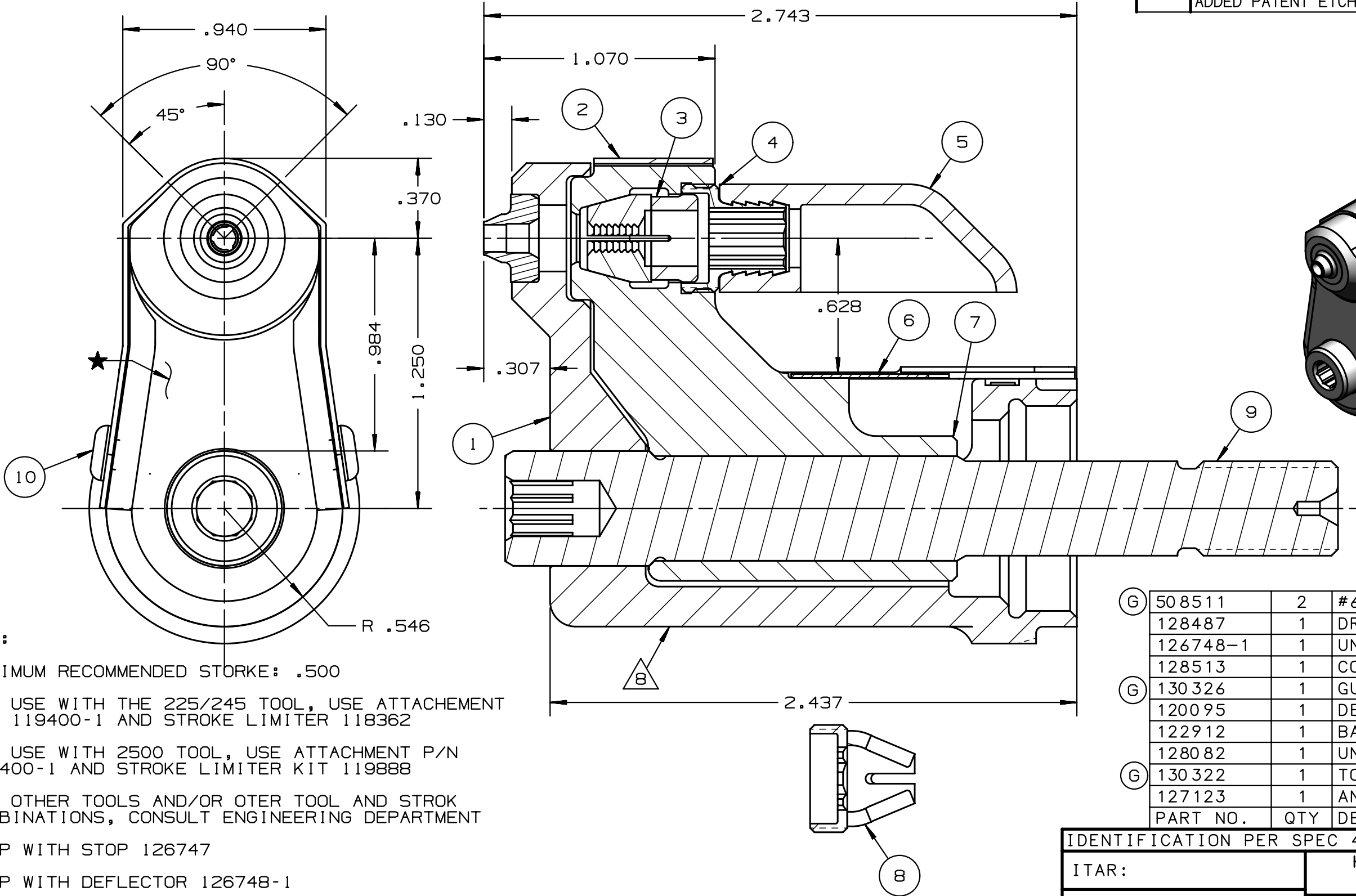


REV	DESCRIPTION	DET	DATE
E	ADDED NOTE 7. ADDED CENTERLINE DIMENSION	MK	10/08/09
F	128513 WAS 128623. ADDED 128487	JJC	07/25/12
G	ADDED 508511, 130322 WAS 126746, 130326 WAS 126745; ADDED VIEW; ADDED PATENT ETCH	NDG	06/03/13



NOTES:

- 1 MAXIMUM RECOMMENDED STORKE: .500
- 2 FOR USE WITH THE 225/245 TOOL, USE ATTACHEMENT P/N 119400-1 AND STROKE LIMITER 118362
- 3 FOR USE WITH 2500 TOOL, USE ATTACHMENT P/N 119400-1 AND STROKE LIMITER KIT 119888
- 4 FOR OTHER TOOLS AND/OR OTER TOOL AND STROK COMBINATIONS, CONSULT ENGINEERING DEPARTMENT
- 5 SHIP WITH STOP 126747
- 6 SHIP WITH DEFLECTOR 126748-1
- 7 128623 ASSEMBLY CONSISTS OF 128513 COLLET AND 128487 DRAWBAR

⚠ ETCH "U.S. PATENT #6739170" WHERE SHOWN

FOR USE WITH 206-375

ⓐ	508511	2	#6-32 B.H.C.S.	10
	128487	1	DRAWBAR	9
	126748-1	1	UNITIZED DEFLECTOR	8
	128513	1	COLLET	7
ⓐ	130326	1	GUARD	6
	120095	1	DEFLECTOR	5
	122912	1	BARBED RETAINER	4
	128082	1	UNITIZED CHUCK JAW	3
ⓐ	130322	1	TOP GUARD	2
	127123	1	ANVIL	1
	PART NO.	QTY	DESCRIPTION	ITEM

IDENTIFICATION PER SPEC 42-311: ★ ETCH			
ITAR:	HUCK INTERNATIONAL, INC., I.S.D. 1 CORPORATE DR, P.O. BOX 2270 KINGSTON, NEW YORK 12401		
ECCN: EAR99	NOSE ASSEMBLY -05 BLIND BOLT		
SCH B#: 8467.99.0190	DET: MVM	CK:	DATE: 6/16/03 SCALE: 2:1
HTS: 8467.99.0190	B	99-3712	