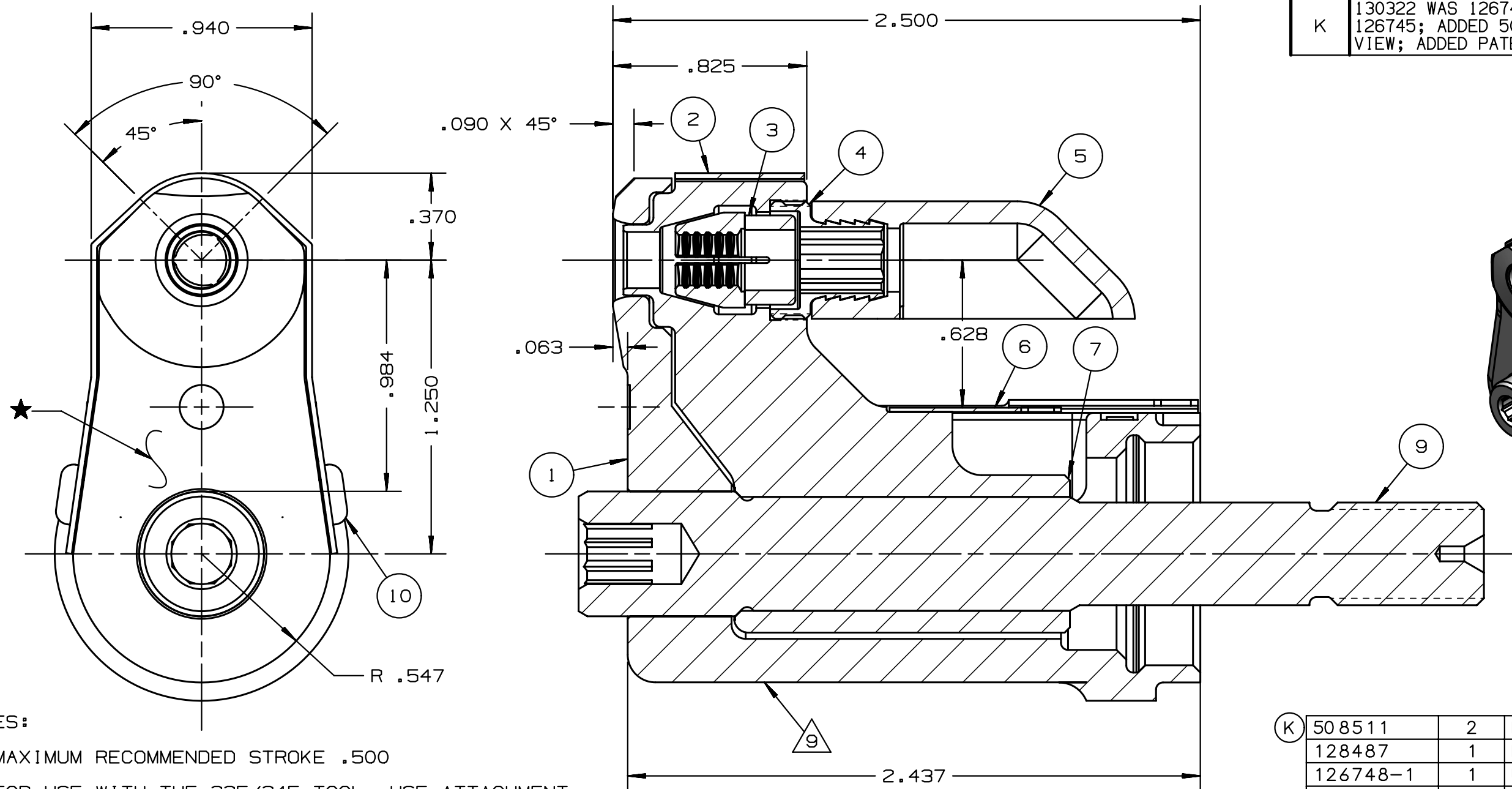


REV	DESCRIPTION	DET	DATE
G	CORRECTED ITEM FOR PART NUMBER TO BE 122912; WAS 122727	NDG	10/13/11
H	ITEM 3, 130056 WAS 128072	EL	11/14/11
J	128519 WAS 128629. ADDED 128487.	JJC	07/25/12
K	130322 WAS 126746; 130326 WAS 126745; ADDED 508511; ADDED VIEW; ADDED PATENT ETCH	HKS	6/13/13



NOTES:

- 1 MAXIMUM RECOMMENDED STROKE .500
- 2 FOR USE WITH THE 225/245 TOOL, USE ATTACHMENT P/N 119400-1 AND STROKE LIMITER 118362
- 3 FOR USE WITH 2500, USE ATTACHMENT P/N 119400-1 AND STROKE LIMITER KIT 119888
- 4 FOR OTHER TOOLS AND/OR OTHER TOOL AND STROKE COMBINATIONS, CONSULT ENGINEERING DEPARTMENT
- 5 SHIP WITH STOP 126747
- 6 SHIP WITH DEFLECTOR 126748-1
- 7 SHIP (2) .030 SHIMS 128290 REFERENCE PB563 FOR PROPER USE.
- 8 128629 ASSEMBLY CONSISTS OF 128519 COLLET AND 128487 DRAWBAR.
- 9 ETCH "U.S. PATENT #6739170" WHERE SHOWN

(K)	508511	2	B.H.C.S.	10
	128487	1	DRAWBAR	9
	126748-1	1	UNITIZED DEFLECTOR	8
	128519	1	COLLET	7
(K)	130326	1	GUARD	6
	120095	1	DEFLECTOR	5
	122912	1	BARBED RETAINER	4
	130056	1	UNITIZED CHUCK JAW	3
(K)	130322	1	TOP GUARD	2
	127089	1	ANVIL	1
	PART NO.	QTY	DESCRIPTION	ITEM

IDENTIFICATION PER SPEC 42-311: ★ PERMANENT		HUCK INTERNATIONAL, INC., I.S.D 1 CORPORATE DR KINGSTON, NEW YORK 12401		
ITAR/ECCN: EAR99		NOSE ASSEMBLY -06MM LGP		
SCH B#: 8467.99.0190		FINAL ASSY: FOR USE WITH 206-375		
HTS: 8467.99.0190		ENG: NDG	CK:	DATE: 10/15/02 SCALE: 2:1
		B 99-3711		