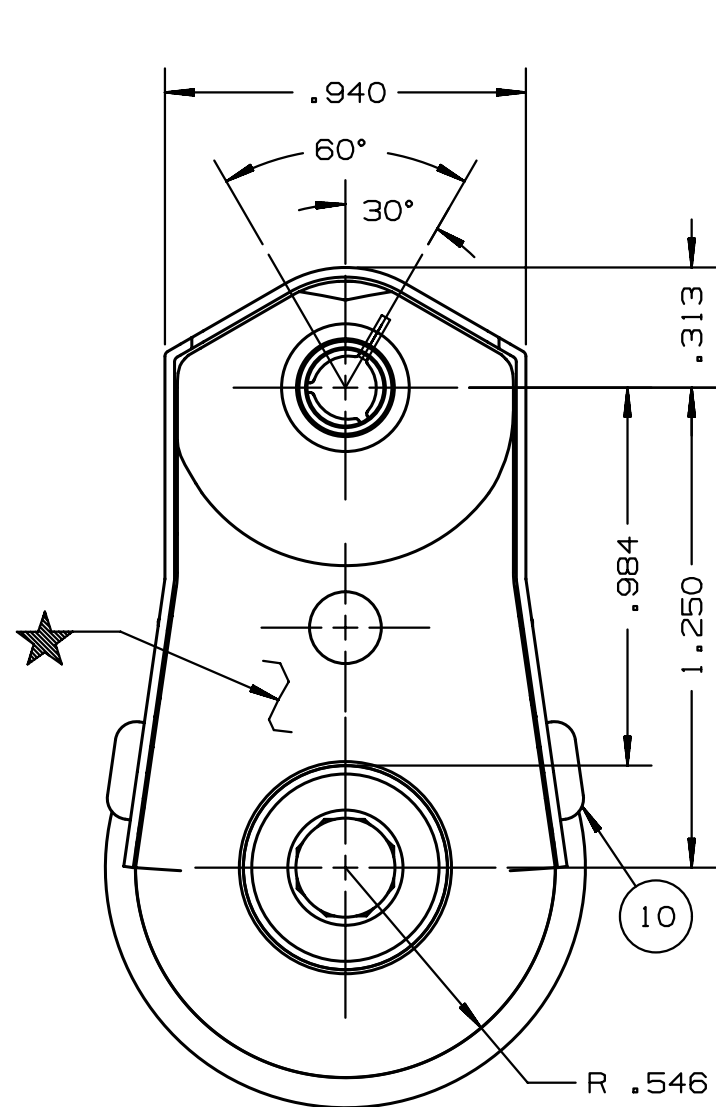
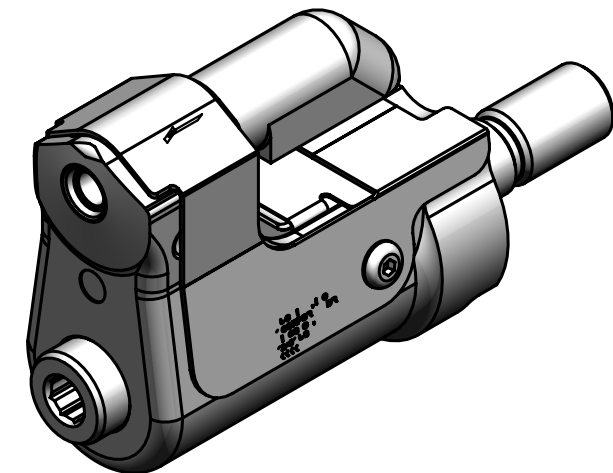
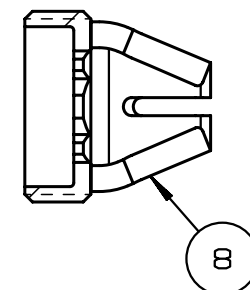
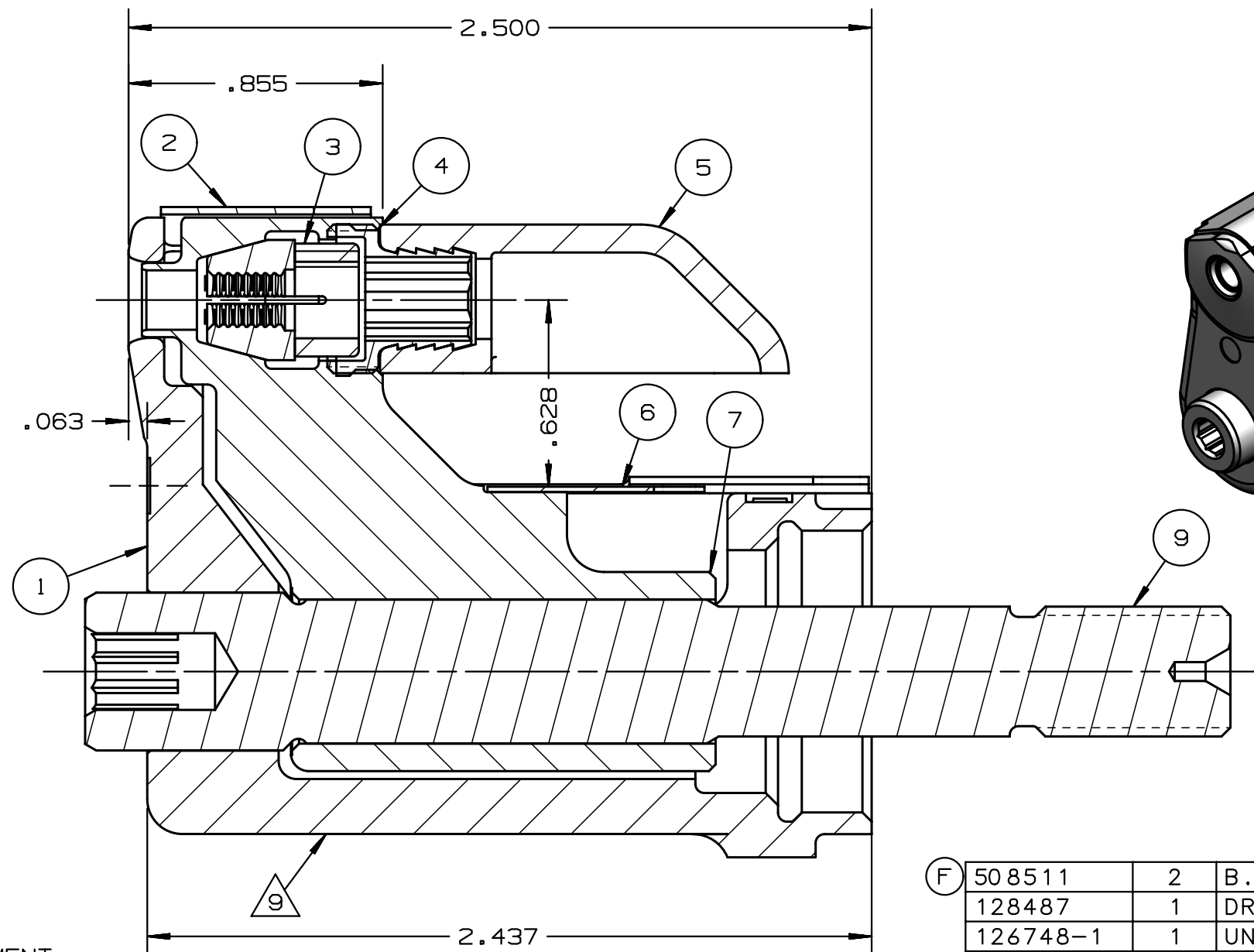


REV	DESCRIPTION	DET	DATE
D	ITEM 3, 130052 WAS 128071	EL	11/11/11
E	128517C WAS 128627C. ADDED 128487	JJC	07/24/12
F	130322C WAS 127582; 130326 WAS 126745; ADDED 508511; ADDED VIEW; ADDED PATENT ETCH	HKS	7/22/13



NOTES:

- 1 MAXIMUM RECOMMENDED STROKE .500
- 2 FOR USE WITH THE 225/245 TOOL, USE ATTACHMENT P/N 119400-1 AND STROKE LIMITER 118362
- 3 FOR USE WITH 2500 TOOL, USE ATTACHMENT P/N 119400-1 AND STROKE LIMITER KIT 119888
- 4 FOR OTHER TOOLS AND/OR OTHER TOOL AND STROKE COMBINATIONS, CONSULT ENGINEERING DEPARTMENT
- 5 SHIP WITH STOP 126747
- 6 SHIP WITH DEFLECTOR 126748-1
- 7 SHIP WITH (2) .030 SHIMS 128290 REFERENCE PB563 FOR PROPER USE.
- 8 128627C ASSEMBLY CONSISTS OF 128517C COLLET AND 128487 DRAWBAR.
- 9 ETCH "U.S. PATENT #6739170" WHERE SHOWN



F	508511	2	B.H.C.S.	10
	128487	1	DRAWBAR	9
	126748-1	1	UNITIZED DEFLECTOR	8
F	128517C	1	COLLET	7
	130326	1	GUARD	6
	120095	1	DEFLECTOR	5
	122912	1	BARBED RETAINER	4
F	130052	1	UNITIZED CHUCK JAW	3
	130322C	1	TOP GUARD	2
	127085C	1	ANVIL	1
	PART NO.	QTY	DESCRIPTION	ITEM

IDENTIFICATION PER SPEC 42-311: ★ ETCH	HUCK INTERNATIONAL, INC., I.S.D 1 CORPORATE DR KINGSTON, NEW YORK 12401		
ITAR/ECCN: EAR99	CLEARANCE NOSE ASSEMBLY -05MM LGP		
SCH B#: 8467.99.0190	FINAL ASSY: FOR USE WITH 206-375		
HTS: 8467.99.0190	ENG: MVM CK:	DATE: 07/27/04	SCALE: 2:1
	B 99-3710C		