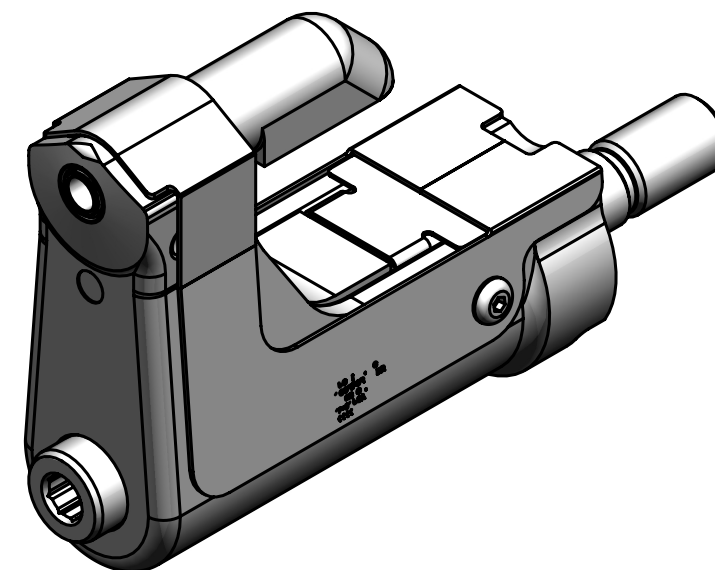


NOTES:

- 1 MAXIMUM RECOMMENDED STROKE: .500
- 2 FOR USE WITH THE 225/245 TOOL, USE ATTACHMENT P/N 119400-1 AND STROKE LIMITER 118362
- 3 FOR USE WITH 2500 TOOL, USE ATTACHMENT P/N 119400-1 AND STROKE LIMITER KIT 119888
- 4 FOR OTHER TOOLS AND/OR OTHER TOOL AND STROKE COMBINATIONS, CONSULT ENGINEERING DEPARTMENT
- 5 SHIP WITH STOP 126747
- 6 SHIP WITH DEFLECTOR 126748-1
- 7 SHIP WITH (2) .030 SHIMS 128290 REFERENCE PB563 FOR PROPER USE.
- 8 128628C ASSEMBLY CONSISTS OF 128518C COLLET AND 128488 DRAWBAR.
- 9 ETCH "U.S. PATENT #6739170" WHERE SHOWN

REV	DESCRIPTION	DET	DATE
C	ADDED NOTE 8. ADDED CENTERLINE DIMENSION	MK	09/22/09
D	ITEM 3, 130052 WAS 128071	EL	11/11/11
E	128518C WAS 128626C. ADDED 128488	JJC	07/24/12
F	130322-1C WAS 127582; 130326-1 WAS 126745; ADDED 508511; ADDED VIEW; ADDED PATENT ETCH	HKS	7/22/13



(F) 508511	2	B.H.C.S.	10
128488	1	DRAWBAR	9
126748-1	1	UNITIZED DEFLECTOR	8
128518C	1	COLLET	7
(F) 126745	1	GUARD	6
120095	1	DEFLECTOR	5
122912	1	BARBED RETAINER	4
130052	1	UNITIZED CHUCK JAW	3
(F) 127582	1	TOP GUARD	2
127087C	1	ANVIL	1
PART NO.	QTY	DESCRIPTION	ITEM

IDENTIFICATION PER SPEC 42-311: ★ ETCH	HUCK INTERNATIONAL, INC., I.S.D 1 CORPORATE DR KINGSTON, NEW YORK 12401		
ITAR/ECCN: EAR99	CLEARANCE NOSE ASSEMBLY -05MM LGP LONG		
SCH B#: 8467.99.0190	FINAL ASSY: FOR USE WITH 206-375		
HTS: 8467.99.0190	ENG: MVM CK: B	DATE: 07/27/04	SCALE: 2:1
		99-3710-1C	