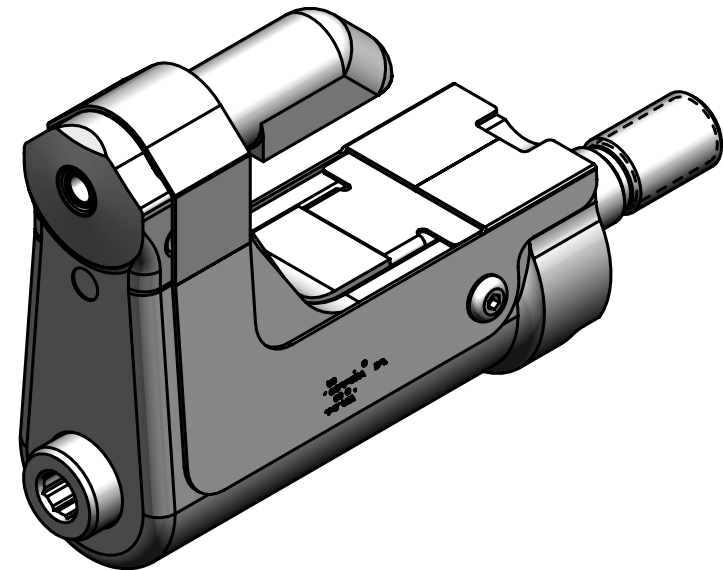
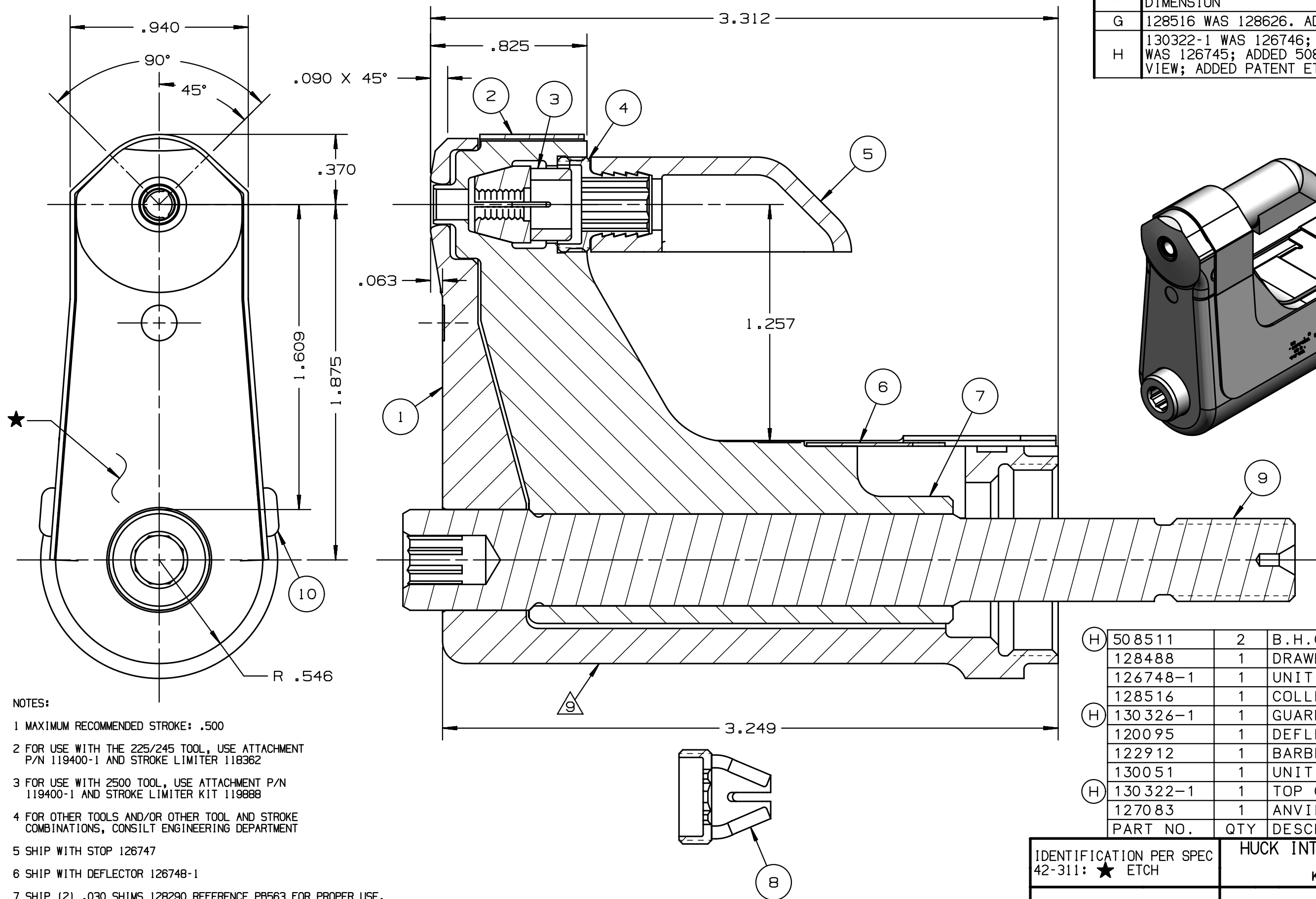


REV	DESCRIPTION	DET	DATE
F	ADDED NOTE 8. ADDED CENTERLINE DIMENSION	MK	09/22/09
G	128516 WAS 128626. ADDED 128488	JJC	07/24/12
H	130322-1 WAS 126746; 130326-1 WAS 126745; ADDED 508511; ADDED VIEW; ADDED PATENT ETCH	HKS	6/13/13



- NOTES:
- 1 MAXIMUM RECOMMENDED STROKE: .500
  - 2 FOR USE WITH THE 225/245 TOOL, USE ATTACHMENT P/N 119400-1 AND STROKE LIMITER 118362
  - 3 FOR USE WITH 2500 TOOL, USE ATTACHMENT P/N 119400-1 AND STROKE LIMITER KIT 119888
  - 4 FOR OTHER TOOLS AND/OR OTHER TOOL AND STROKE COMBINATIONS, CONSILT ENGINEERING DEPARTMENT
  - 5 SHIP WITH STOP 126747
  - 6 SHIP WITH DEFLECTOR 126748-1
  - 7 SHIP (2) .030 SHIMS 128290 REFERENCE PB563 FOR PROPER USE.
  - 8 128626 ASSEMBLY CONSISTS OF 128516 COLLET AND 128488 DRAWBAR.
  - 9 ETCH "U.S. PATENT #6739170" WHERE SHOWN

(H)	508511	2	B.H.C.S.	10
	128488	1	DRAWBAR	9
	126748-1	1	UNITIZED DEFLECTOR	8
	128516	1	COLLET	7
(H)	130326-1	1	GUARD	6
	120095	1	DEFLECTOR	5
	122912	1	BARBED RETAINER	4
	130051	1	UNITIZED CHUCK JAW	3
(H)	130322-1	1	TOP GUARD	2
	127083	1	ANVIL	1
	PART NO.	QTY	DESCRIPTION	ITEM

IDENTIFICATION PER SPEC 42-311: ★ ETCH	HUCK INTERNATIONAL, INC., I.S.D 1 CORPORATE DR KINGSTON, NEW YORK 12401		
ITAR/ECCN: EAR99	NOSE ASSEMBLY -04MM LGP LONG		
SCH B#: 8467.99.0190	FINAL ASSY: FOR USE WITH 206-375		
HTS: 8467.99.0190	ENG: MVM/CK:	DATE: 10/15/02	SCALE: 2:1
	B	99-3709-1	