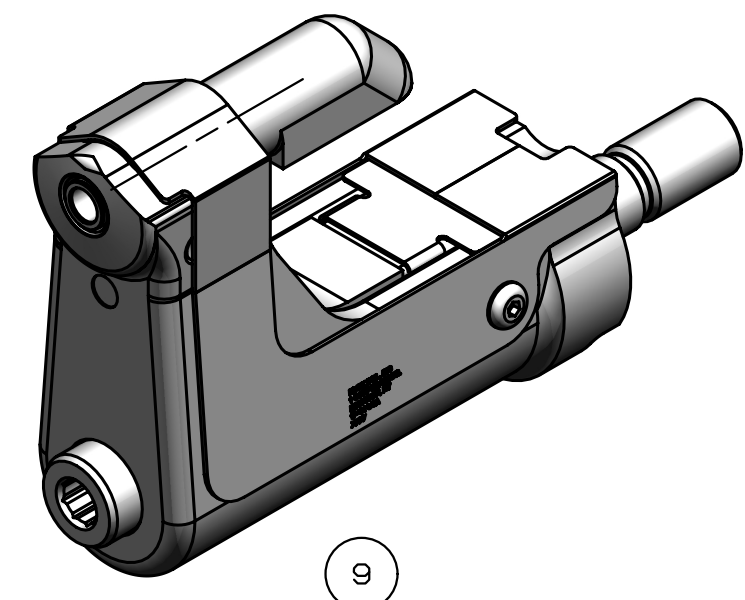


NOTES:

- 1 MAXIMUM RECOMMENDED STROKE: .500
- 2 FOR USE WITH THE 225/245 TOOL, USE ATTACHMENT P/N 119400-1 AND STROKE LIMITER 118362
- 3 FOR USE WITH 2500 TOOL, USE ATTACHMENT P/N 119400-1 AND STROKE LIMITER KIT 119888
- 4 FOR OTHER TOOLS AND/OR OTHER TOOL AND STROKE COMBINATIONS, CONSULT ENGINEERING DEPARTMENT
- 5 SHIP WITH STOP 126747
- 6 SHIP WITH DEFLECTOR 126748-1
- 7 SHIP WITH (2) .030 SHIMS 128563 REFERENCE PB563 FOR PROPER USE.
- 8 128635C ASSEMBLY CONSISTS OF 128525C COLLET AND 128488 DRAWBAR.
- 9 ETCH "U.S. PATENT #6739170" WHERE SHOWN

REV	DESCRIPTION	DET	DATE
C	ADDED NOTE 8, ADDED CENTERLINE DIMENSION		09/21/09
D	ITEM 3, 130052 WAS 128071	EL	11/10/11
E	128525C WAS 128635C, ADDED 128488	JJC	07/24/12
F	130322-1C WAS 127582; 130326-1 WAS 126745; ADDED 508511; ADDED VIEW; ADDED PATENT ETCH	HKS	7/22/13



FOR USE WITH 206-375

(F)	508511	2	B.H.C.S.	10
	128488	1	DRAWBAR	9
	126748-1	1	UNITIZED DEFLECTOR	8
	128525C	1	COLLET	7
(F)	130326-1	1	GUARD	6
	120095	1	DEFLECTOR	5
	122912	1	BARBED RETAINER	4
	130052	1	UNITIZED CHUCK JAW	3
(F)	130322-1C	1	TOP GUARD	2
	127103C	1	ANVIL	1
	PART NO.	QTY	DESCRIPTION	ITEM

IDENTIFICATION PER SPEC 42-311: ★ ETCH	
ITAR:	HUCK INTERNATIONAL, INC., I.S.D. 1 CORPORATE DR, P.O. BOX 2270 KINGSTON, NEW YORK 12401
ECCN: EAR99	CLEARANCE NOSE ASSEMBLY -05MM GP LONG
SCH B#:8467.99.0190	DET: MVM CK: DATE: 07/28/04 SCALE: 2:1
HTS: 8467.99.0190	B 99-3707-1C