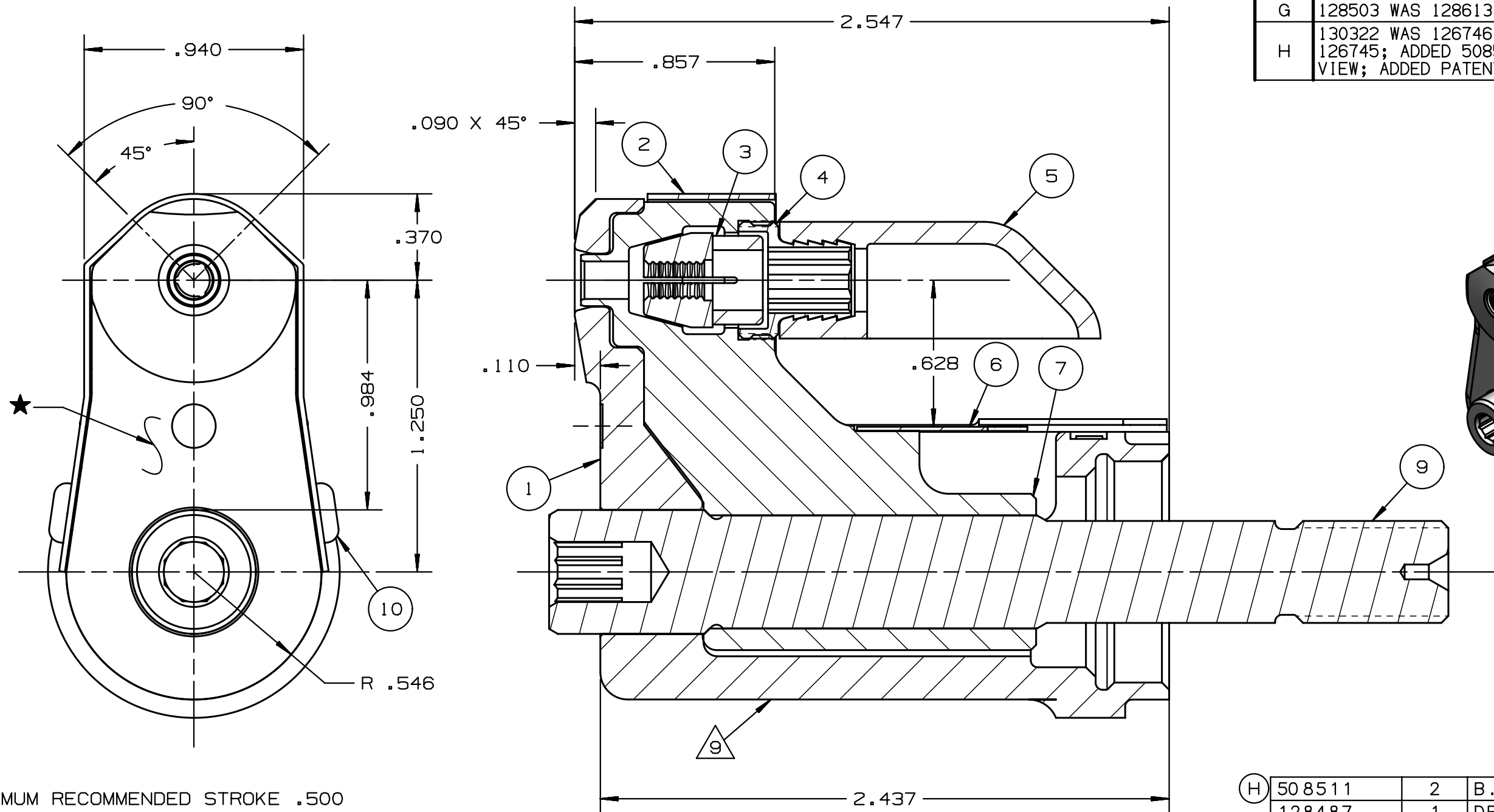


| REV | DESCRIPTION | DET | DATE |
|-----|---|-----|----------|
| F | ITEM 3, 130051 WAS 128076 | EL | 11/10/11 |
| G | 128503 WAS 128613, ADDED 128487 | JJC | 07/19/12 |
| H | 130322 WAS 126746; 130326 WAS 126745; ADDED 508511; ADDED VIEW; ADDED PATENT ETCH | HKS | 6/13/13 |



NOTES:

- 1 MAXIMUM RECOMMENDED STROKE .500
- 2 FOR USE WITH THE 225/245 TOOL, USE ATTACHMENT P/N 119400-1 AND STROKE LIMITER 118362
- 3 FOR USE WITH 2500, USE ATTACHMENT P/N 119400-1 AND STROKE LIMITER KIT 119888
- 4 FOR OTHER TOOLS AND/OR OTHER TOOL AND STROKE COMBINATIONS, CONSULT ENGINEERING DEPARTMENT
- 5 SHIP WITH STOP 126747
- 6 SHIP WITH DEFLECTOR 126748-1
- 7 SHIP WITH (2) .030 SHIMS 128290 REFERENCE PB563 FOR PROPER USE.
- 8 128613 ASSEMBLY CONSISTS OF 128503 COLLET AND 128487 DRAWBAR.
- 9 ETCH "U.S. PATENT #6739170" WHERE SHOWN

| | | | | |
|-----|----------|-----|--------------------|------|
| (H) | 508511 | 2 | B.H.C.S. | 10 |
| | 128487 | 1 | DRAWBAR | 9 |
| | 126748-1 | 1 | UNITIZED DEFLECTOR | 8 |
| | 128503 | 1 | COLLET | 7 |
| (H) | 130326 | 1 | GUARD | 6 |
| | 120095 | 1 | DEFLECTOR | 5 |
| | 122912 | 1 | BARBED RETAINER | 4 |
| | 130051 | 1 | UNITIZED CHUCK JAW | 3 |
| (H) | 130322 | 1 | TOP GUARD | 2 |
| | 127099 | 1 | ANVIL | 1 |
| | PART NO. | QTY | DESCRIPTION | ITEM |

| | | | |
|--|---|----------------|------------|
| IDENTIFICATION PER SPEC 42-311: ★ ETCH | HUCK INTERNATIONAL, INC., I.S.D 1 CORPORATE DR KINGSTON, NEW YORK 12401 | | |
| ITAR/ECCN: EAR99 | NOSE ASSEMBLY -04 MGP | | |
| SCH B#: 8467.99.0190 | FINAL ASSY: FOR USE WITH 206-375 | | |
| HTS: 8467.99.0190 | ENG: MVM CK: | DATE: 10/2/02 | SCALE: 2:1 |
| | B | 99-3706 | |