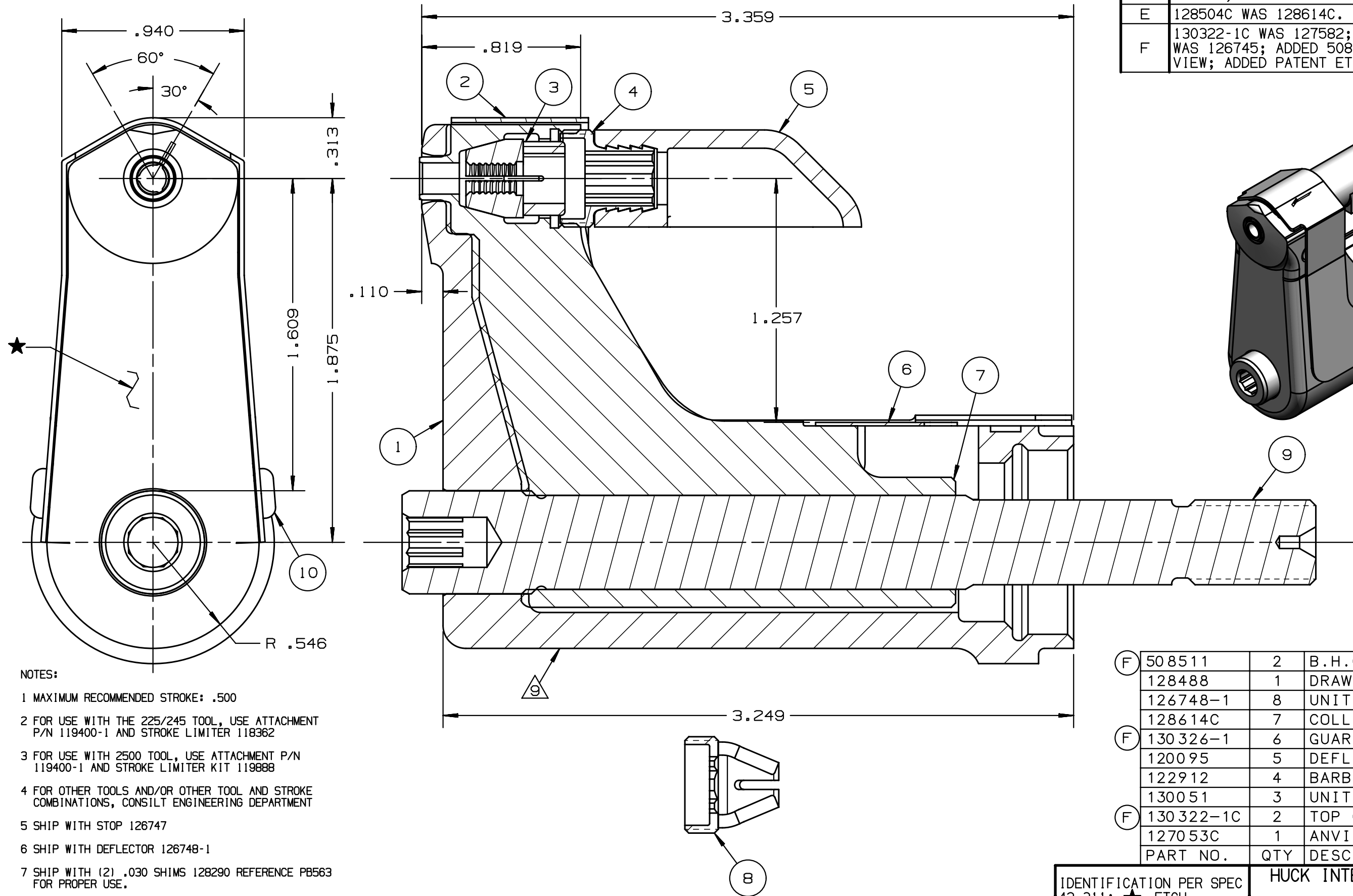


REV	DESCRIPTION	DET	DATE
D	ITEM 3, 130051 WAS 128076	EL	11/10/11
E	128504C WAS 128614C. ADDED 128488	JJC	07/18/12
F	130322-1C WAS 127582; 130326-1 WAS 126745; ADDED 508511; ADDED VIEW; ADDED PATENT ETCH	HKS	7/22/13



- NOTES:
- 1 MAXIMUM RECOMMENDED STROKE: .500
 - 2 FOR USE WITH THE 225/245 TOOL, USE ATTACHMENT P/N 119400-1 AND STROKE LIMITER 118362
 - 3 FOR USE WITH 2500 TOOL, USE ATTACHMENT P/N 119400-1 AND STROKE LIMITER KIT 119888
 - 4 FOR OTHER TOOLS AND/OR OTHER TOOL AND STROKE COMBINATIONS, CONSILT ENGINEERING DEPARTMENT
 - 5 SHIP WITH STOP 126747
 - 6 SHIP WITH DEFLECTOR 126748-1
 - 7 SHIP WITH (2) .030 SHIMS 128290 REFERENCE PB563 FOR PROPER USE.
 - 8 128614C ASSEMBLY CONSISTS OF 128504C COLLET AND 128488 DRAWBAR.
 - 9 ETCH "U.S. PATENT #6739170" WHERE SHOWN

F	508511	2	B.H.C.S.	10
	128488	1	DRAWBAR	9
	126748-1	8	UNITIZED DEFLECTOR	8
F	128614C	7	COLLET & DRAWBAR ASSY	7
	130326-1	6	GUARD	6
	120095	5	DEFLECTOR	5
F	122912	4	BARBED RETAINING NUT	4
	130051	3	UNITIZED CHUCK JAWS	3
	130322-1C	2	TOP GUARD	2
	127053C	1	ANVIL	1
	PART NO.	QTY	DESCRIPTION	ITEM

IDENTIFICATION PER SPEC 42-311: ★ ETCH	HUCK INTERNATIONAL, INC., I.S.D 1 CORPORATE DR KINGSTON, NEW YORK 12401		
ITAR/ECCN: EAR99	CLEARANCE NOSE ASSEMBLY -05 GP TENSION LONG		
SCH B#: 8467.99.0190	FINAL ASSY: FOR USE WITH 206-375		
HTS: 8467.99.0190	ENG: B	CPL: CK: DATE: 7/24/04	SCALE: 2:1
	99-3703T-1C		