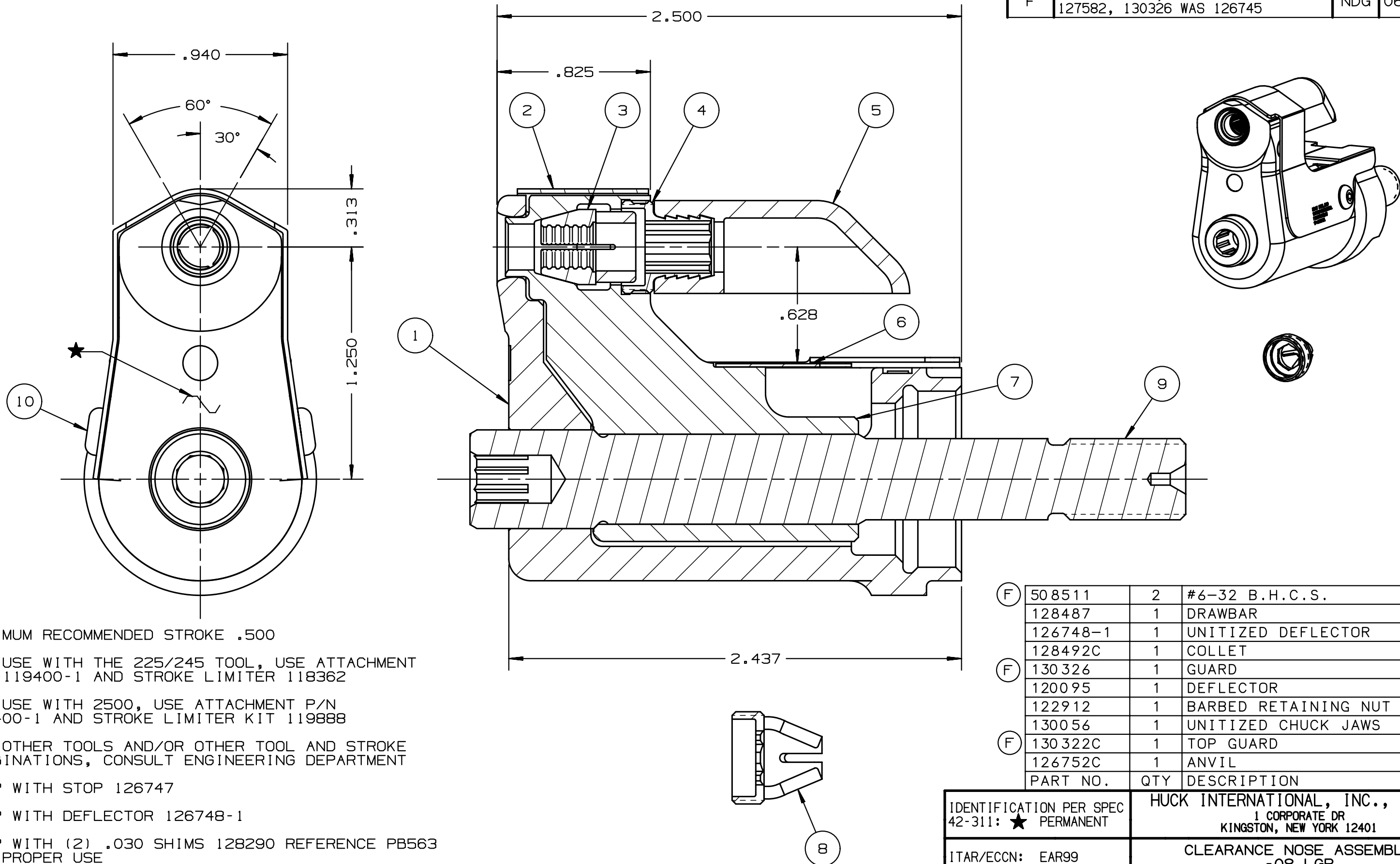


REV	DESCRIPTION	DET	DATE
D	ITEM 3, 130056 WAS 128072	EL	11/11/11
E	128492C WAS 128602C; ADDED 128487	JJC	07/18/12
F	ADDED 508511, 130322C WAS 127582, 130326 WAS 126745	NDG	06/04/13



- NOTES:
- 1 MAXIMUM RECOMMENDED STROKE .500
 - 2 FOR USE WITH THE 225/245 TOOL, USE ATTACHMENT P/N 119400-1 AND STROKE LIMITER 118362
 - 3 FOR USE WITH 2500, USE ATTACHMENT P/N 119400-1 AND STROKE LIMITER KIT 119888
 - 4 FOR OTHER TOOLS AND/OR OTHER TOOL AND STROKE COMBINATIONS, CONSULT ENGINEERING DEPARTMENT
 - 5 SHIP WITH STOP 126747
 - 6 SHIP WITH DEFLECTOR 126748-1
 - 7 SHIP WITH (2) .030 SHIMS 128290 REFERENCE PB563 FOR PROPER USE

F	508511	2	#6-32 B.H.C.S.	10
	128487	1	DRAWBAR	9
	126748-1	1	UNITIZED DEFLECTOR	8
	128492C	1	COLLET	7
F	130326	1	GUARD	6
	120095	1	DEFLECTOR	5
	122912	1	BARBED RETAINING NUT	4
	130056	1	UNITIZED CHUCK JAWS	3
F	130322C	1	TOP GUARD	2
	126752C	1	ANVIL	1
	PART NO.	QTY	DESCRIPTION	ITEM

IDENTIFICATION PER SPEC 42-311: ★ PERMANENT		HUCK INTERNATIONAL, INC., I.S.D 1 CORPORATE DR KINGSTON, NEW YORK 12401	
ITAR/ECCN: EAR99		CLEARANCE NOSE ASSEMBLY -08 LGP	
SCH B#: 8467.99.0190		FINAL ASSY: FOR USE WITH 206-375	
HTS: 8467.99.0190		ENG: MVM CK: DATE: 07/26/04 SCALE: 2:1	
		B	99-3702C