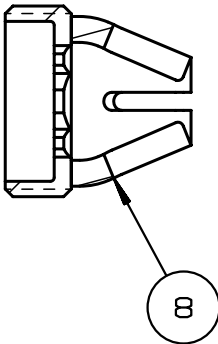
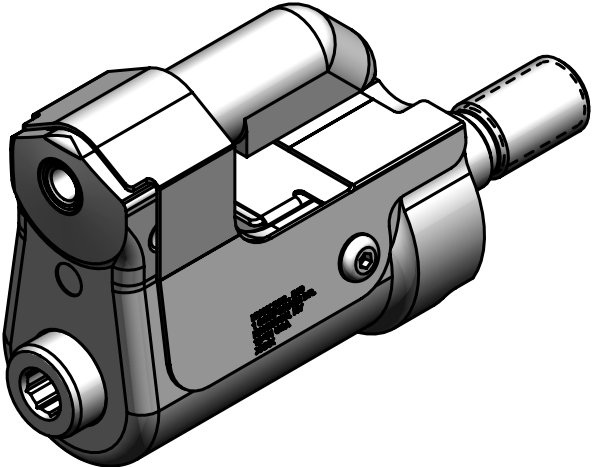
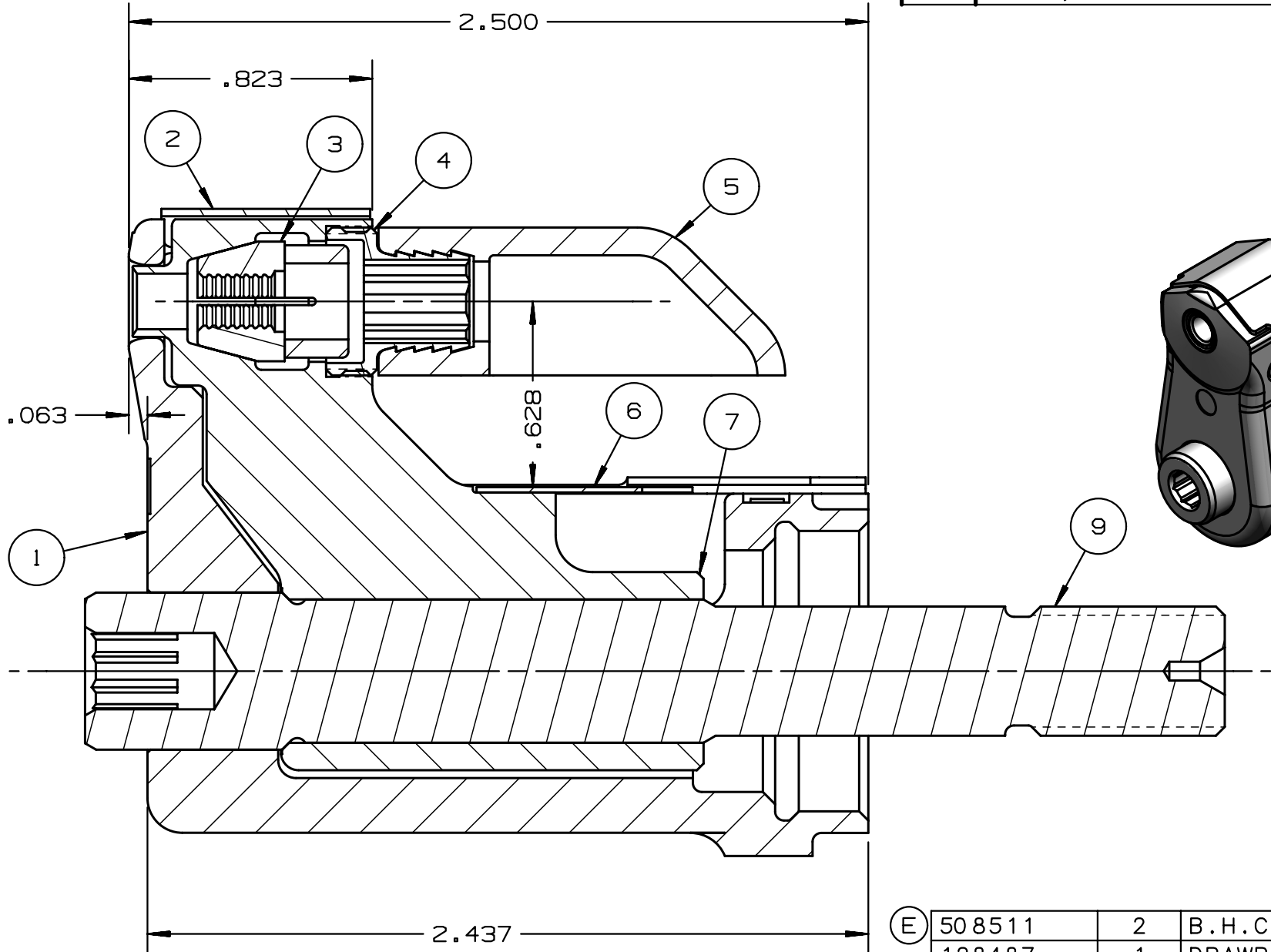
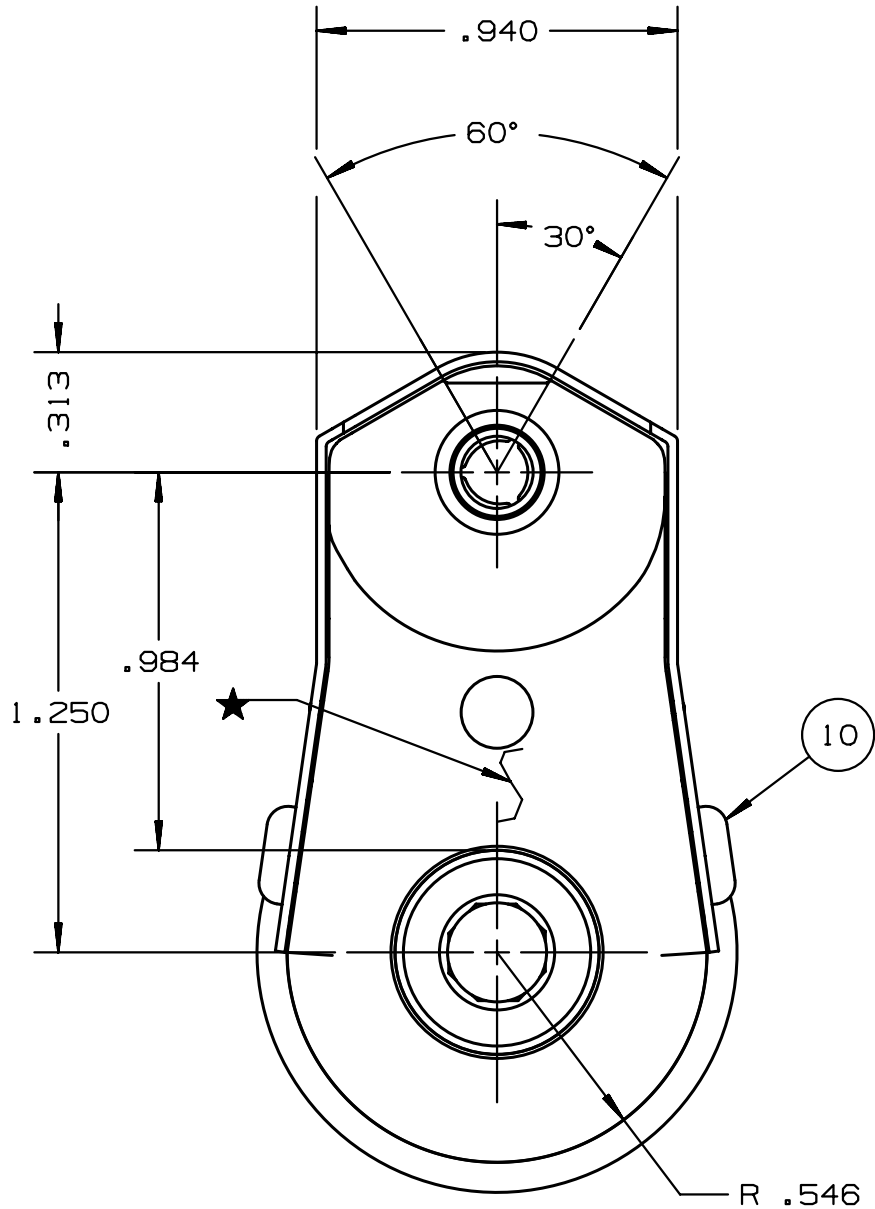


REV	DESCRIPTION	DET	DATE
C	ITEM 3, 130052 WAS 128071	EL	11/10/11
D	128496C WAS 128606C; ADDED 128487	JJC	07/18/12
E	130322C WAS 127582; 130326 WAS 126745; ADDED 508511	HKS	6/13/13



- NOTES:
- 1 MAXIMUM RECOMMENDED STROKE .500
 - 2 FOR USE WITH THE 225/245 TOOL, USE ATTACHMENT P/N 119400-1 AND STROKE LIMITER 118362
 - 3 FOR USE WITH 2500, USE ATTACHMENT P/N 119400-1 AND STROKE LIMITER KIT 119888
 - 4 FOR OTHER TOOLS AND/OR OTHER TOOL AND STROKE COMBINATIONS, CONSULT ENGINEERING DEPARTMENT
 - 5 SHIP WITH STOP 126747
 - 6 SHIP WITH DEFLECTOR 126748-1
 - 7 SHIP WITH (2) .030 SHIMS 128290 REFERENCE PB563 FOR PROPER USE

E	508511	2	B.H.C.S.	10
	128487	1	DRAWBAR	9
	126748-1	1	UNITIZED DEFLECTOR	8
	128496C	1	COLLET	7
E	130326	1	GUARD	6
	120095	1	DEFLECTOR	5
	122912	1	BARBED RETAINING NUT	4
	130052	1	UNITIZED CHUCK JAWS	3
E	130322C	1	TOP GUARD	2
	127036C	1	ANVIL	1
	PART NO.	QTY	DESCRIPTION	ITEM

IDENTIFICATION PER SPEC 42-311: ★ ETCH	HUCK INTERNATIONAL, INC., I.S.D 1 CORPORATE DR KINGSTON, NEW YORK 12401		
ITAR/ECCN: EAR99	CLEARANCE NOSE ASSEMBLY -06LGP		
SCH B#: 8467.99.0190	FINAL ASSY: -		
HTS: 8467.99.0190	ENG: MJK	CK:	DATE: 07/25/04 SCALE: 2:1
	B	99-3701C	