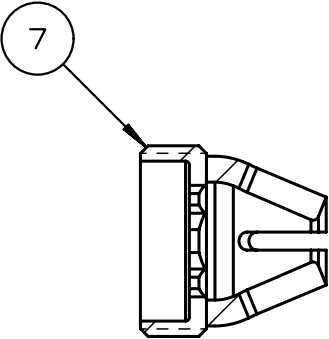
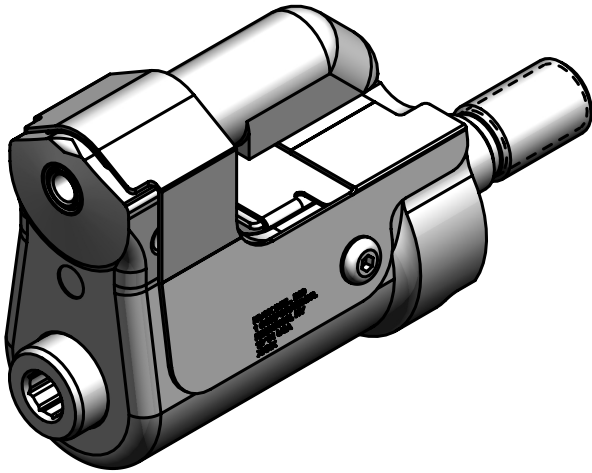
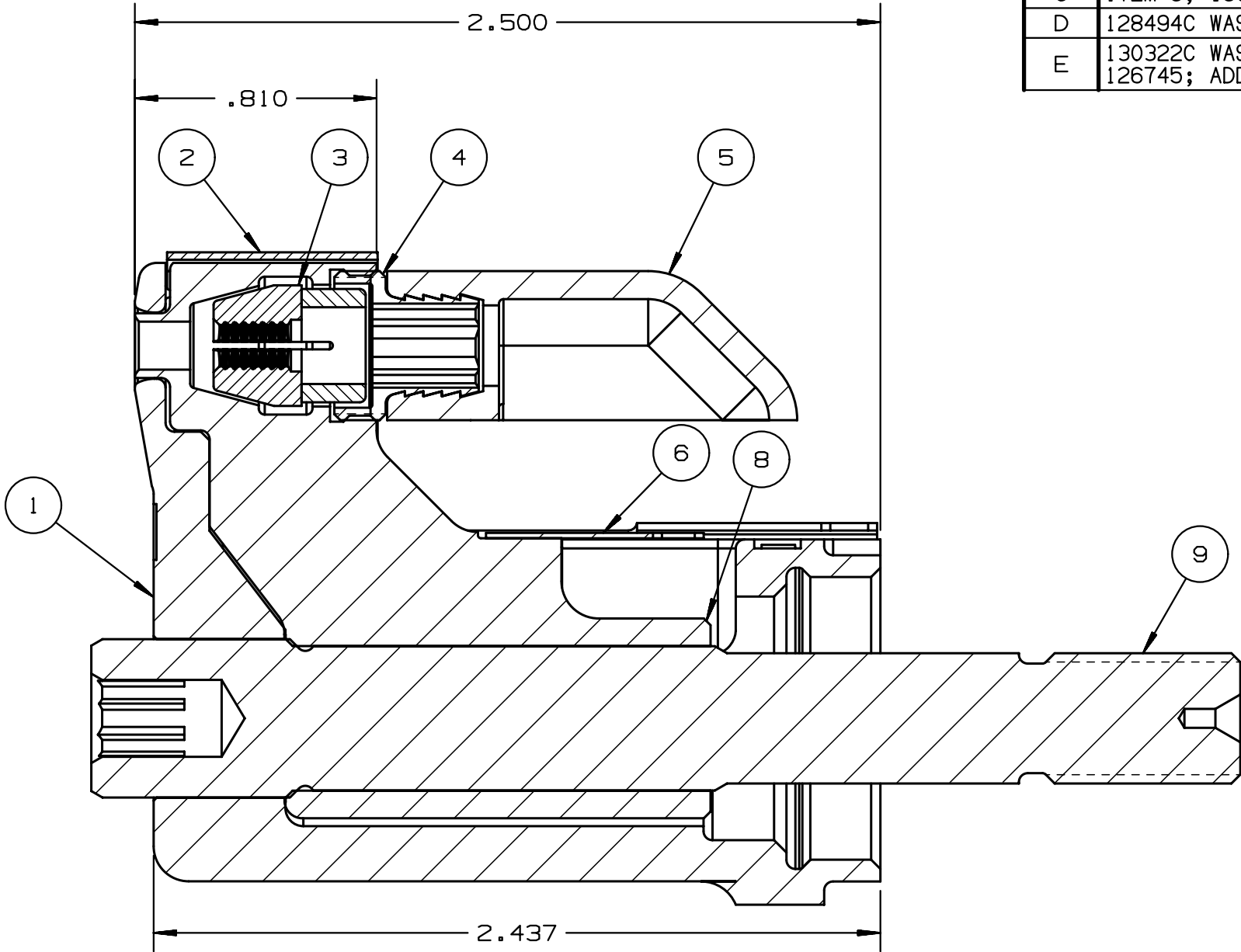
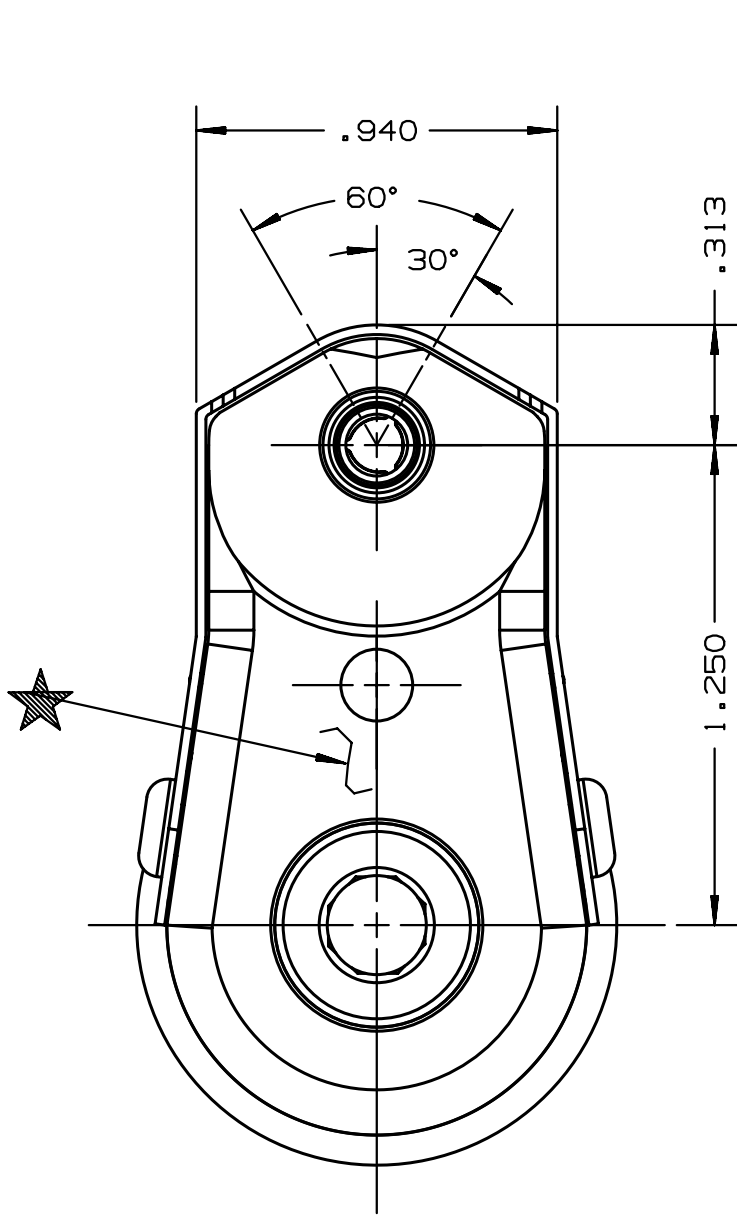


REV	DESCRIPTION	DET	DATE
C	ITEM 3, 130051 WAS 128076	EL	11/10/11
D	128494C WAS 128604C; ADDED 128487	JJC	07/13/12
E	130322C WAS 127582; 130326 WAS 126745; ADDED 508511	HKS	6/13/13



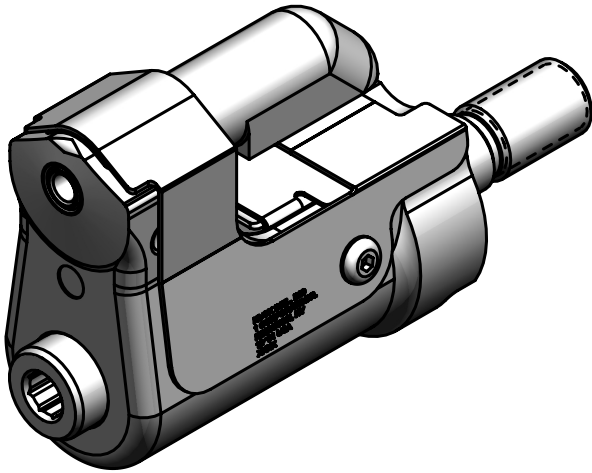
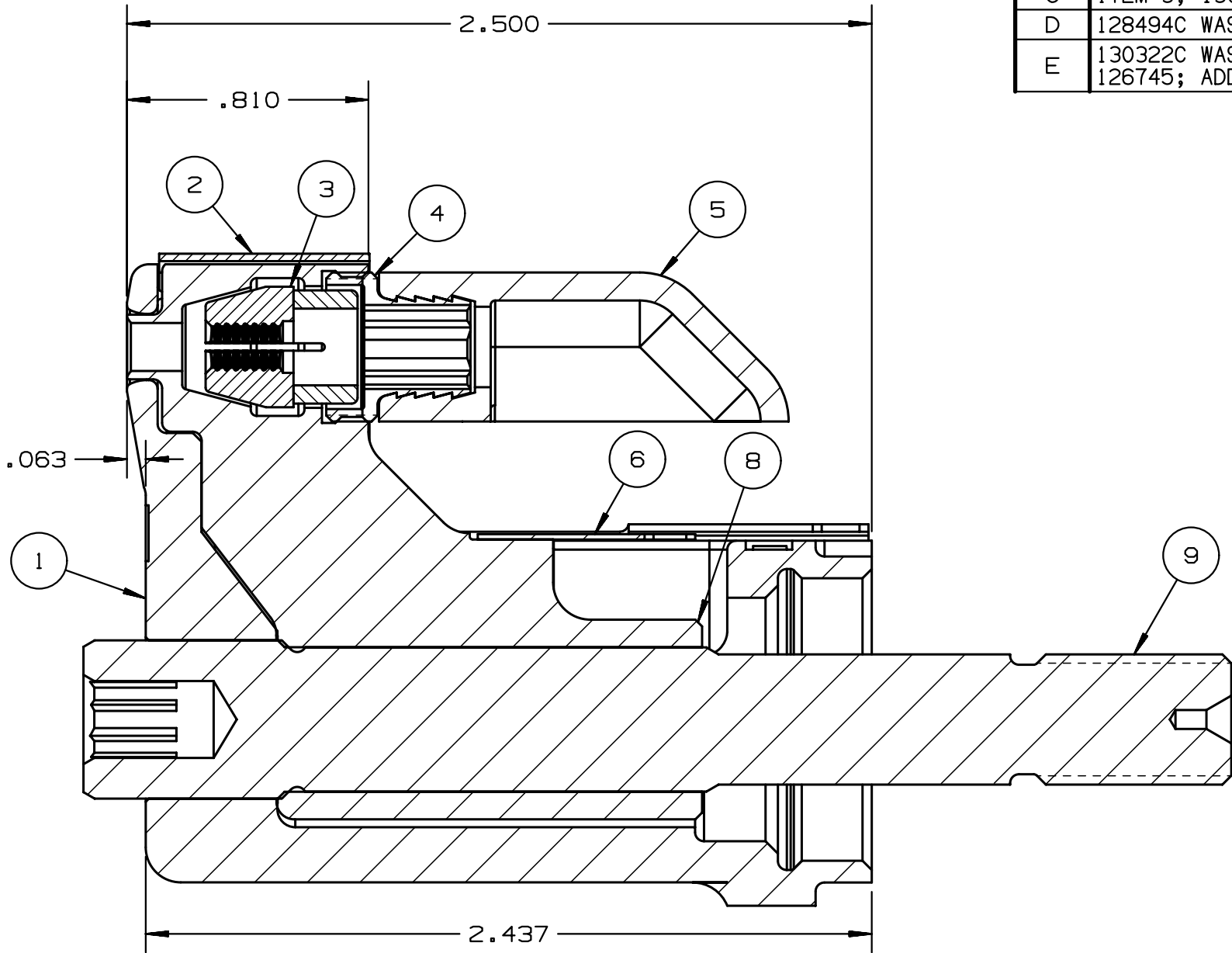
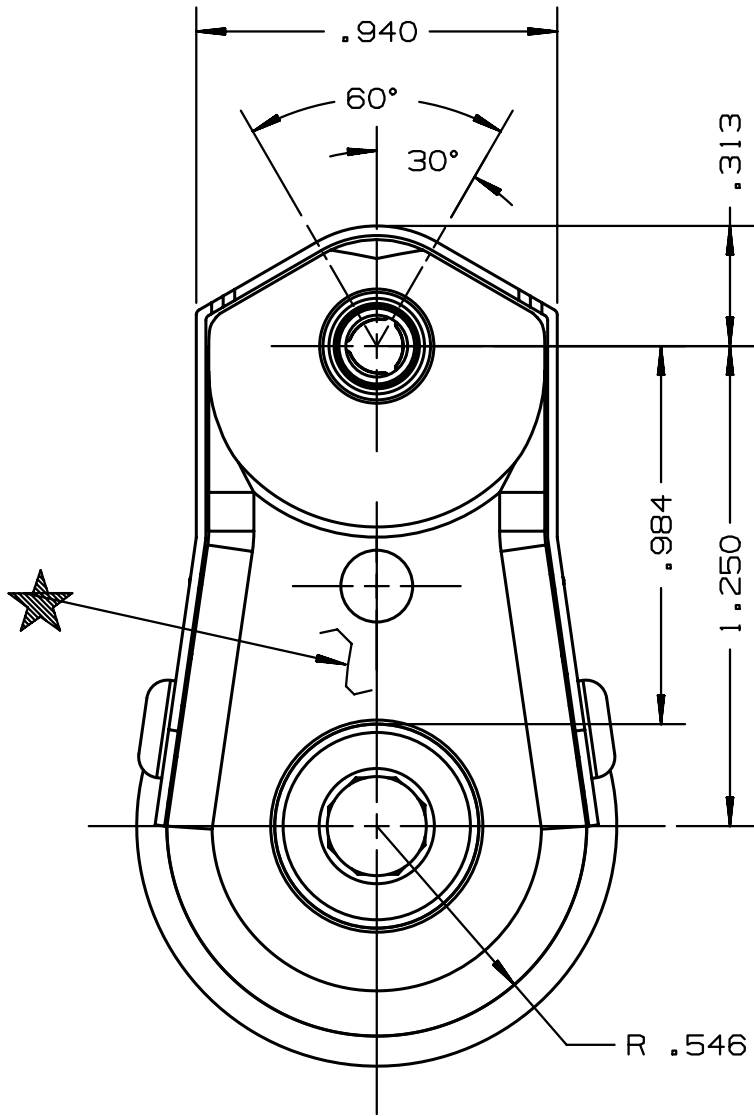
SECTION A - A

- NOTES:
- 1 MAXIMUM RECOMMENDED STROKE .500
  - 2 FOR USE WITH THE 225/245 TOOL, USE ATTACHMENT P/N 119400-1 AND STROKE LIMITER 118362
  - 3 FOR USE WITH 2500, USE ATTACHMENT P/N 119400-1 AND STROKE LIMITER KIT 119888
  - 4 FOR OTHER TOOLS AND/OR OTHER TOOL AND STROKE COMBINATIONS, CONSULT ENGINEERING DEPARTMENT
  - 5 SHIP WITH STOP 126747
  - 6 SHIP WITH DEFLECTOR 126748-1
  - 7 SHIP WITH (2) .030 SHIMS 128290 REFERENCE PB563 FOR PROPER USE

E	508511	2	B.H.C.S.	10
	128487	1	DRAWBAR	9
	128494C	1	COLLET	8
	126748-1	1	UNITIZED DELECTOR	7
E	130326	1	GUARD	6
	120095	1	DEFLECTOR	5
	122912	1	BARBED RETAINING NUT	4
	130051	1	UNITIZED CHUCK JAWS	3
E	130322C	1	TOP GUARD	2
	127032C	1	MACHINED ANVIL	1
	PART NO.	QTY	DESCRIPTION	ITEM

IDENTIFICATION PER SPEC 42-311: ★ ETCH		HUCK INTERNATIONAL, INC., I.S.D 1 CORPORATE DR KINGSTON, NEW YORK 12401	
ITAR/ECCN: EAR99		CLEARANCE NOSE ASSEMBLY -05 LGP	
SCH B#: 8467.99.0190		FINAL ASSY: FOR USE WITH 206-375	
HTS: 8467.99.0190		ENG: CPL CK:	DATE: 07/22/04 SCALE: 2:1
		B	99-3700C

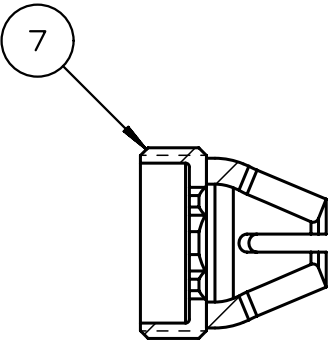
REV	DESCRIPTION	DET	DATE
C	ITEM 3, 130051 WAS 128076	EL	11/10/11
D	128494C WAS 128604C; ADDED 128487	JJC	07/13/12
E	130322C WAS 127582; 130326 WAS 126745; ADDED 508511	HKS	6/13/13



NOTES:

- 1 MAXIMUM RECOMMENDED STROKE .500
- 2 FOR USE WITH THE 225/245 TOOL, USE ATTACHMENT P/N 119400-1 AND STROKE LIMITER 118362
- 3 FOR USE WITH 2500, USE ATTACHMENT P/N 119400-1 AND STROKE LIMITER KIT 119888
- 4 FOR OTHER TOOLS AND/OR OTHER TOOL AND STROKE COMBINATIONS, CONSULT ENGINEERING DEPARTMENT
- 5 SHIP WITH STOP 126747
- 6 SHIP WITH DEFLECTOR 126748-1
- 7 SHIP WITH (2) .030 SHIMS 128290 REFERENCE PB563 FOR PROPER USE

SECTION A - A



E	508511	2	B.H.C.S.	10
	128487	1	DRAWBAR	9
	128494C	1	COLLET	8
	126748-1	1	UNITIZED DELECTOR	7
E	130326	1	GUARD	6
	120095	1	DEFLECTOR	5
	122912	1	BARBED RETAINING NUT	4
	130051	1	UNITIZED CHUCK JAWS	3
E	130322C	1	TOP GUARD	2
	127032C	1	MACHINED ANVIL	1
	PART NO.	QTY	DESCRIPTION	ITEM

IDENTIFICATION PER SPEC 42-311: ★ ETCH		HUCK INTERNATIONAL, INC., I.S.D 1 CORPORATE DR KINGSTON, NEW YORK 12401	
ITAR/ECCN: EAR99		CLEARANCE NOSE ASSEMBLY -05 LGP	
SCH B#: 8467.99.0190		FINAL ASSY: FOR USE WITH 206-375	
HTS: 8467.99.0190		ENG: CPL CK:	DATE: 07/22/04 SCALE: 2:1
		B	99-3700C