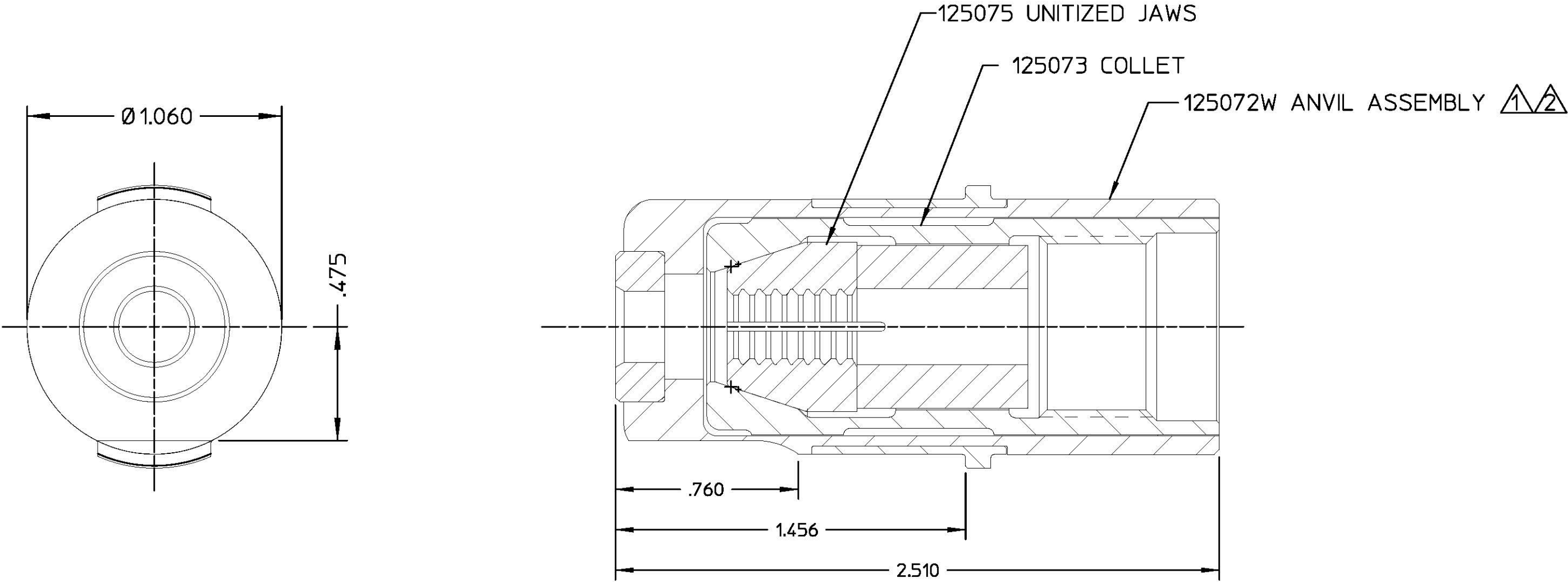


NOTES:

- 1 ANVIL ASSEMBLY 125072W CONSISTS OF:  
ANVIL HOLDER ASSEMBLY 125071 AND  
ANVIL INSERT 126266-12.
- 2 ANVIL HOLDER ASSEMBLY 125071 CONSISTS OF:  
ANVIL HOLDER 125070 AND  
RETAINER 120737.



FORM: KE104 REV C		By accepting this proprietary Huck drawing, recipient agrees not to reproduce or disclose any part thereof to any others without the written permission of Huck International, Inc.			
MATERIAL:	-	SPEC:	TOLERANCES UNLESS OTHERWISE SPECIFIED: (ALL DIMENSIONS ARE IN INCHES)		HUCK INTERNATIONAL, INC., I.S.D. 85 GRAND STREET, P.O. BOX 2270 KINGSTON, NEW YORK 12401
HARDNESS:	-	(RAW OR STOCKED STATE)			
HEAT TREAT TO:	-	SPEC:	.XX, .XXX ±		NOSE ASSEMBLY -12 BLIND BOLT
SURFACE TREAT:	-	SPEC:	INT. COR. RADII		
SURFACE FINISH NOT TO EXCEED:		Ra	BREAK EDGES		DET: WV CK: DATE: 09/18/00 SCALE: 2:1
IDENTIFICATION PER SPEC 42-311: ★		ETCH	ANGLES ±		FOC.
SURFACES TO BE		◎, //, ⊕, ⊥, & ▽ WITHIN T.I.R.	FINAL ASSY: 353		FAC.
				B	99-2721W