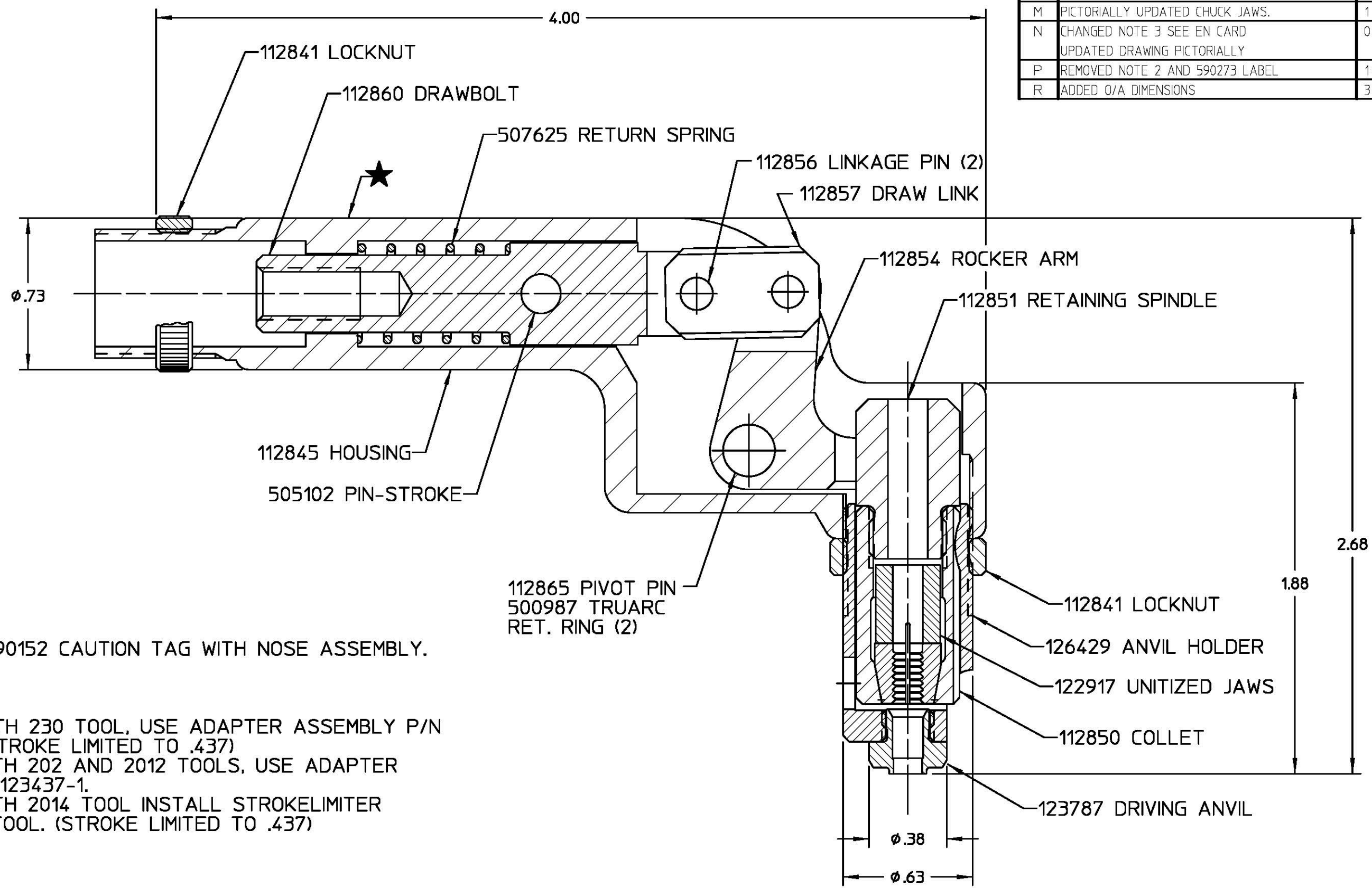


REV	DESCRIPTION	DATE
L	507625 WAS 112861	04/06/01
M	PICTORIALLY UPDATED CHUCK JAWS.	11/14/01
N	CHANGED NOTE 3 SEE EN CARD UPDATED DRAWING PICTORIALY	06/02/05
P	REMOVED NOTE 2 AND 590273 LABEL	10/26/11
R	ADDED O/A DIMENSIONS	3/2/12



- NOTES:
- SHIP P/N 590152 CAUTION TAG WITH NOSE ASSEMBLY.
 -
 - TO USE WITH 230 TOOL, USE ADAPTER ASSEMBLY P/N 123437. (STROKE LIMITED TO .437)
TO USE WITH 202 AND 2012 TOOLS, USE ADAPTER ASSEMBLY 123437-1.
TO USE WITH 2014 TOOL INSTALL STROKELIMITER 126663 IN TOOL. (STROKE LIMITED TO .437)

HUCK INTERNATIONAL, INC., L.S.D. 85 GRAND STREET, P.O. BOX 2270 KINGSTON, NEW YORK 12401			
NOSE ASSEMBLY -06 RIGHT ANGLE OFFSET			
DET: CHR.	CK:	DATE: 06/02/05	SCALE: 2/1
FOC.	FAC.	B	99-1102