

REV	DESCRIPTION	DATE
B	CHUCK JAWS PICTORIALY UPDATED.	02/16/01
C	126688 WAS 122019.	11/13/01

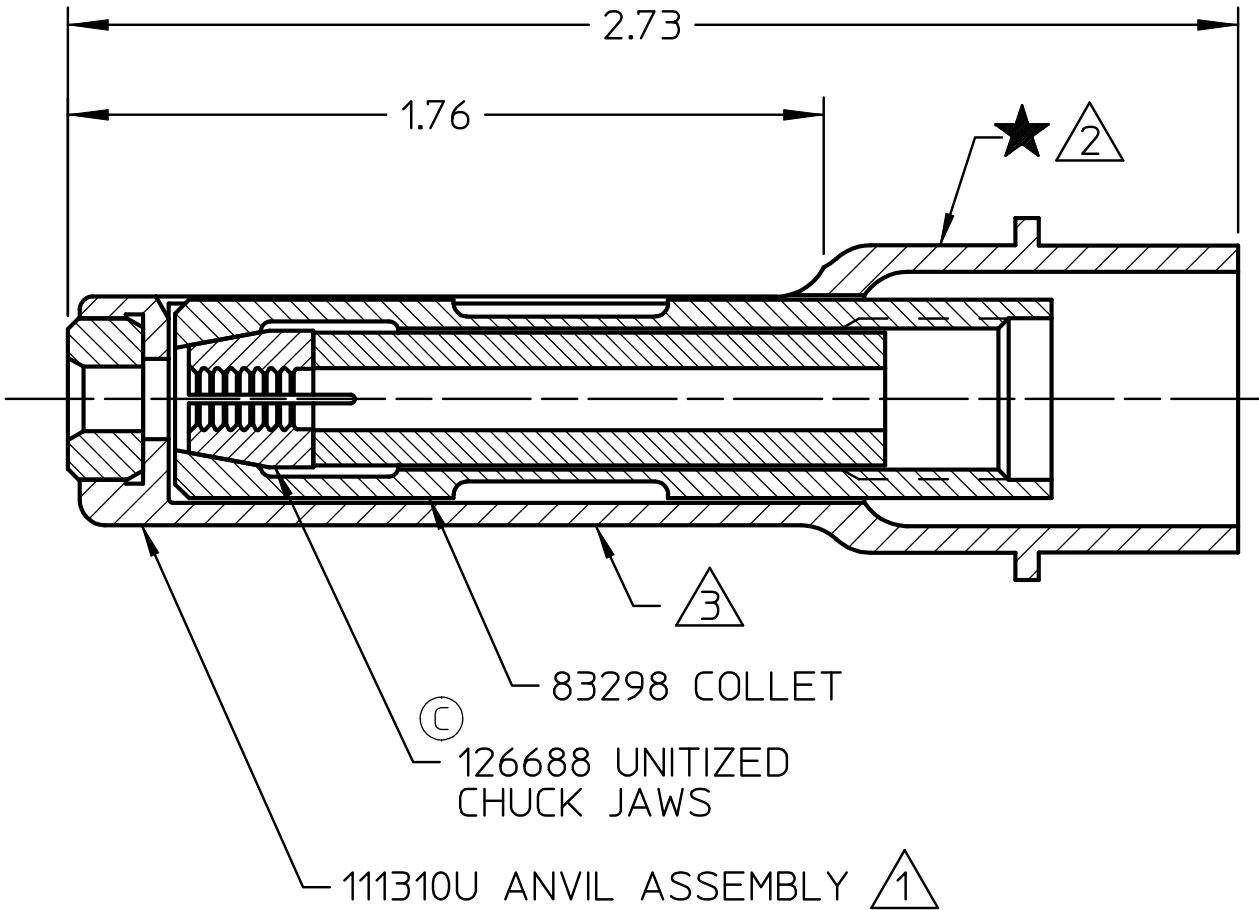
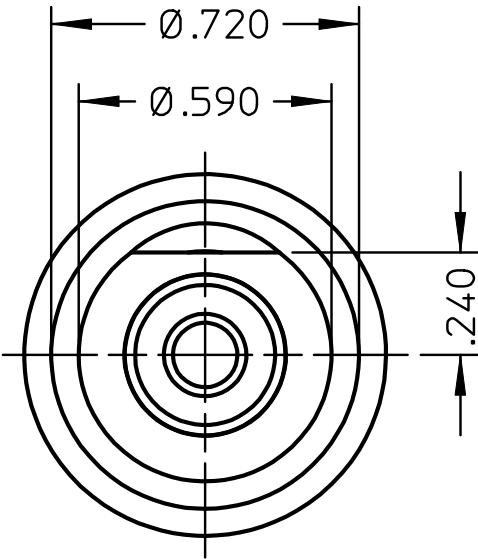
NOTES:

- 1

ANVIL ASSEMBLY P/N 111310U CONSISTS OF:  
DRIVING ANVIL P/N 125444-06 AND  
ANVIL HOLDER P/N 111530  
(NOT AVAILABLE SEPARATELY).
- 2

ETCH: HUCK UNIMATIC -06  
MODEL NO. 99-1035U  
CHARACTER SIZE TO EQUAL 1/8".
- 3

AFFIX WARNING STICKER P/N 590273 TO  
ANVIL HOLDER IN LOCATION SHOWN.



IDENTIFICATION PER SPEC 42-311: ★ ETCH			
<b>HUCK INTERNATIONAL, INC., I.S.D.</b> 1 CORPORATE DRIVE, P.O. BOX 2270 KINGSTON, NEW YORK 12401			
<b>NOSE ASSEMBLY</b> <b>-06 FLAT SMLS</b>			
DET: MP	CK:	DATE: 12/13/99	SCALE: 2:1
FOC.	B	99-1035U	
FAC.			