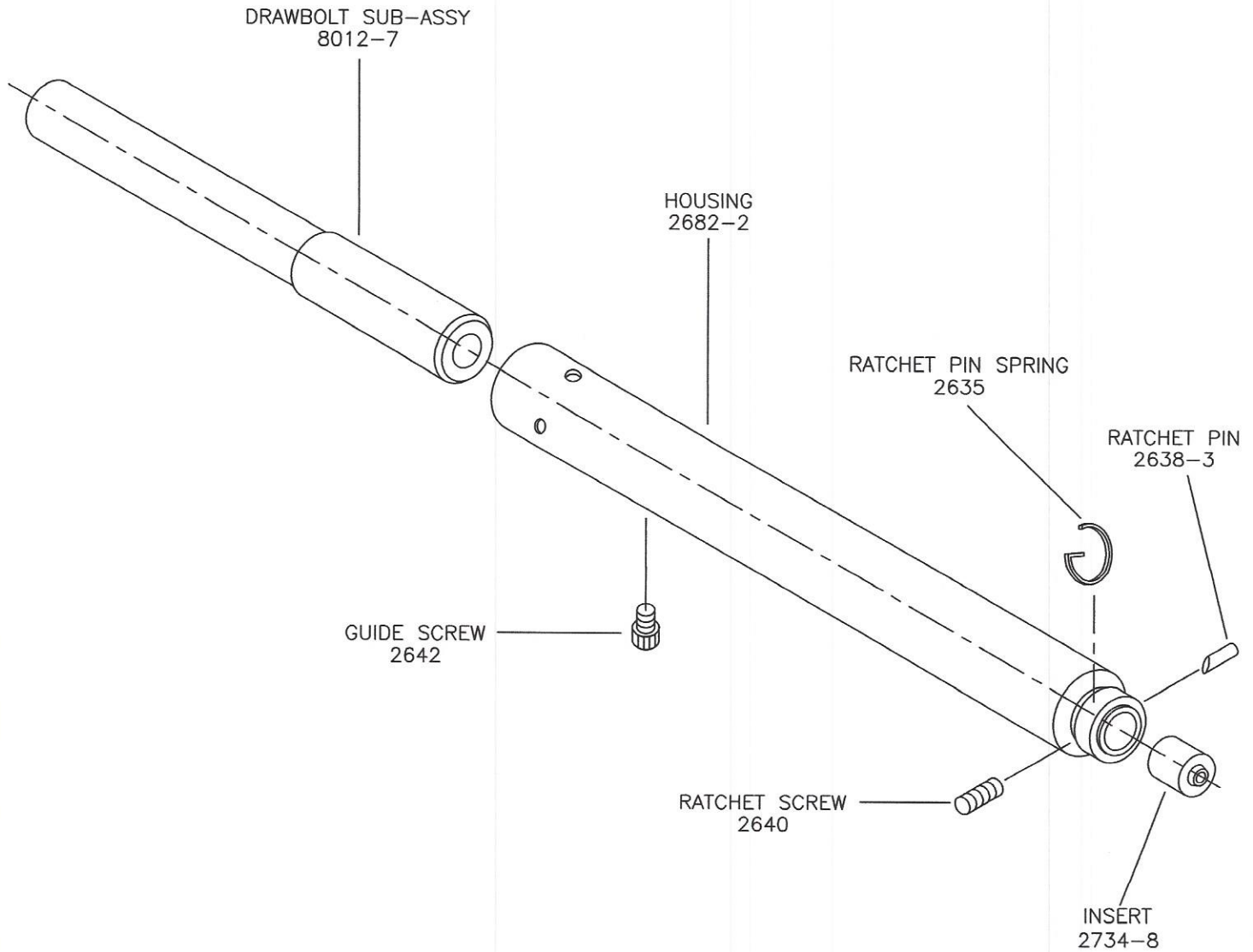


NOTES:

- 1- RATCHET SCREW GOES INTO HOLE ADJACENT TO SMALL SPRING RETAINING HOLE. THREAD SCREW INTO INSERT 1.5 TO 2 TURNS (NOT TIGHT) SO THAT SLOT IN SCREW ALLOWS SPRING TO LOCK INTO SCREW SLOT.
- 2- INSERT RATCHET PIN SPRING THROUGH HOLE IN RATCHET PIN. ORIENT PIN SO THAT ANGLE FACES FORWARD TO ALLOW MANDREL TO CAM IT OPEN.
- 3- TIGHTEN GUIDE SCREW INTO DRAWBOLT SUB-ASSEMBLY AFTER INSERTING DRAWBOLT SUB-ASSEMBLY INTO HOUSING.



FILE: C:\exploded\8840-8.dwg

CHG. LTR.	DATE	FILE NO.	SIGNED	DATE	OLYMPIC FASTENING SYSTEMS DIVISION OF GESIPA FASTENERS USA, INC P.O. BOX 5068 TRENTON, NEW JERSEY 08638	
A	4/30/98	RELEASE	APPROVED			
B	10/28/02	19051			Rivet Pulling Head	
			CHECKED			
			DRAWN			
			G.W.D.	4/30/98		
					Rv 8840-8	

NOTES:

1- DRAWBOLT MUST THREAD INTO COLLET BY HAND.

DRAWBOLT
2663

JAW FOLLOWER
2648

CHUCK JAWS
2651-7

FOLLOWER SPRING
6038

JAW RET. RING
2655

COLLET
2658

FILE: C:\exploded\8012-7.dwg

CHG. LTR.	DATE	FILE NO.	SIGNED	DATE
A	4/30/98	RELEASE	APPROVED	
B	10/28/02	19052		
			CHECKED	
			DRAWN	
			G.W.D.	4/30/98

OLYMPIC FASTENING SYSTEMS



DIVISION OF GESIPA FASTENERS USA, INC

P.O. BOX 5068
TRENTON, NEW JERSEY 08638

Drawbolt Sub-Assembly

8012-7