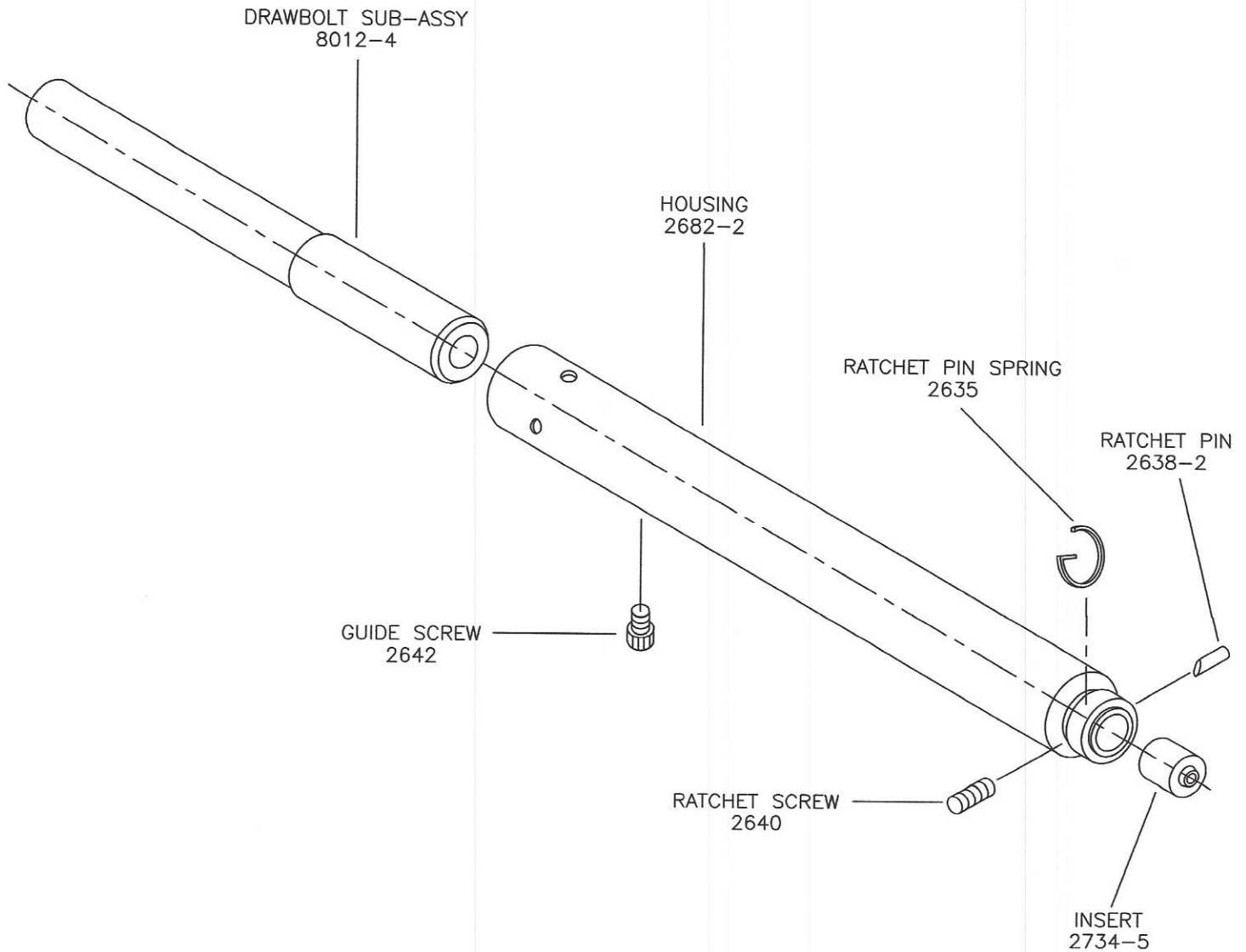


NOTES:


1- RATCHET SCREW GOES INTO HOLE ADJACENT TO SMALL SPRING RETAINING HOLE. THREAD SCREW INTO INSERT 1.5 TO 2 TURNS (NOT TIGHT) SO THAT SLOT IN SCREW ALLOWS SPRING TO LOCK INTO SCREW SLOT.

2- INSERT RATCHET PIN SPRING THROUGH HOLE IN RATCHET PIN. ORIENT PIN SO THAT ANGLE FACES FORWARD TO ALLOW MANDREL TO CAM IT OPEN.

3- TIGHTEN GUIDE SCREW INTO DRAWBOLT SUB-ASSEMBLY AFTER INSERTING DRAWBOLT SUB-ASSEMBLY INTO HOUSING.



FILE:C:\exploded\8840-5

CHG. LTR.	DATE	FILE NO.	SIGNED	DATE	<b>OLYMPIC FASTENING SYSTEMS</b> DIVISION OF GESIPA FASTENERS USA, INC  P.O. BOX 5068 TRENTON, NEW JERSEY 08638	
A	4/30/98	RELEASE	APPROVED			
B	10/28/02	19051			Rivet Pulling Head	
			CHECKED			
			DRAWN			
			G.W.D.	4/30/98		
					Rv 8840-5	

NOTES:  
1- DRAWBOLT MUST THREAD INTO COLLET BY HAND.

DRAWBOLT  
2663

JAW FOLLOWER  
2648

CHUCK JAWS  
2651-4

FOLLOWER SPRING  
6038

JAW RET. RING  
2655

COLLET  
2658

FILE: C:\exploded\8012-4.dwg

CHG. LTR.	DATE	FILE NO.	SIGNED	DATE
A	4/30/98	RELEASE	APPROVED	
B	10/28/02	19052		
			CHECKED	
			DRAWN	
			G.W.D.	4/30/98

## OLYMPIC FASTENING SYSTEMS



DIVISION OF GESIPA FASTENERS USA, INC

P.O. BOX 5068  
TRENTON, NEW JERSEY 08638

Drawbolt Sub-Assembly

8012-4